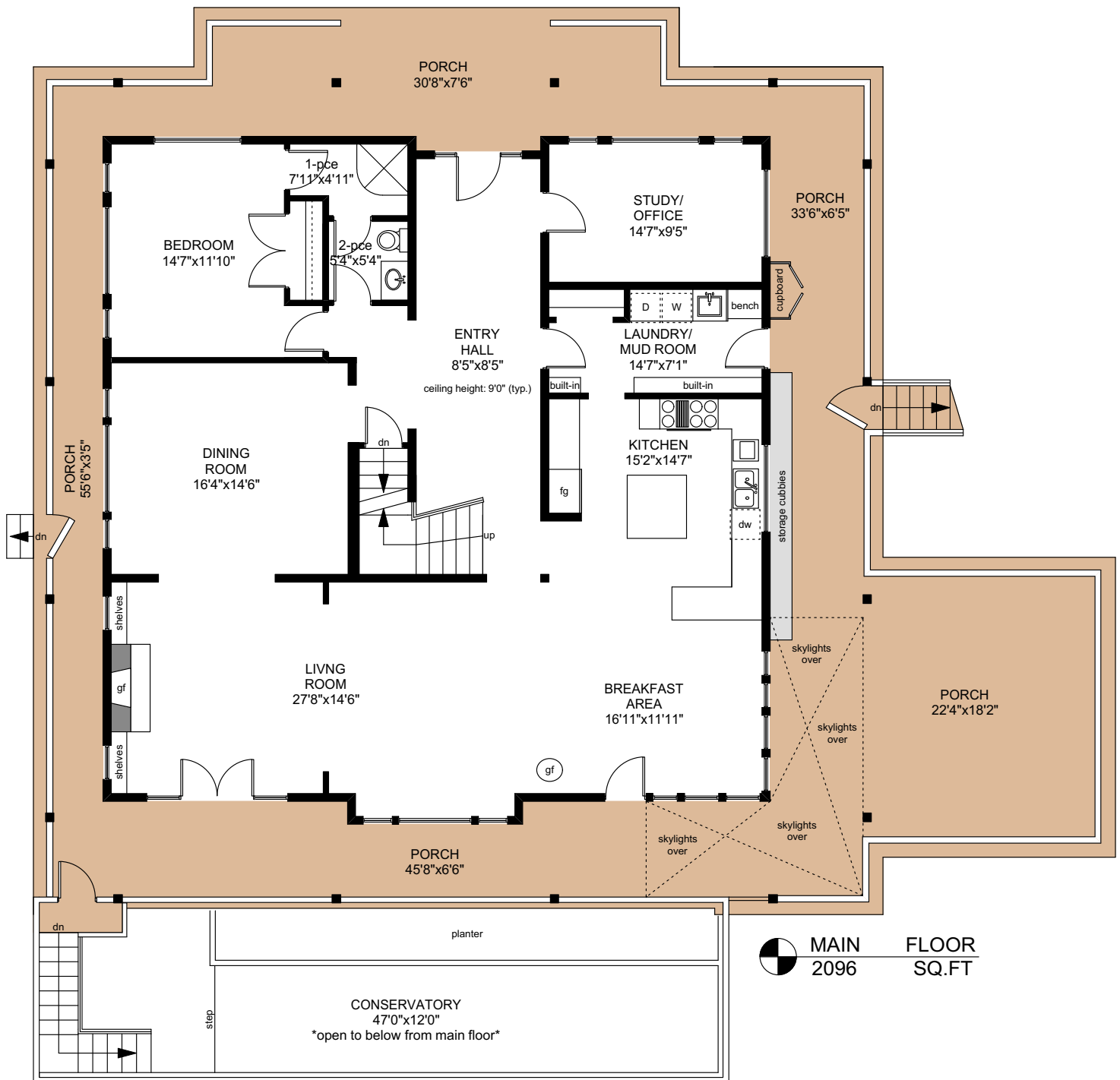
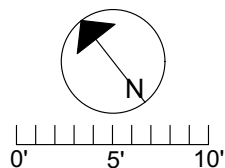


1700 NORTH END ROAD



	FINISHED SQ. FT.	UNFINISHED SQ. FT.	TOTAL SQ. FT.
MAIN	2096	0	2096
UPPER	1272	0	1272
LOWER	0	939	939
TOTAL	3368	939	4307
CONSERVATORY	0	564	564
PORCHES	0	1743	1743




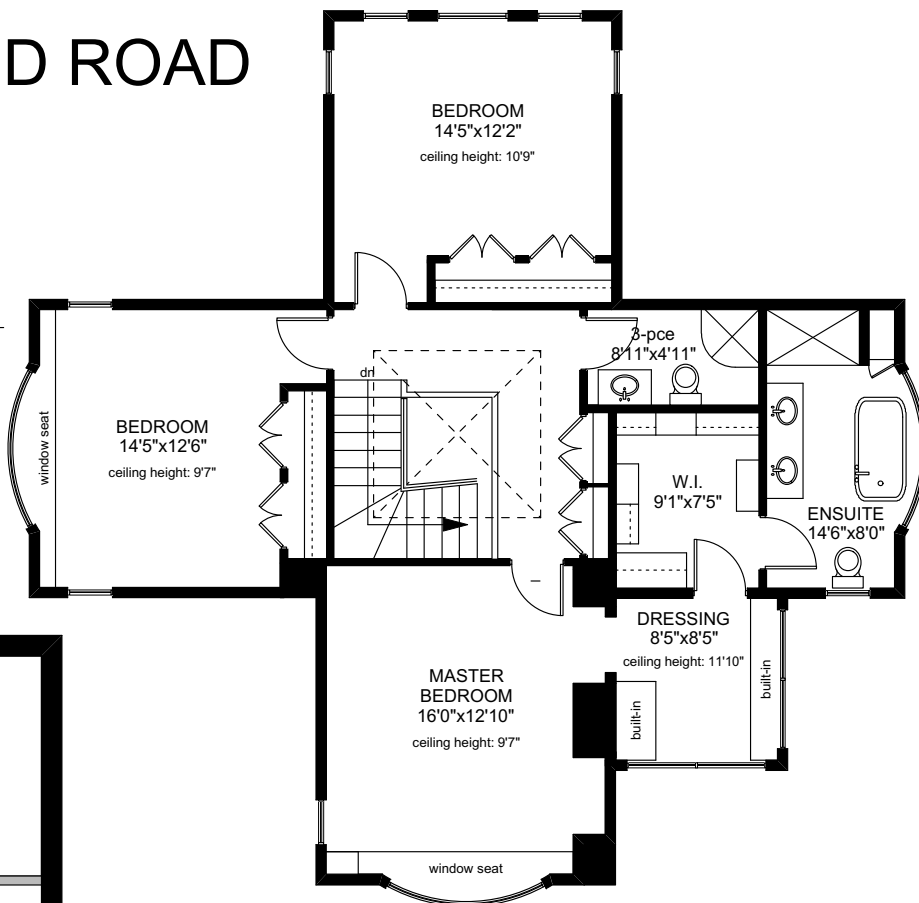
PREPARED FOR THE EXCLUSIVE USE OF
 CHRIS & DARLENE HOBBS OF
 SOTHEY'S INTERNATIONAL REALTY CANADA

MEASURED ON: 05/23/20
 DRAWING FILE: 0286

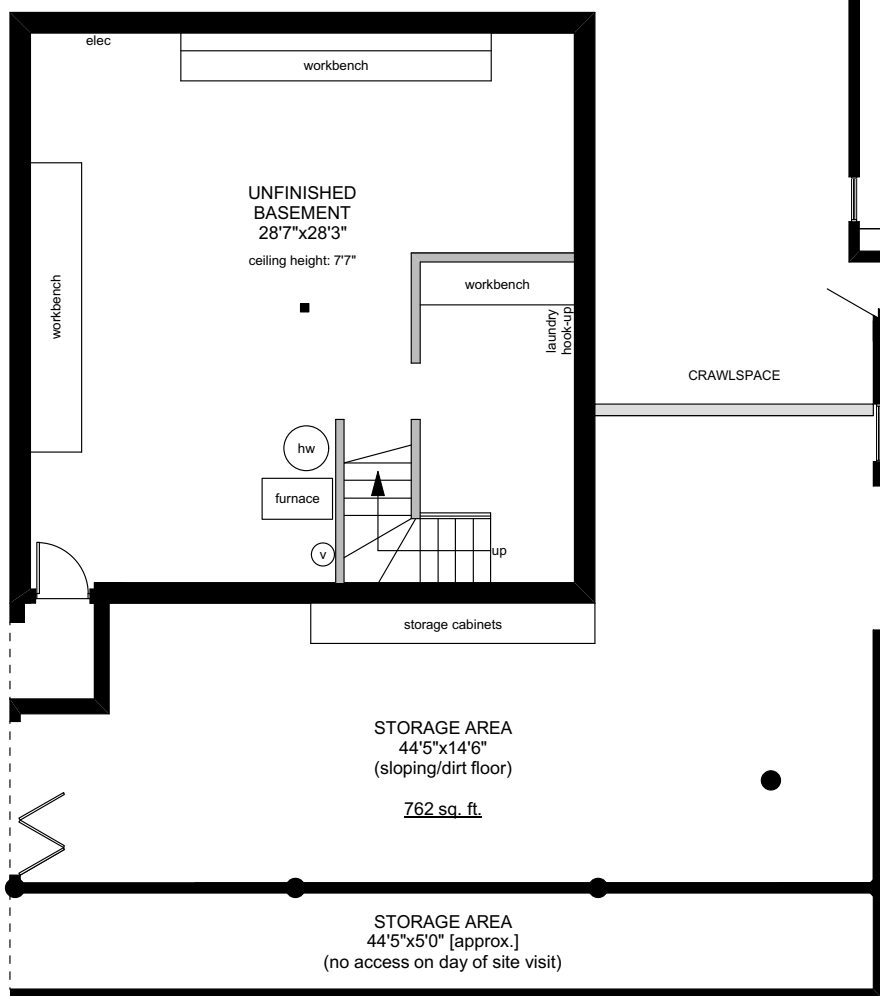
NOTE: This floor plan is provided by Chris & Darlene Hobbs of Sotheby's International Realty Canada as a convenient reference only, and is not to be relied upon as accurate. Prospective Buyers must satisfy themselves not only of the actual measurements, but also to the status of any finished space shown on this floor plan, specifically in relation to minimum ceiling height for habitable rooms required by the BC Building Code, allowable finished floor area in relation to current zoning, and determination if space was developed with necessary municipal permits.

1700 NORTH END ROAD

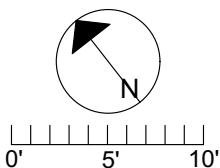
 **UPPER FLOOR**
1272 SQ.FT



 **LOWER FLOOR**
939 SQ.FT



	FINISHED SQ. FT.	UNFINISHED SQ. FT.	TOTAL SQ. FT.
MAIN	2096	0	2096
UPPER	1272	0	1272
LOWER	0	939	939
TOTAL	3368	939	4307
CONSERVATORY	0	564	564
PORCHES	0	1743	1743



PREPARED FOR THE EXCLUSIVE USE OF
CHRIS & DARLENE HOBBS OF
SOTHEBY'S INTERNATIONAL REALTY CANADA

MEASURED ON: 05/23/20
DRAWING FILE: 0286

NOTE: This floor plan is provided by Chris & Darlene Hobbs of Sotheby's International Realty Canada as a convenient reference only, and is not to be relied upon as accurate. Prospective Buyers must satisfy themselves not only of the actual measurements, but also to the status of any finished space shown on this floor plan, specifically in relation to minimum ceiling height for habitable rooms required by the BC Building Code, allowable finished floor area in relation to current zoning, and determination if space was developed with necessary municipal permits.