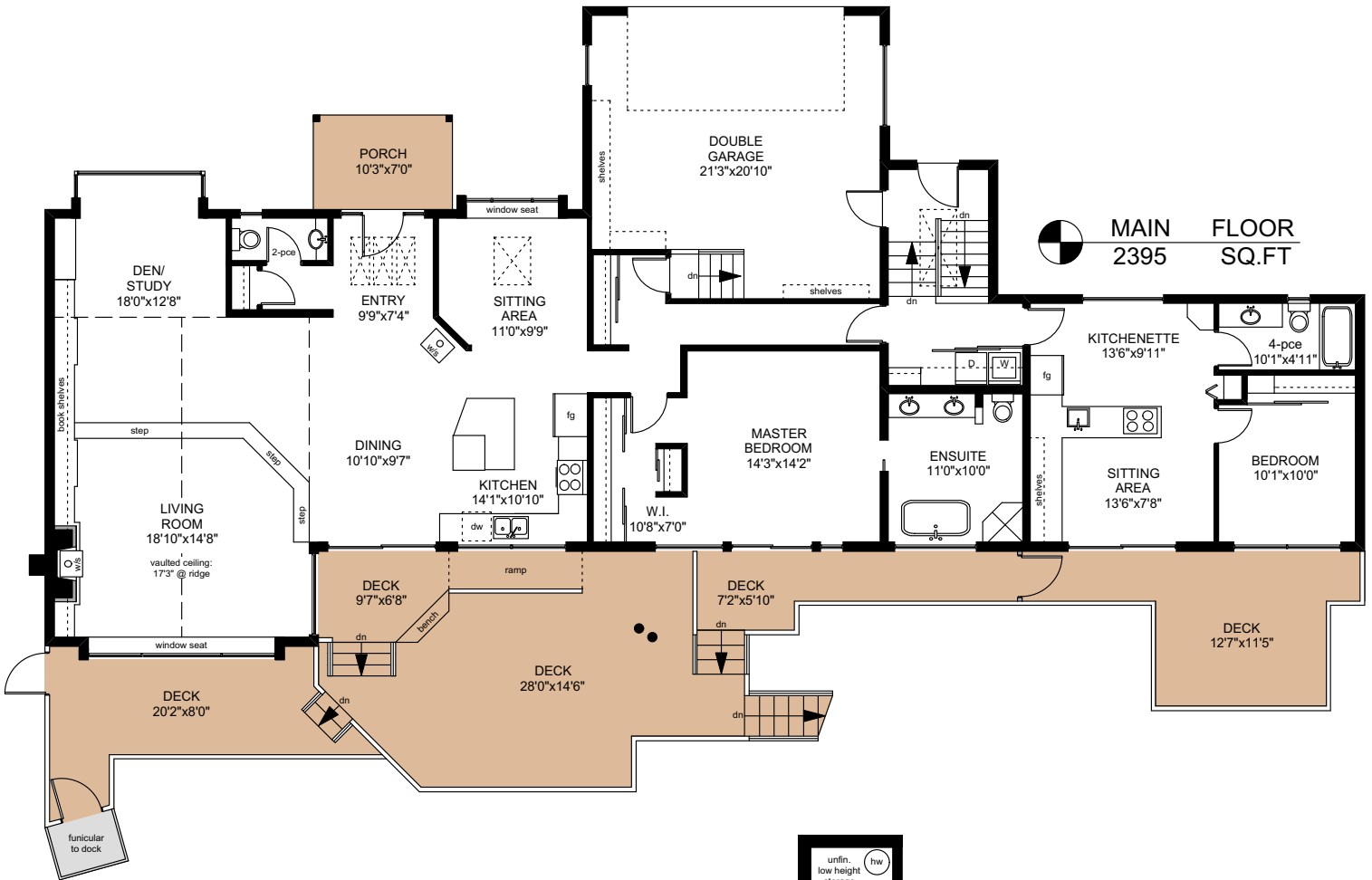
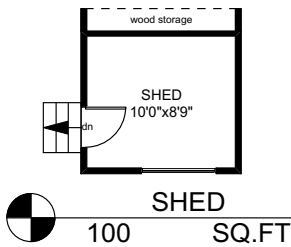


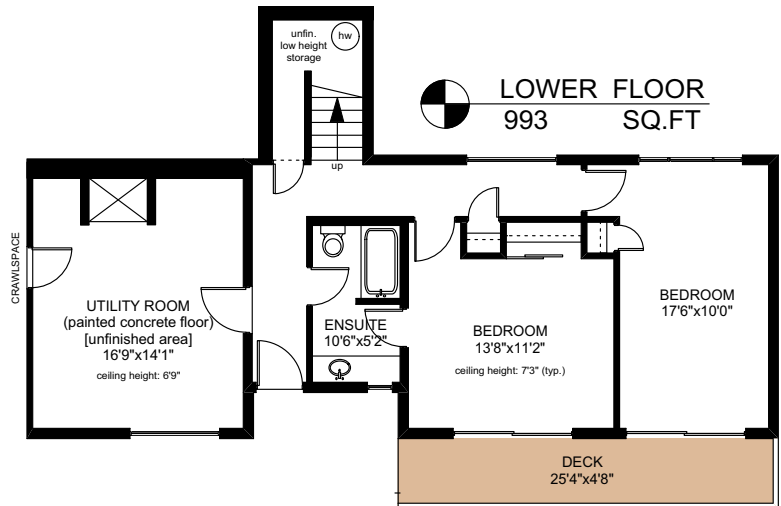
177 MOUNTAIN PARK DRIVE



MAIN FLOOR
2395 SQ. FT.



SHED
100 SQ. FT.



LOWER FLOOR
993 SQ. FT.

	FINISHED SQ. FT.	UNFINISHED SQ. FT.	TOTAL SQ. FT.
MAIN	2395	0	2395
LOWER	658	335	993
TOTAL	3053	335	3388
GARAGE	0	456	456
DECKS	0	1064	1064
PORCH	0	71	71
SHED	0	100	100



0' 5' 10'

PREPARED FOR THE EXCLUSIVE USE OF
CHRIS & DARLENE HOBBS OF
SOTHEBY'S INTERNATIONAL REALTY CANADA

MEASURED ON: 02/29/20
DRAWING FILE: 0280

NOTE: This floor plan is provided by Chris & Darlene Hobbs of Sotheby's International Realty Canada as a convenient reference only, and is not to be relied upon as accurate. Prospective Buyers must satisfy themselves not only of the actual measurements, but also to the status of any finished space shown on this floor plan, specifically in relation to minimum ceiling height for habitable rooms required by the BC Building Code, allowable finished floor area in relation to current zoning, and determination if space was developed with necessary municipal permits.