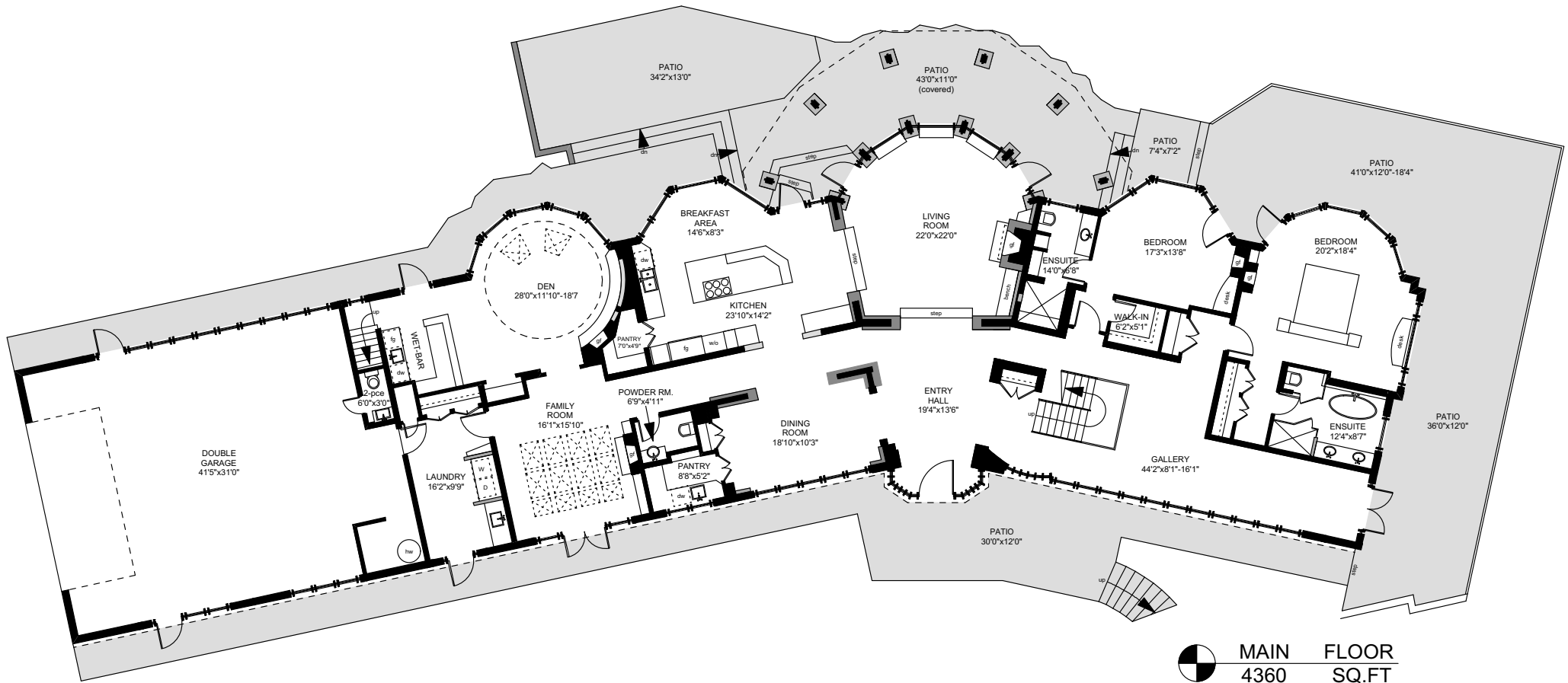

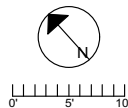


266 LITTLE MOUNTAIN ROAD




MAIN FLOOR
 4360 SQ.FT

	FINISHED SQ. FT.	UNFINISHED SQ. FT.	TOTAL SQ. FT.
MAIN	4360	0	4360
UPPER	3309	0	3309
TOTAL	7669	0	7669
GARAGE	0	1347	1347
BALCONIES	0	546	546
PATIOS	0	2686	2686
STUDIO	603	0	603

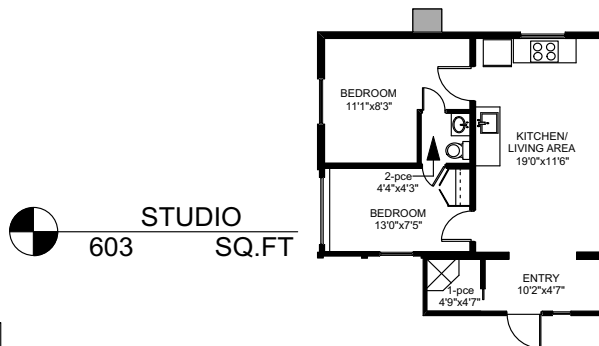
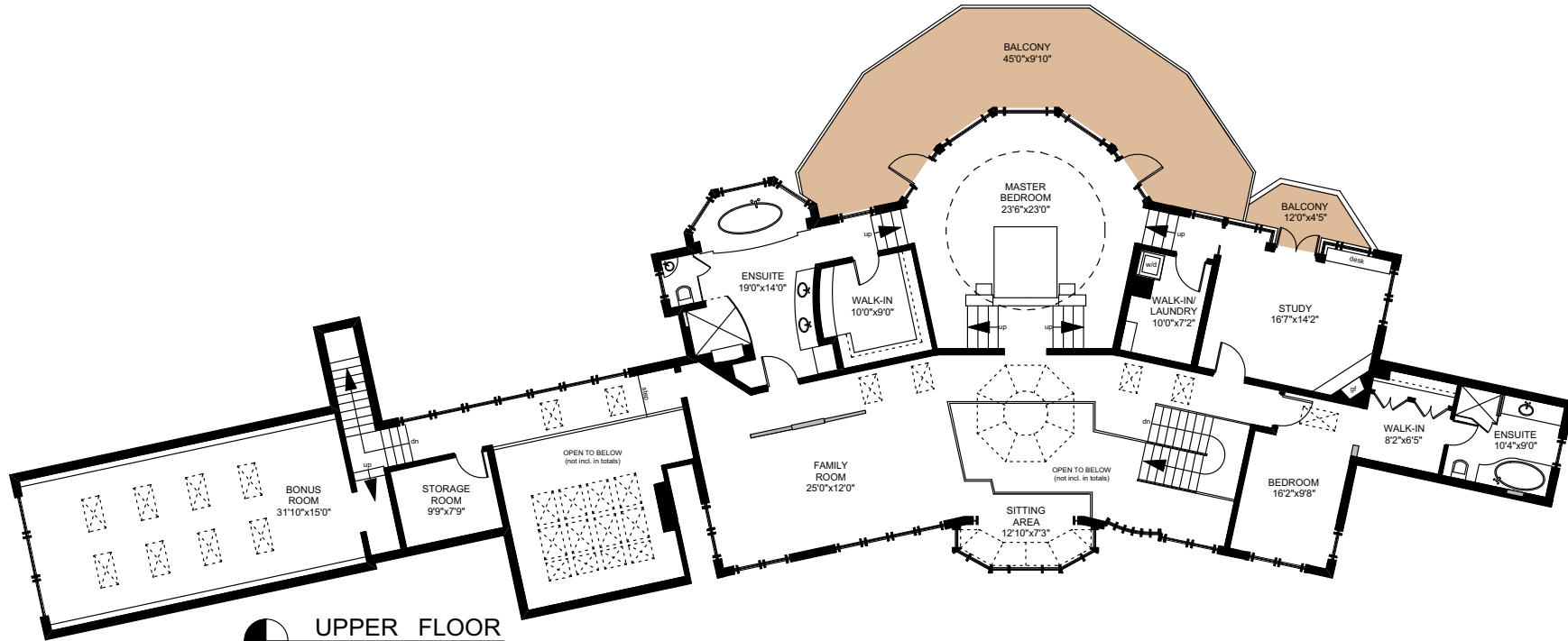


PREPARED FOR THE EXCLUSIVE USE OF
 CHRIS & DARLENE HOBBS OF
 SOTHEBY'S INTERNATIONAL REALTY CANADA

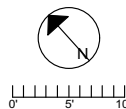
MEASURED ON: 03/05/20
 DRAWING FILE: 0281

NOTE: This floor plan is provided by Chris & Darlene Hobbs of Sotheby's International Realty Canada as a convenient reference only, and is not to be relied upon as accurate. Prospective Buyers must satisfy themselves not only of the actual measurements, but also to the status of any finished space shown on this floor plan, specifically in relation to minimum ceiling height for habitable rooms required by the BC Building Code, allowable finished floor area in relation to current zoning, and determination if space was developed with necessary municipal permits.

266 LITTLE MOUNTAIN ROAD



	FINISHED SQ. FT.	UNFINISHED SQ. FT.	TOTAL SQ. FT.
MAIN	4360	0	4360
UPPER	3309	0	3309
TOTAL	7669	0	7669
GARAGE	0	1347	1347
BALCONIES	0	546	546
PATIOS	0	2686	2686
STUDIO	603	0	603



PREPARED FOR THE EXCLUSIVE USE OF
CHRIS & DARLENE HOBBS OF
SOTHEBY'S INTERNATIONAL REALTY CANADA

MEASURED ON: 03/05/20
DRAWING FILE: 0281

NOTE: This floor plan is provided by Chris & Darlene Hobbs of Sotheby's International Realty Canada as a convenient reference only, and is not to be relied upon as accurate. Prospective Buyers must satisfy themselves not only of the actual measurements, but also to the status of any finished space shown on this floor plan, specifically in relation to minimum ceiling height for habitable rooms required by the BC Building Code, allowable finished floor area in relation to current zoning, and determination if space was developed with necessary municipal permits.