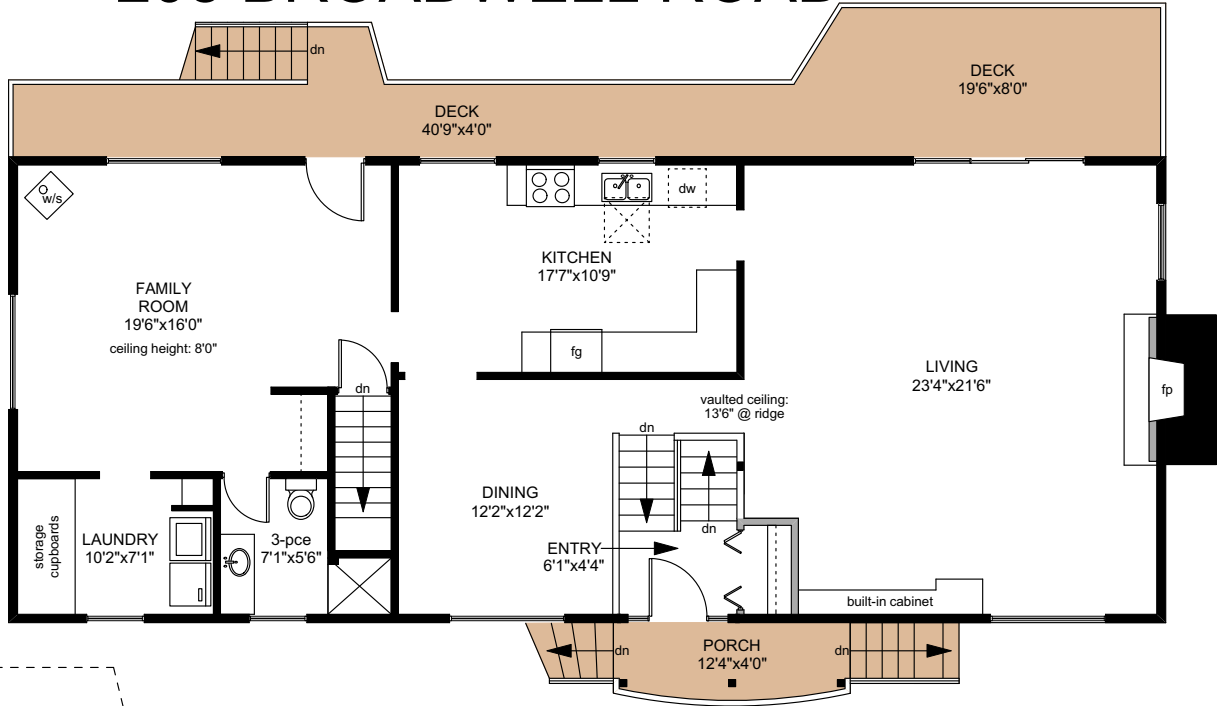
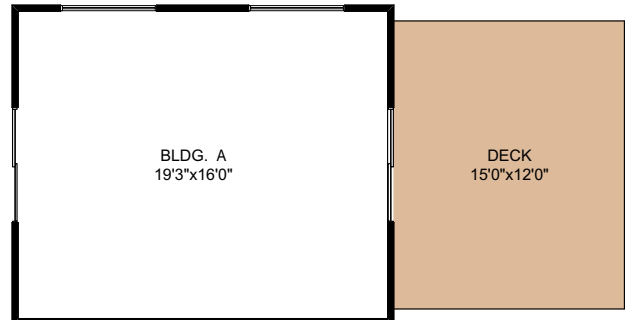
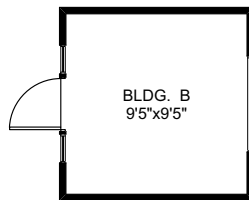
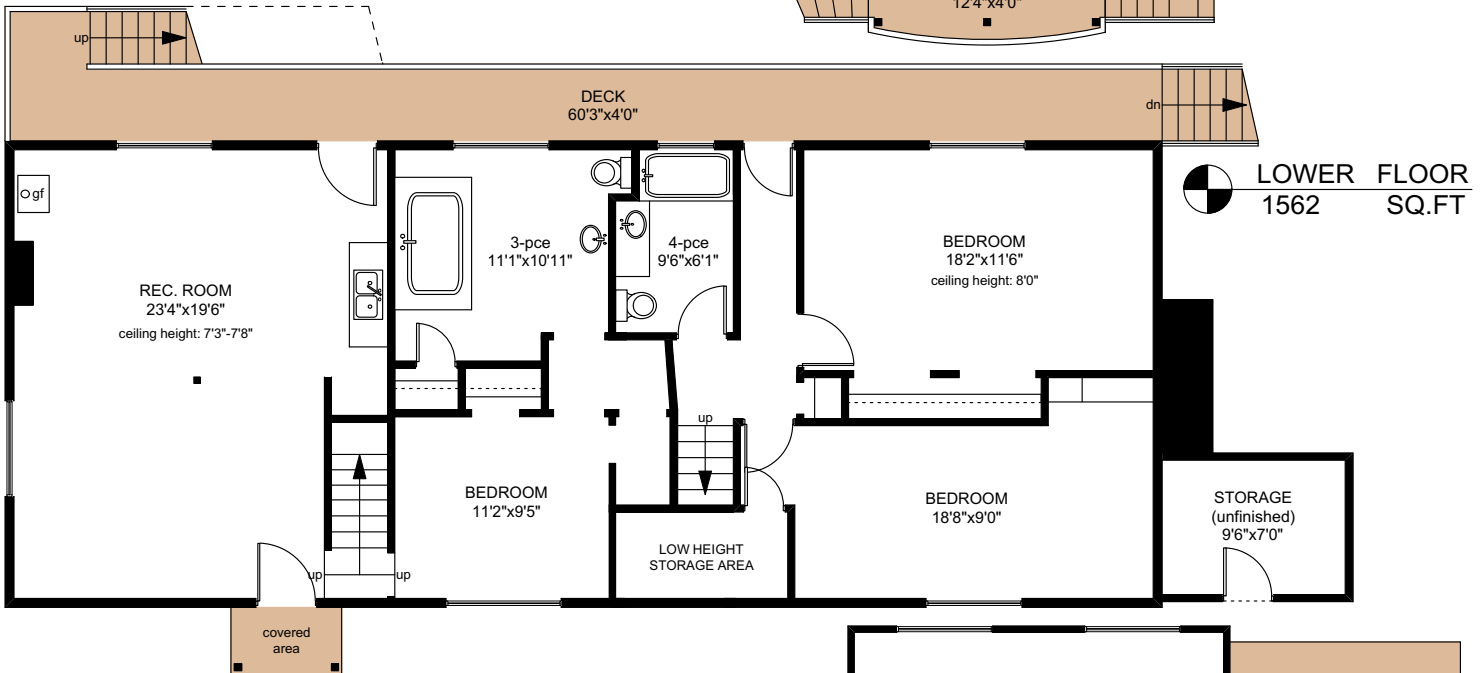


208 BROADWELL ROAD

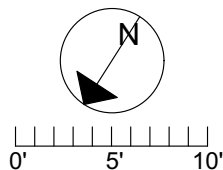
UPPER FLOOR
1485 SQ.FT



LOWER FLOOR
1562 SQ.FT



	FINISHED SQ. FT.	UNFINISHED SQ. FT.	TOTAL SQ. FT.
UPPER	1485	0	1485
LOWER	1485	77	1562
TOTAL	2970	77	3047
DECKS	0	760	760
PORCH	0	50	50
BLDG. A	0	332	332
BLDG. B	0	102	102



PREPARED FOR THE EXCLUSIVE USE OF
CHRIS & DARLENE HOBBS OF
SOTHEY'S INTERNATIONAL REALTY CANADA

MEASURED ON: 01/07/20
DRAWING FILE: 0275

NOTE: This floor plan is provided by Chris & Darlene Hobbs of Sotheby's International Realty Canada as a convenient reference only, and is not to be relied upon as accurate. Prospective Buyers must satisfy themselves not only of the actual measurements, but also to the status of any finished space shown on this floor plan, specifically in relation to minimum ceiling height for habitable rooms required by the BC Building Code, allowable finished floor area in relation to current zoning, and determination if space was developed with necessary municipal permits.