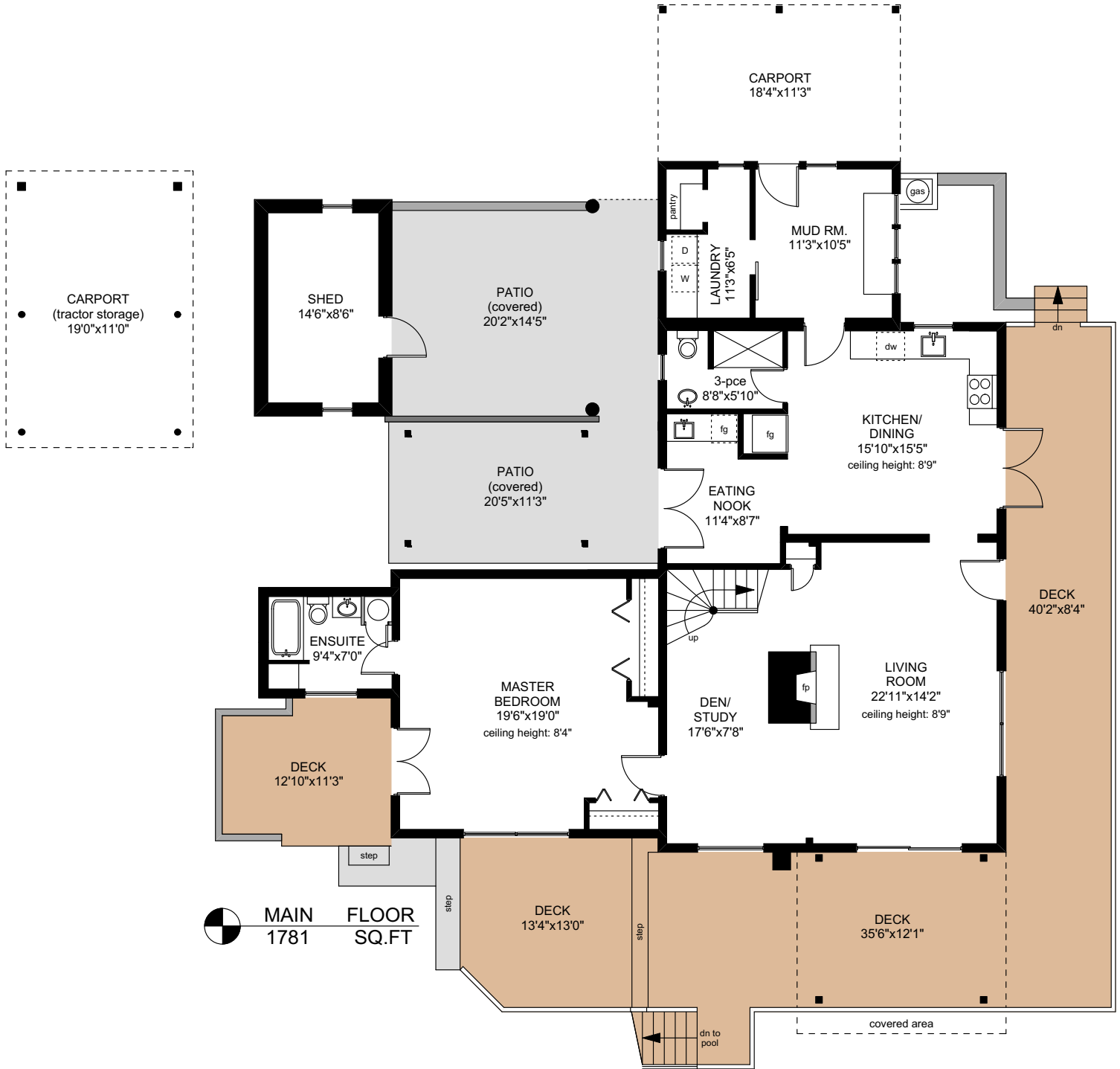

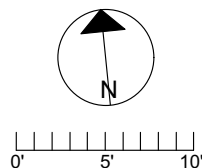


551/555/559 BLACKBURN ROAD




MAIN FLOOR
1781 SQ.FT

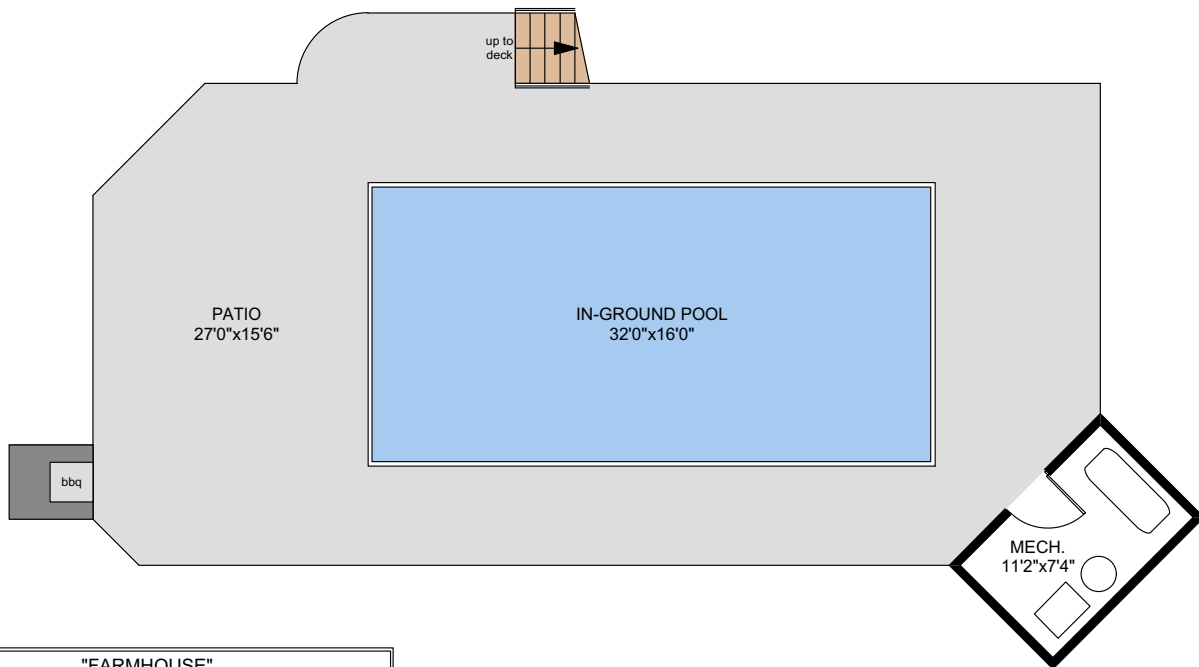
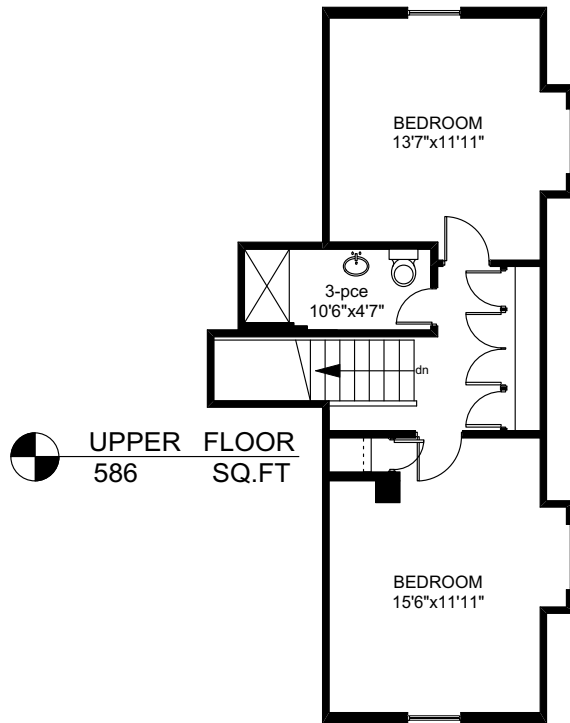
"FARMHOUSE"			
	FINISHED SQ. FT.	UNFINISHED SQ. FT.	TOTAL SQ. FT.
MAIN	1781	0	1781
UPPER	586	0	586
TOTAL	2538	0	2538
CARPORTS	0	418	418
DECKS	0	1096	1096
PATIOS	0	965	965
SHEDS	0	270	270



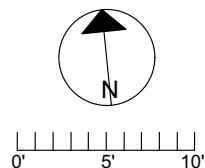
PREPARED FOR THE EXCLUSIVE USE OF
 CHRIS & DARLENE HOBBS OF
 SOTHEBY'S INTERNATIONAL REALTY CANADA
 MEASURED ON: 01/12/19
 DRAWING FILE: 0277

NOTE: This floor plan is provided by Chris & Darlene Hobbs of Sotheby's International Realty Canada as a convenient reference only, and is not to be relied upon as accurate. Prospective Buyers must satisfy themselves not only of the actual measurements, but also to the status of any finished space shown on this floor plan, specifically in relation to minimum ceiling height for habitable rooms required by the BC Building Code, allowable finished floor area in relation to current zoning, and determination if space was developed with necessary municipal permits.

551/555/559 BLACKBURN ROAD



"FARMHOUSE"			
	FINISHED SQ. FT.	UNFINISHED SQ. FT.	TOTAL SQ. FT.
MAIN	1781	0	1781
UPPER	586	0	586
TOTAL	2538	0	2538
CARPORTS	0	418	418
DECKS	0	1096	1096
PATIOS	0	965	965
SHEDS	0	270	270

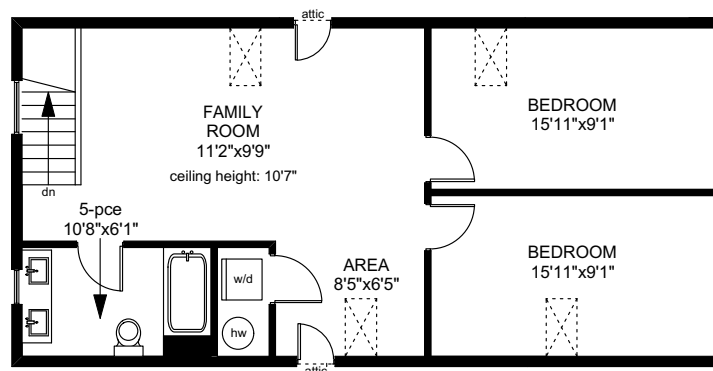
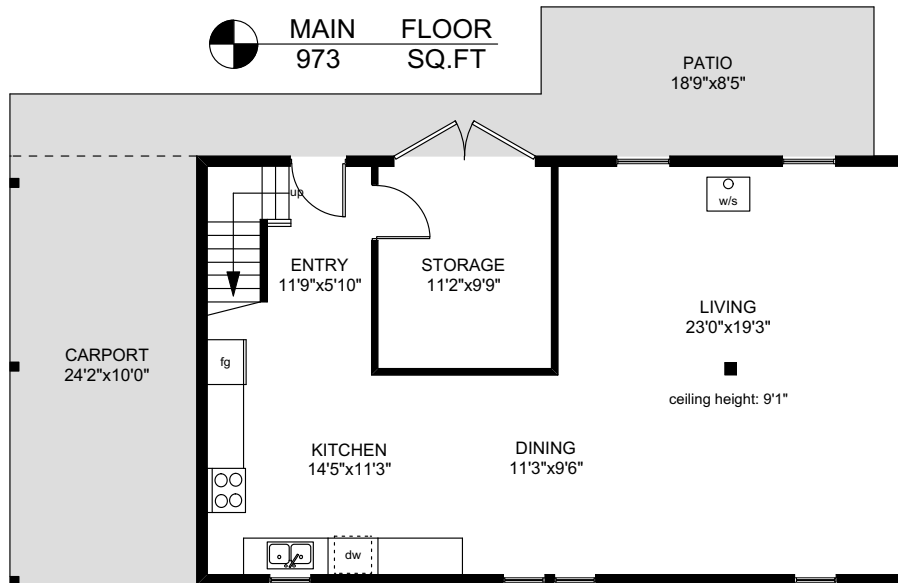


PREPARED FOR THE EXCLUSIVE USE OF
CHRIS & DARLENE HOBBS OF
SOTHEBY'S INTERNATIONAL REALTY CANADA

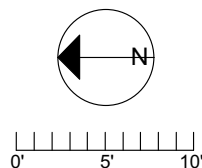
MEASURED ON: 01/12/19
DRAWING FILE: 0277

NOTE: This floor plan is provided by Chris & Darlene Hobbs of Sotheby's International Realty Canada as a convenient reference only, and is not to be relied upon as accurate. Prospective Buyers must satisfy themselves not only of the actual measurements, but also to the status of any finished space shown on this floor plan, specifically in relation to minimum ceiling height for habitable rooms required by the BC Building Code, allowable finished floor area in relation to current zoning, and determination if space was developed with necessary municipal permits.

551/555/559 BLACKBURN ROAD



"BARN"			
	FINISHED SQ. FT.	UNFINISHED SQ. FT.	TOTAL SQ. FT.
MAIN	973	0	973
UPPER	792	0	792
TOTAL	1765	0	1765
CARPORT	0	243	243
PATIO	0	158	158

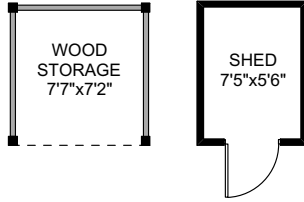


PREPARED FOR THE EXCLUSIVE USE OF
CHRIS & DARLENE HOBBS OF
SOTHEY'S INTERNATIONAL REALTY CANADA

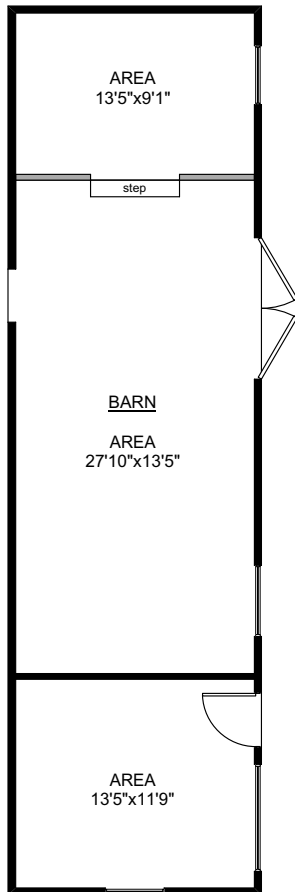
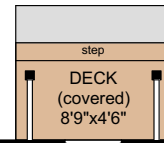
MEASURED ON: 01/12/19
DRAWING FILE: 0277

NOTE: This floor plan is provided by Chris & Darlene Hobbs of Sotheby's International Realty Canada as a convenient reference only, and is not to be relied upon as accurate. Prospective Buyers must satisfy themselves not only of the actual measurements, but also to the status of any finished space shown on this floor plan, specifically in relation to minimum ceiling height for habitable rooms required by the BC Building Code, allowable finished floor area in relation to current zoning, and determination if space was developed with necessary municipal permits.

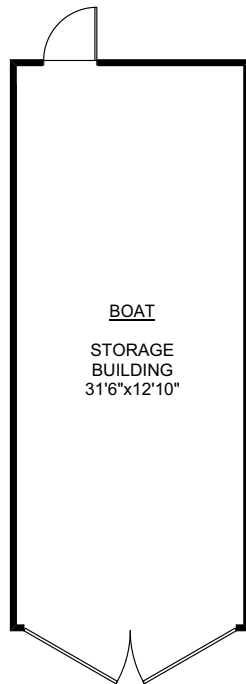
551/555/559 BLACKBURN ROAD



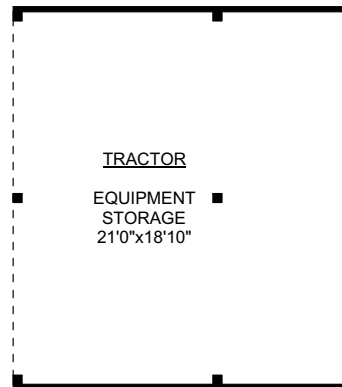
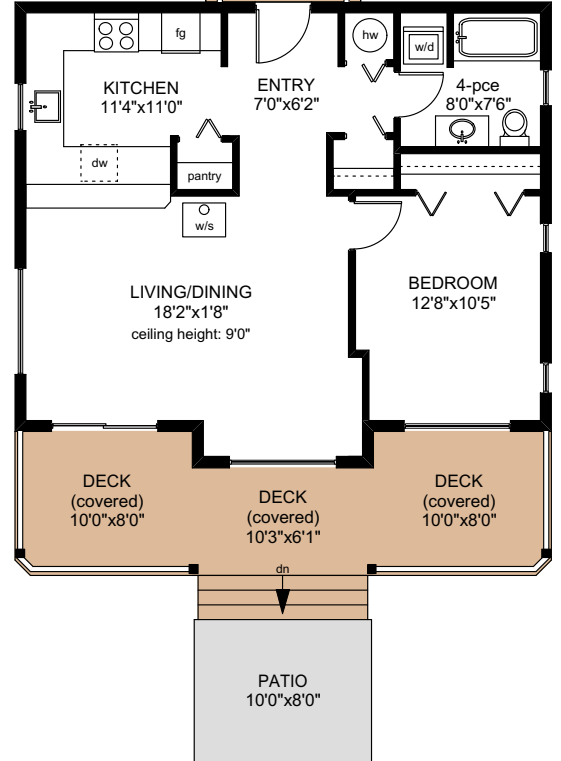
MAIN FLOOR
753 SQ.FT



BARN
717 SQ.FT

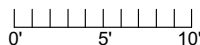
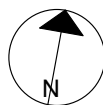


BOAT
436 SQ.FT



TRACTOR
396 SQ.FT

"HENHOUSE"			
	FINISHED SQ. FT.	UNFINISHED SQ. FT.	TOTAL SQ. FT.
MAIN	753	0	753
TOTAL	753	0	753
DECKS	0	263	263
PATIO	0	80	80
BARN	0	717	717
TRACTOR	0	396	396
BOAT STOR.	0	436	436



PREPARED FOR THE EXCLUSIVE USE OF
CHRIS & DARLENE HOBBS OF
SOTHEY'S INTERNATIONAL REALTY CANADA

MEASURED ON: 01/12/19
DRAWING FILE: 0277

NOTE: This floor plan is provided by Chris & Darlene Hobbs of Sotheby's International Realty Canada as a convenient reference only, and is not to be relied upon as accurate. Prospective Buyers must satisfy themselves not only of the actual measurements, but also to the status of any finished space shown on this floor plan, specifically in relation to minimum ceiling height for habitable rooms required by the BC Building Code, allowable finished floor area in relation to current zoning, and determination if space was developed with necessary municipal permits.