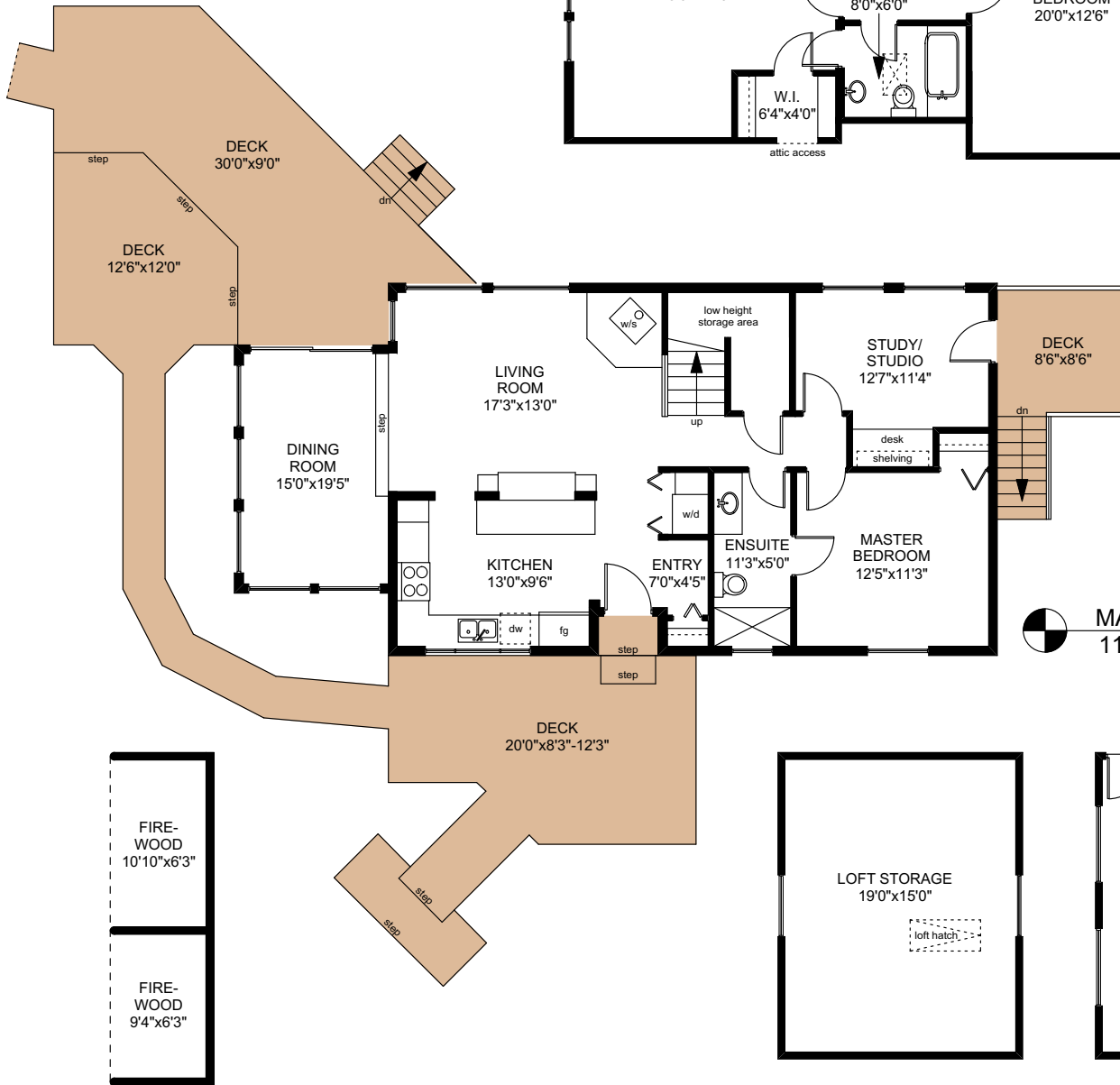
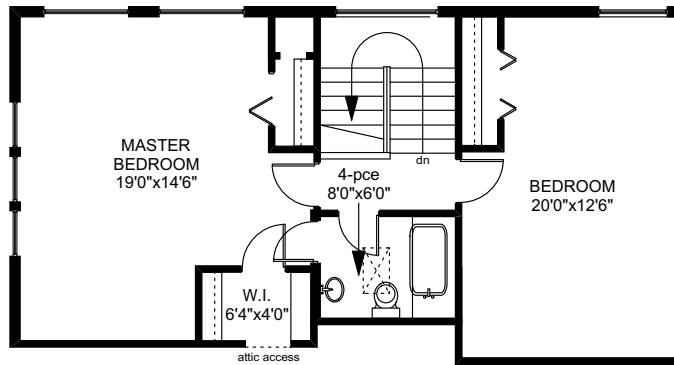
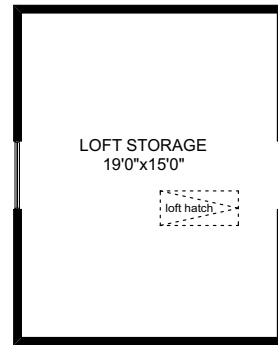
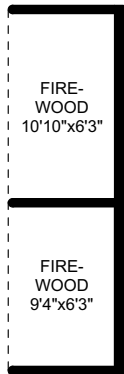


130 LAWNHILL DRIVE

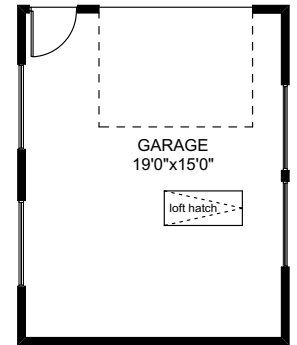
UPPER FLOOR
793 SQ.FT



MAIN FLOOR
1108 SQ.FT

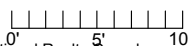


LOFT
317 SQ.FT



GARAGE
317 SQ.FT

	FINISHED SQ. FT.	UNFINISHED SQ. FT.	TOTAL SQ. FT.
MAIN	1108	0	1108
UPPER	793	0	793
TOTAL	1901	0	1901
DECKS	0	865	865
SHED	0	140	140
GARAGE	0	317	317
LOFT	0	317	317



PREPARED FOR THE EXCLUSIVE USE OF
CHRIS & DARLENE HOBBS OF
SOTHEBY'S INTERNATIONAL REALTY CANADA

MEASURED ON: 02/11/20
DRAWING FILE: 0279

NOTE: This floor plan is provided by Chris & Darlene Hobbs of Sotheby's International Realty Canada as a convenient reference only, and is not to be relied upon as accurate. Prospective Buyers must satisfy themselves not only of the actual measurements, but also to the status of any finished space shown on this floor plan, specifically in relation to minimum ceiling height for habitable rooms required by the BC Building Code, allowable finished floor area in relation to current zoning, and determination if space was developed with necessary municipal permits.