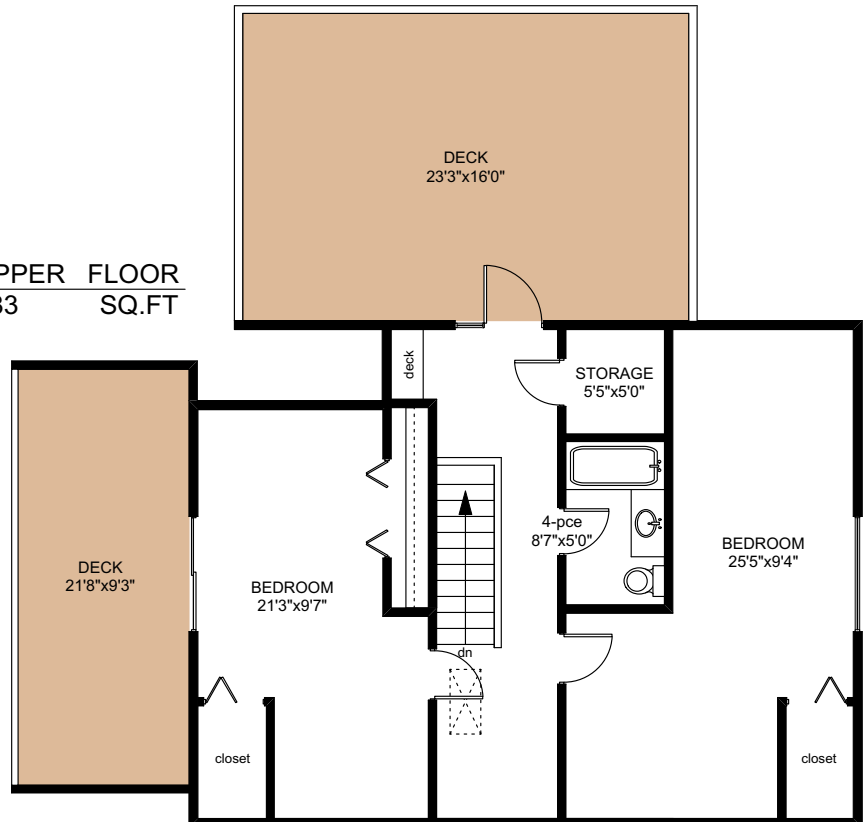
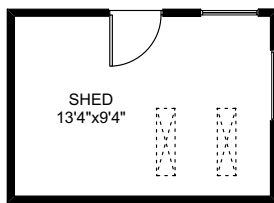


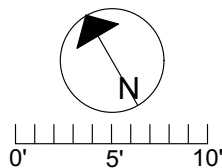
# 261 MOBRAE AVE.



**UPPER FLOOR**  
883 SQ. FT.



	FINISHED SQ. FT.	UNFINISHED SQ. FT.	TOTAL SQ. FT.
MAIN	908	134	1042
UPPER	883	0	883
<b>TOTAL</b>	<b>1791</b>	<b>134</b>	<b>1925</b>
CARPORT	0	421	421
DECKS	0	623	623
PORCH	0	227	227
PATIO	0	151	151
SHED	0	143	143



PREPARED FOR THE EXCLUSIVE USE OF  
CHRIS & DARLENE HOBBS OF  
SOTHEBY'S INTERNATIONAL REALTY CANADA

MEASURED ON: 01/07/19  
DRAWING FILE: 0274

NOTE: This floor plan is provided by Chris & Darlene Hobbs of Sotheby's International Realty Canada as a convenient reference only, and is not to be relied upon as accurate. Prospective Buyers must satisfy themselves not only of the actual measurements, but also to the status of any finished space shown on this floor plan, specifically in relation to minimum ceiling height for habitable rooms required by the BC Building Code, allowable finished floor area in relation to current zoning, and determination if space was developed with necessary municipal permits.