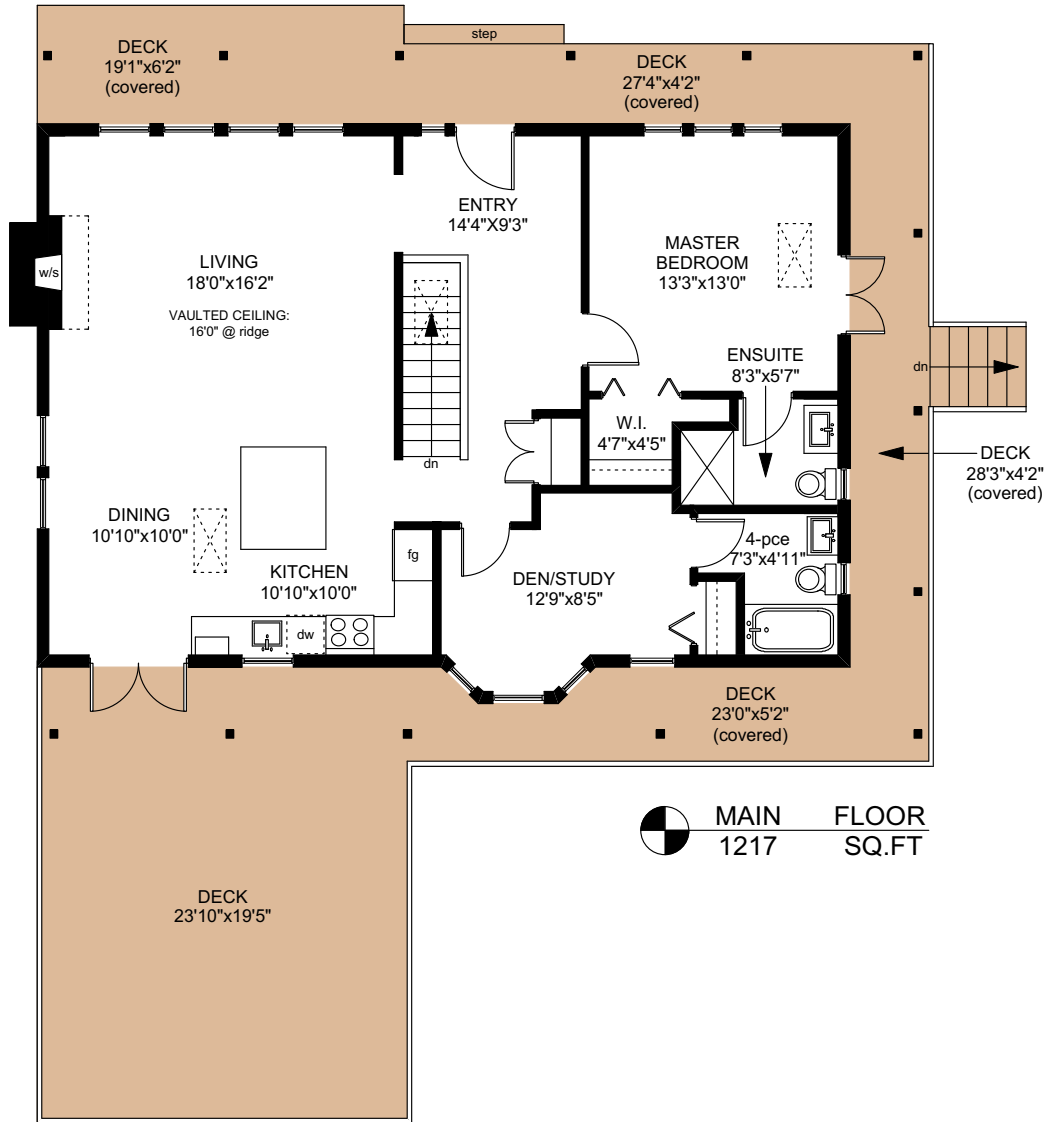
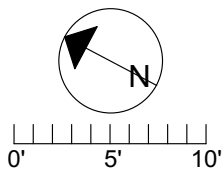


# 611 CRANBERRY ROAD



	FINISHED SQ. FT.	UNFINISHED SQ. FT.	TOTAL SQ. FT.
MAIN	1217	0	1217
LOWER	1205	0	1205
TOTAL	2422	0	2422
DECKS	0	1105	1105
GARAGE	192	730	922
DECK	0	37	37

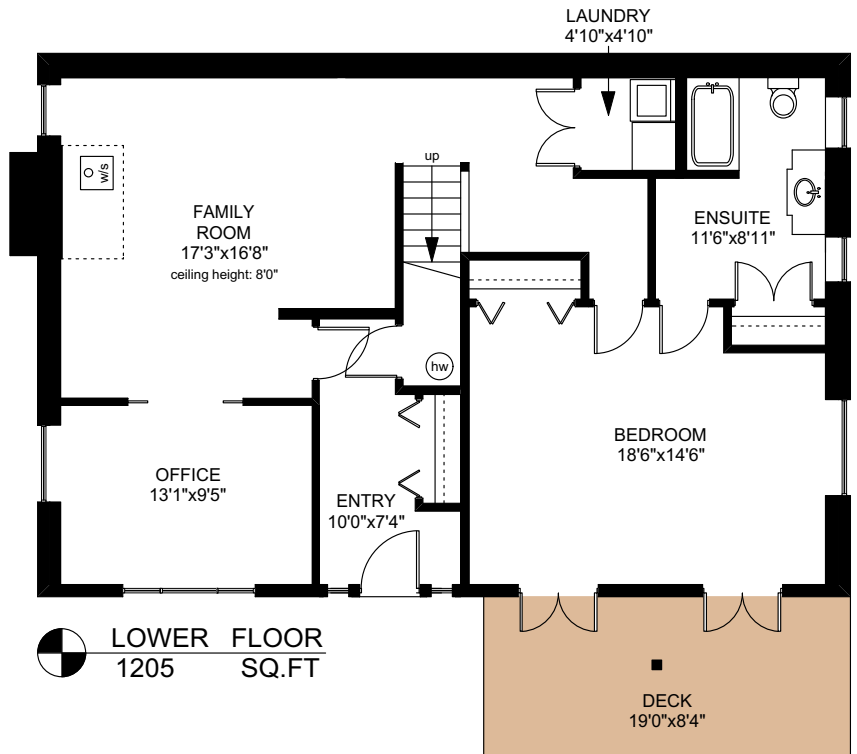
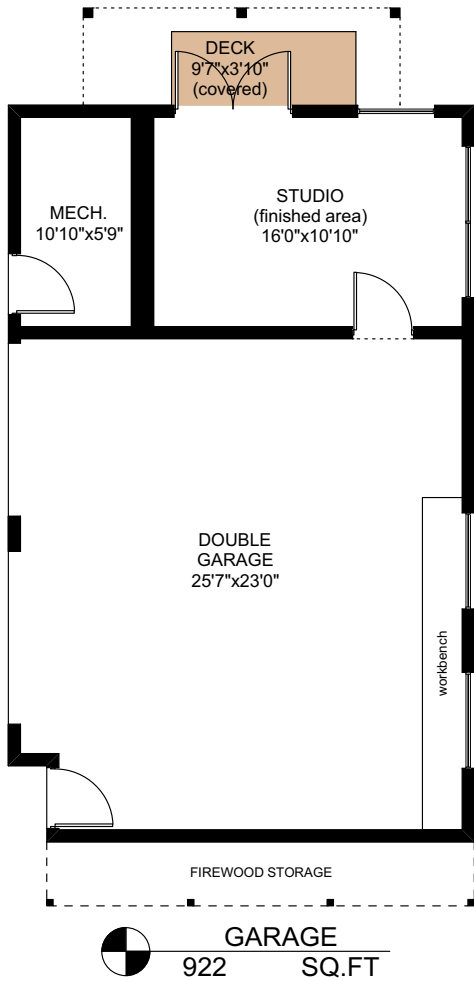


PREPARED FOR THE EXCLUSIVE USE OF  
CHRIS & DARLENE HOBBS OF  
SOTHEBY'S INTERNATIONAL REALTY CANADA

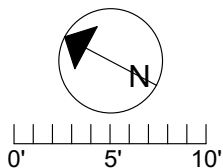
MEASURED ON: 11/16/19  
DRAWING FILE: 0272

NOTE: This floor plan is provided by Chris & Darlene Hobbs of Sotheby's International Realty Canada as a convenient reference only, and is not to be relied upon as accurate. Prospective Buyers must satisfy themselves not only of the actual measurements, but also to the status of any finished space shown on this floor plan, specifically in relation to minimum ceiling height for habitable rooms required by the BC Building Code, allowable finished floor area in relation to current zoning, and determination if space was developed with necessary municipal permits.

# 611 CRANBERRY ROAD



	FINISHED SQ. FT.	UNFINISHED SQ. FT.	TOTAL SQ. FT.
MAIN	1217	0	1217
LOWER	1205	0	1205
TOTAL	2422	0	2422
DECKS	0	1105	1105
GARAGE	192	730	922
DECK	0	37	37



PREPARED FOR THE EXCLUSIVE USE OF  
CHRIS & DARLENE HOBBS OF  
SOTHEBY'S INTERNATIONAL REALTY CANADA

MEASURED ON: 11/16/19  
DRAWING FILE: 0272

NOTE: This floor plan is provided by Chris & Darlene Hobbs of Sotheby's International Realty Canada as a convenient reference only, and is not to be relied upon as accurate. Prospective Buyers must satisfy themselves not only of the actual measurements, but also to the status of any finished space shown on this floor plan, specifically in relation to minimum ceiling height for habitable rooms required by the BC Building Code, allowable finished floor area in relation to current zoning, and determination if space was developed with necessary municipal permits.