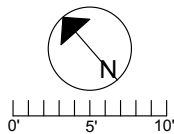



197 PRINGLE FARM ROAD



	FINISHED SQ. FT.	UNFINISHED SQ. FT.	TOTAL SQ. FT.
MAIN	3318	0	3318
UPPER	966	0	966
LOWER	0	2118	2118
TOTAL	4284	2118	6402
GARAGE	0	881	881
PORCHES	0	1375	1375
PATIOS	0	728	728
BALCONY	0	89	89
G-HOUSE	0	351	351



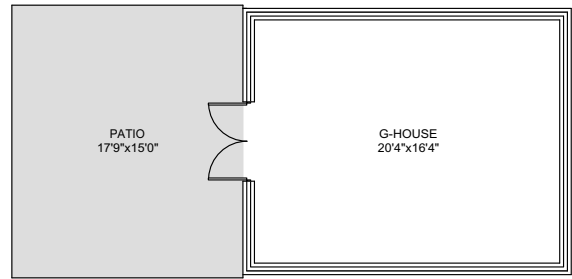
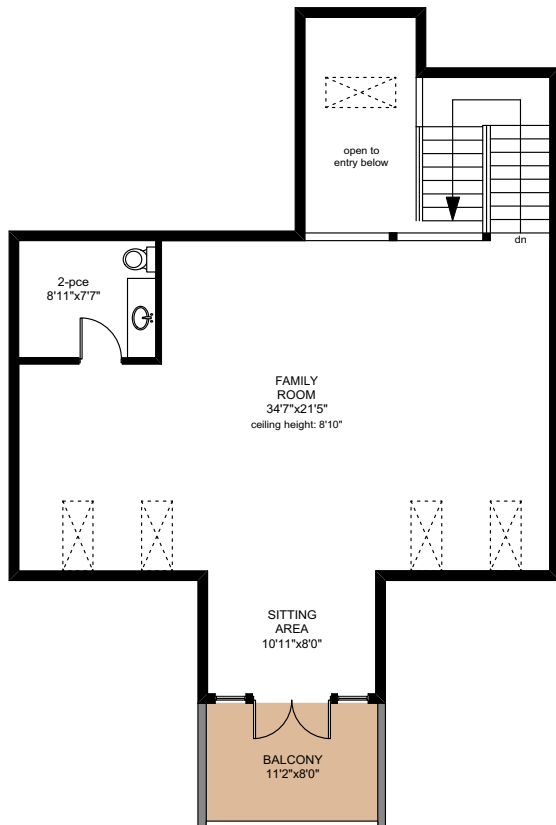

MAIN FLOOR
3318 SQ.FT


PREPARED FOR THE EXCLUSIVE USE OF
 CHRIS & DARLENE HOBBS OF
 SOTHEBY'S INTERNATIONAL REALTY CANADA

MEASURED ON: 06/03/17
 DRAWING FILE: 0218

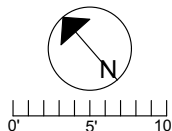
NOTE: This floor plan is provided by Chris & Darlene Hobbs of Sotheby's International Realty Canada as a convenient reference only, and is not to be relied upon as accurate. Prospective Buyers must satisfy themselves not only of the actual measurements, but also to the status of any finished space shown on this floor plan, specifically in relation to minimum ceiling height for habitable rooms required by the BC Building Code, allowable finished floor area in relation to current zoning, and determination if space was developed with necessary municipal permits.

197 PRINGLE FARM ROAD




UPPER FLOOR
 966 SQ.FT

	FINISHED SQ. FT.	UNFINISHED SQ. FT.	TOTAL SQ. FT.
MAIN	3318	0	3318
UPPER	966	0	966
LOWER	0	2118	2118
TOTAL	4284	2118	6402
GARAGE	0	881	881
PORCHES	0	1375	1375
PATIOS	0	728	728
BALCONY	0	89	89
G-HOUSE	0	351	351

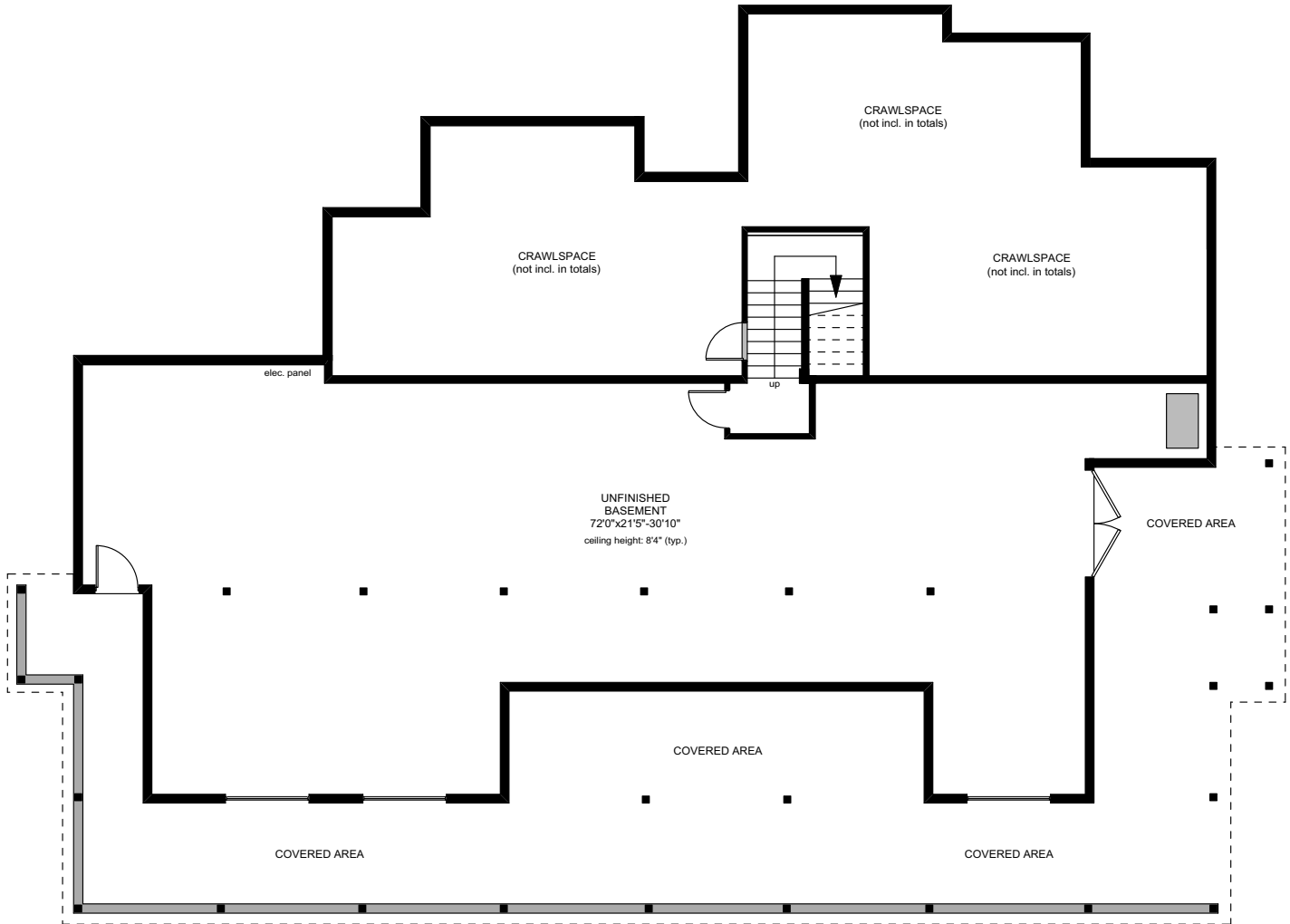



PREPARED FOR THE EXCLUSIVE USE OF
 CHRIS & DARLENE HOBBS OF
 SOTHEBY'S INTERNATIONAL REALTY CANADA

MEASURED ON: 06/03/17
 DRAWING FILE: 0218

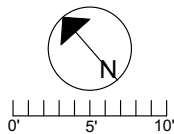
NOTE: This floor plan is provided by Chris & Darlene Hobbs of Sotheby's International Realty Canada as a convenient reference only, and is not to be relied upon as accurate. Prospective Buyers must satisfy themselves not only of the actual measurements, but also to the status of any finished space shown on this floor plan, specifically in relation to minimum ceiling height for habitable rooms required by the BC Building Code, allowable finished floor area in relation to current zoning, and determination if space was developed with necessary municipal permits.

197 PRINGLE FARM ROAD



 LOWER FLOOR
2118 SQ.FT

	FINISHED SQ. FT.	UNFINISHED SQ. FT.	TOTAL SQ. FT.
MAIN	3318	0	3318
UPPER	966	0	966
LOWER	0	2118	2118
TOTAL	4284	2118	6402
GARAGE	0	881	881
PORCHES	0	1375	1375
PATIOS	0	728	728
BALCONY	0	89	89
G-HOUSE	0	351	351

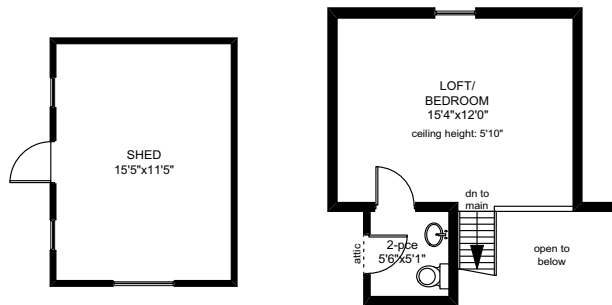
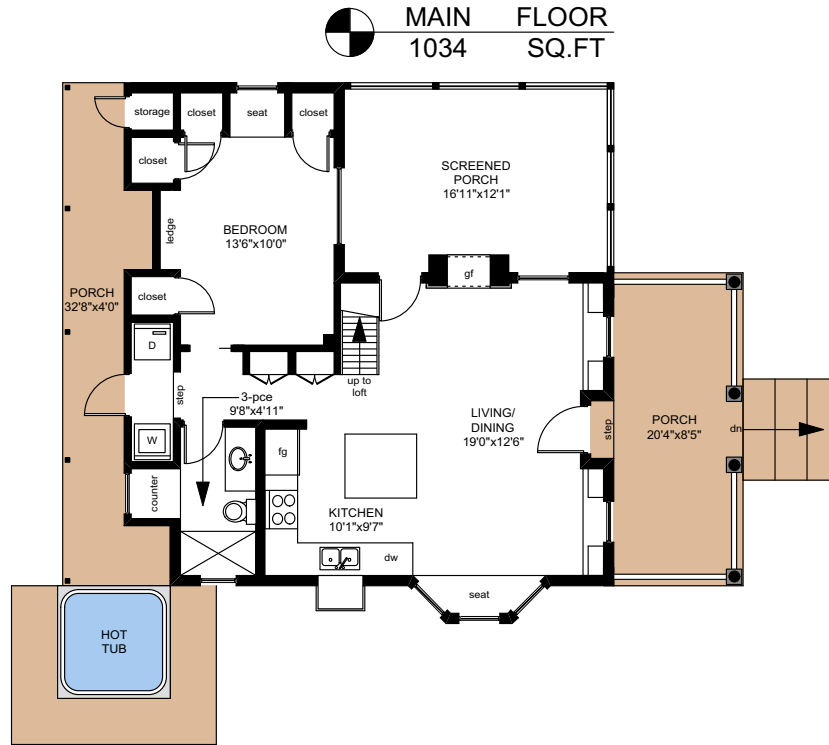


PREPARED FOR THE EXCLUSIVE USE OF
CHRIS & DARLENE HOBBS OF
SOTHEBY'S INTERNATIONAL REALTY CANADA

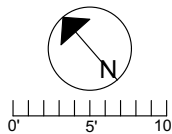
MEASURED ON: 06/03/17
DRAWING FILE: 0218

NOTE: This floor plan is provided by Chris & Darlene Hobbs of Sotheby's International Realty Canada as a convenient reference only, and is not to be relied upon as accurate. Prospective Buyers must satisfy themselves not only of the actual measurements, but also to the status of any finished space shown on this floor plan, specifically in relation to minimum ceiling height for habitable rooms required by the BC Building Code, allowable finished floor area in relation to current zoning, and determination if space was developed with necessary municipal permits.

197 PRINGLE FARM ROAD



	FINISHED SQ. FT.	UNFINISHED SQ. FT.	TOTAL SQ. FT.
MAIN	1034	0	1034
UPPER	257	0	257
TOTAL	1291	0	1291
PORCHES	0	330	330
SHED	0	197	197



PREPARED FOR THE EXCLUSIVE USE OF
 CHRIS & DARLENE HOBBS OF
 SOTHEBY'S INTERNATIONAL REALTY CANADA

MEASURED ON: 06/03/17
 DRAWING FILE: 0218

NOTE: This floor plan is provided by Chris & Darlene Hobbs of Sotheby's International Realty Canada as a convenient reference only, and is not to be relied upon as accurate. Prospective Buyers must satisfy themselves not only of the actual measurements, but also to the status of any finished space shown on this floor plan, specifically in relation to minimum ceiling height for habitable rooms required by the BC Building Code, allowable finished floor area in relation to current zoning, and determination if space was developed with necessary municipal permits.