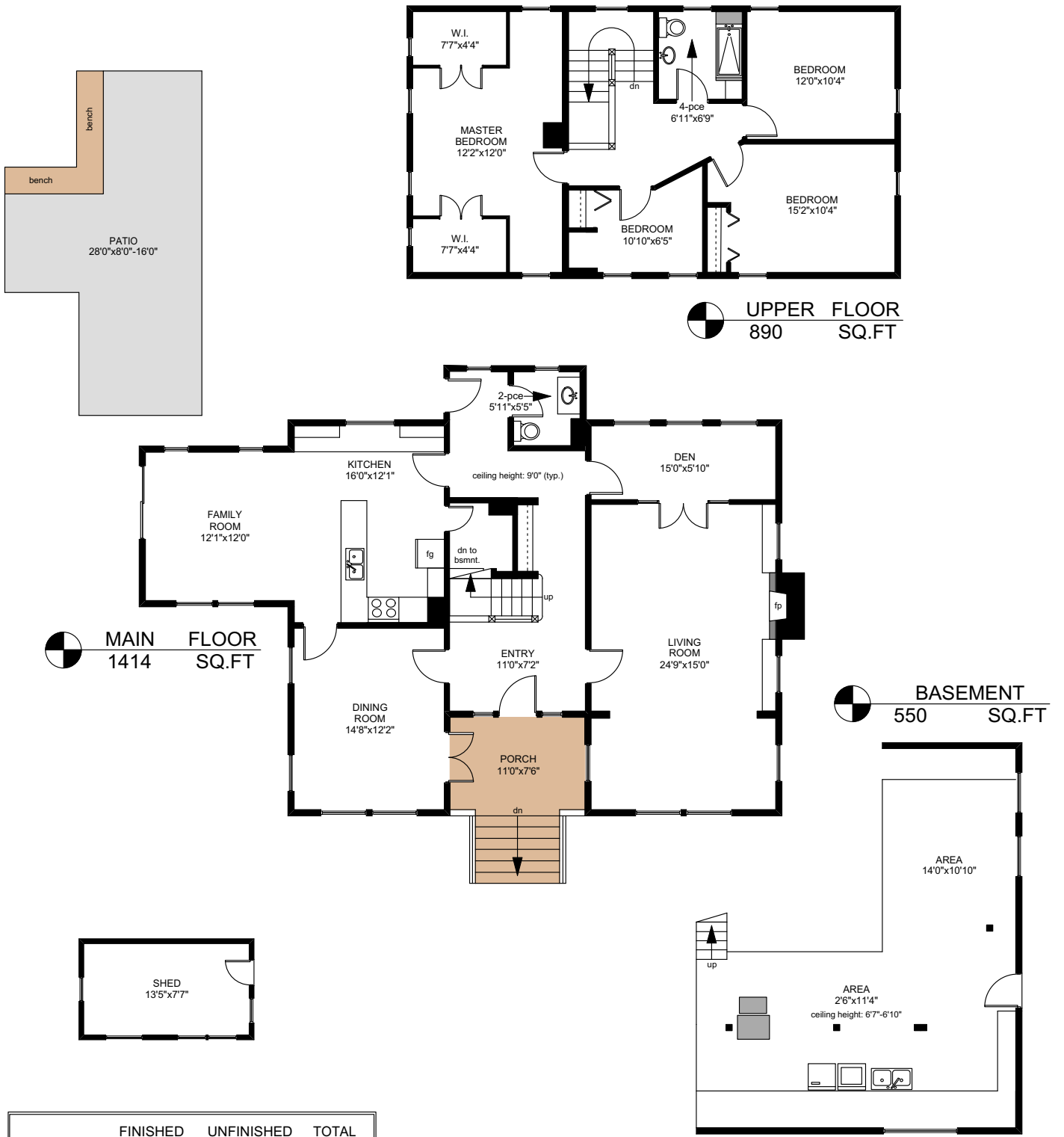
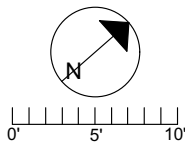


# 330 CHURCHILL ROAD



	FINISHED SQ. FT.	UNFINISHED SQ. FT.	TOTAL SQ. FT.
MAIN	1414	0	1414
UPPER	890	0	890
BASEMENT	0	550	550
<b>TOTAL</b>	<b>2304</b>	<b>550</b>	<b>2854</b>
PORCH	0	86	86
PATIO	0	308	308
SHED	0	117	117



PREPARED FOR THE EXCLUSIVE USE OF  
CHRIS & DARLENE HOBBS OF  
SOTHEBY'S INTERNATIONAL REALTY CANADA

MEASURED ON: 03/09/19  
DRAWING FILE: 0261

NOTE: This floor plan is provided by Chris & Darlene Hobbs of Sotheby's International Realty Canada as a convenient reference only, and is not to be relied upon as accurate. Prospective Buyers must satisfy themselves not only of the actual measurements, but also to the status of any finished space shown on this floor plan, specifically in relation to minimum ceiling height for habitable rooms required by the BC Building Code, allowable finished floor area in relation to current zoning, and determination if space was developed with necessary municipal permits.