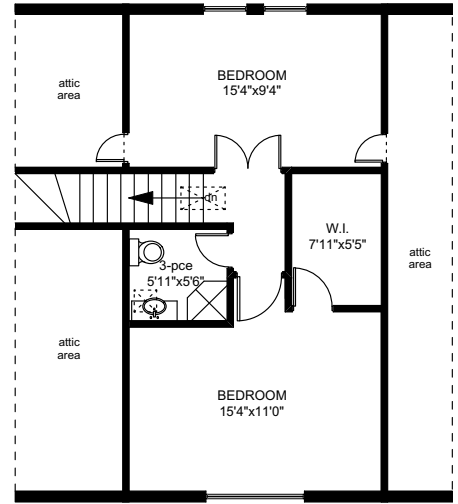
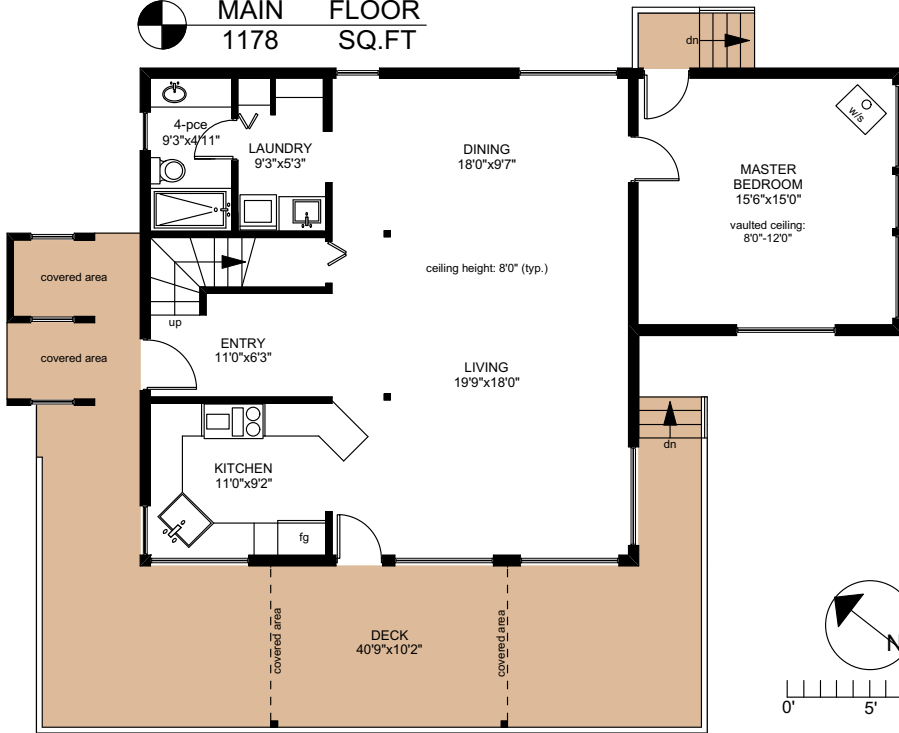
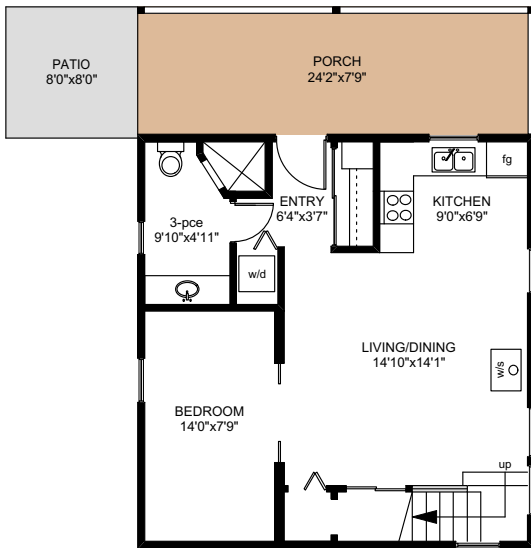
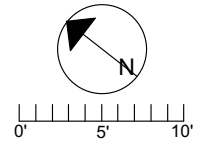


# 150 HILLTOP ROAD

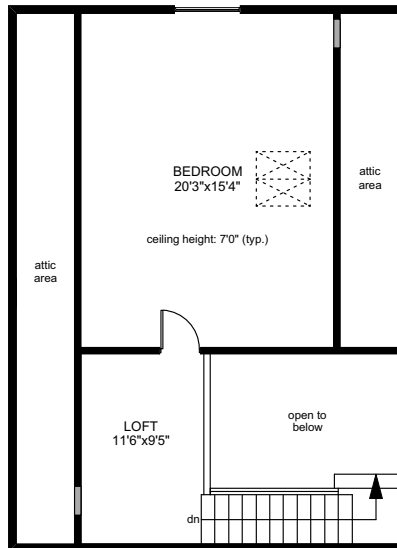
**MAIN FLOOR**  
1178 SQ.FT



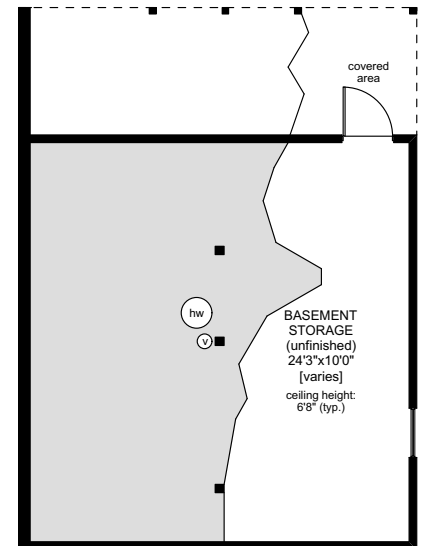
**UPPER FLOOR**  
487 SQ.FT



**MAIN FLOOR**  
609 SQ.FT

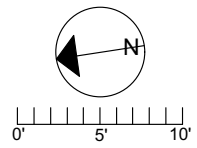


**UPPER FLOOR**  
440 SQ.FT



**BASEMENT**  
243 SQ.FT

	FINISHED SQ. FT.	UNFINISHED SQ. FT.	TOTAL SQ. FT.
MAIN	1178	0	1178
UPPER	487	0	487
TOTAL	1665	0	1665
DECK	0	595	595
Cottage:			
MAIN	609	0	609
UPPER	440	0	440
BSMT	0	243	243
TOTAL	1049	243	1292
PORCH	0	187	187
PATIO	0	64	64

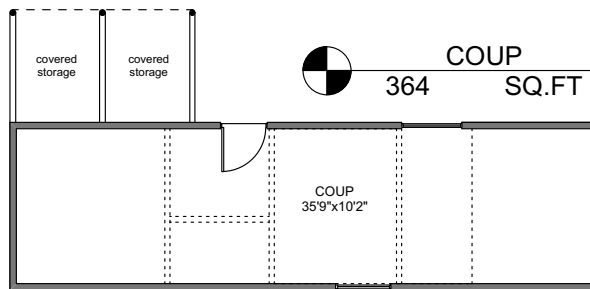
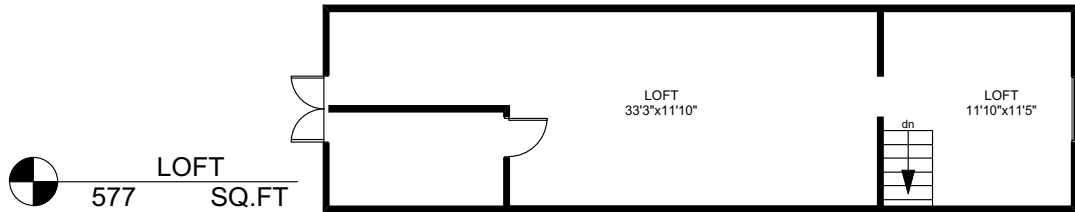
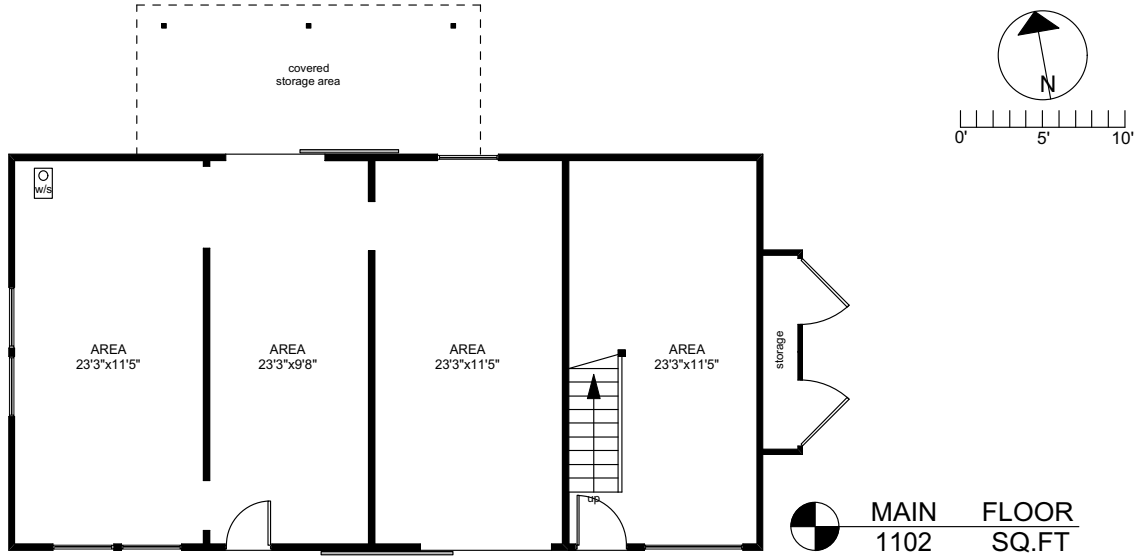


PREPARED FOR THE EXCLUSIVE USE OF  
CHRIS & DARLENE HOBBS OF  
SOTHEBY'S INTERNATIONAL REALTY CANADA

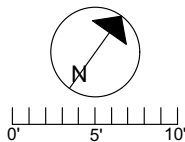
MEASURED ON: 01/02/19  
DRAWING FILE: 0260

NOTE: This floor plan is provided by Chris & Darlene Hobbs of Sotheby's International Realty Canada as a convenient reference only, and is not to be relied upon as accurate. Prospective Buyers must satisfy themselves not only of the actual measurements, but also to the status of any finished space shown on this floor plan, specifically in relation to minimum ceiling height for habitable rooms required by the BC Building Code, allowable finished floor area in relation to current zoning, and determination if space was developed with necessary municipal permits.

# 150 HILLTOP ROAD



	FINISHED SQ. FT.	UNFINISHED SQ. FT.	TOTAL SQ. FT.
Barn:			
MAIN	0	1102	1102
LOFT	0	577	577
TOTAL	0	1679	1679
COUP	0	364	364



PREPARED FOR THE EXCLUSIVE USE OF  
CHRIS & DARLENE HOBBS OF  
SOTHEBY'S INTERNATIONAL REALTY CANADA

MEASURED ON: 01/02/19  
DRAWING FILE: 0260

NOTE: This floor plan is provided by Chris & Darlene Hobbs of Sotheby's International Realty Canada as a convenient reference only, and is not to be relied upon as accurate. Prospective Buyers must satisfy themselves not only of the actual measurements, but also to the status of any finished space shown on this floor plan, specifically in relation to minimum ceiling height for habitable rooms required by the BC Building Code, allowable finished floor area in relation to current zoning, and determination if space was developed with necessary municipal permits.