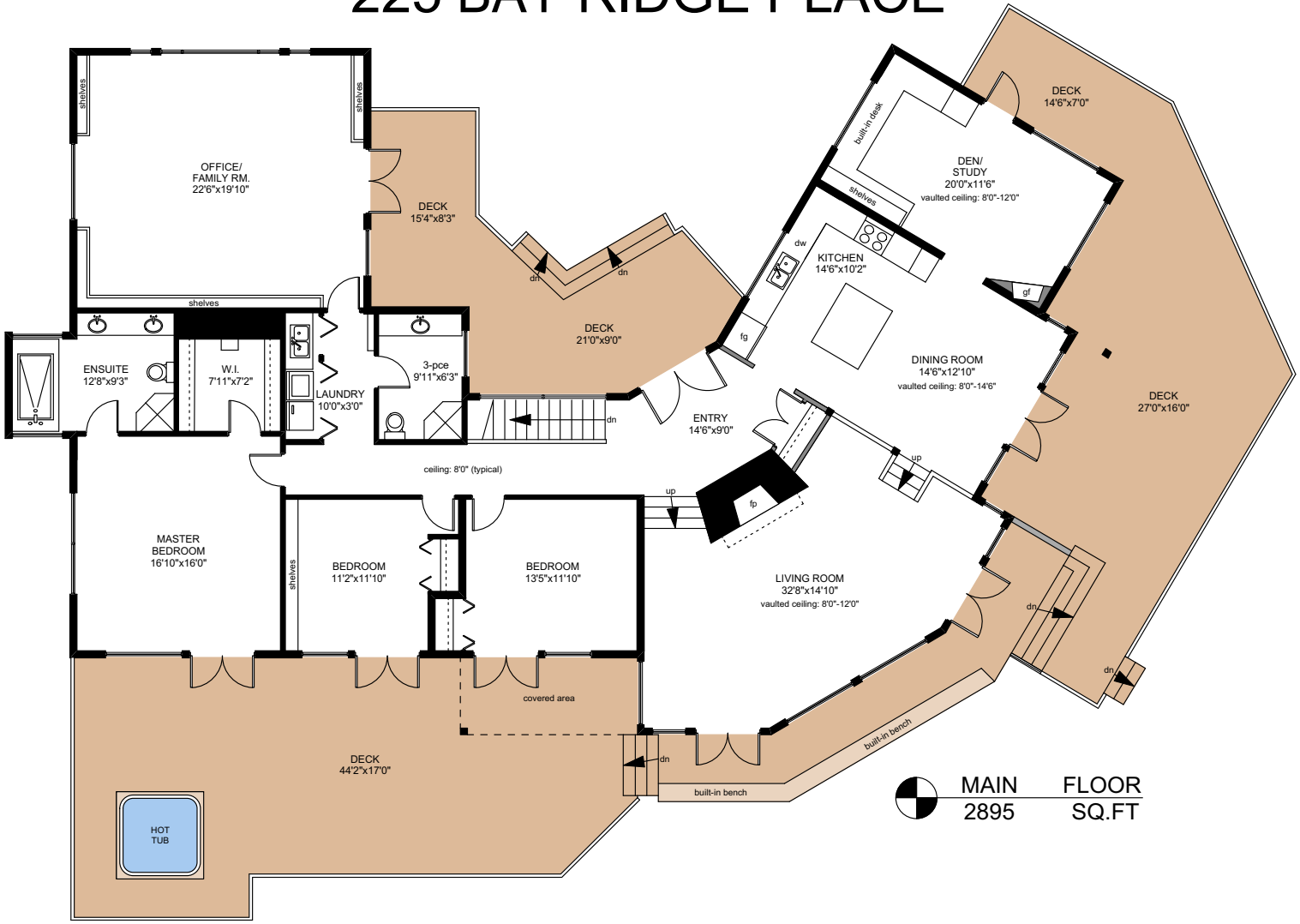
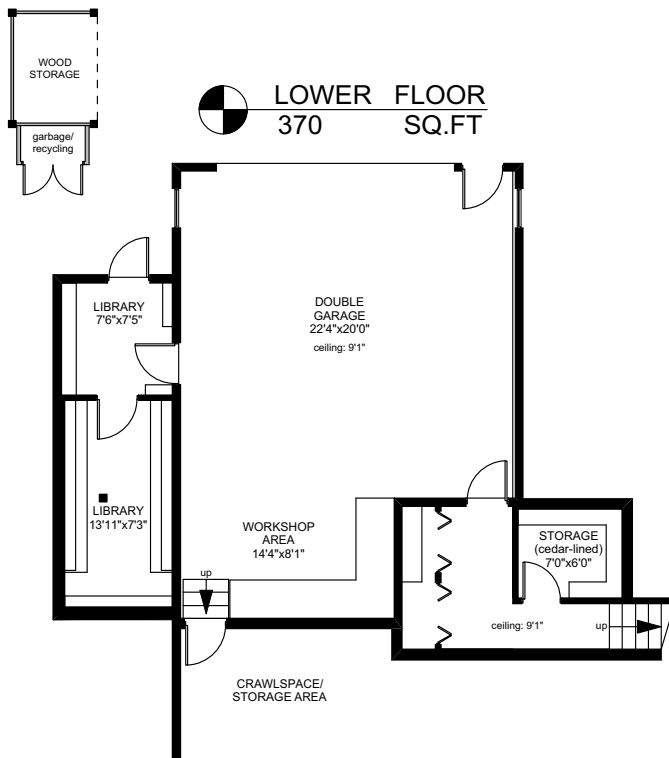


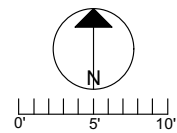
225 BAY RIDGE PLACE



MAIN FLOOR
 2895 SQ.FT



LOWER FLOOR
 370 SQ.FT



	FINISHED SQ. FT.	UNFINISHED SQ. FT.	TOTAL SQ. FT.
MAIN	2895	0	2895
LOWER	370	0	370
TOTAL	3265	0	3265
GARAGE	0	663	663
DECKS	0	1895	1895

PREPARED FOR THE EXCLUSIVE USE OF
 CHRIS & DARLENE HOBBS OF
 SOTHEBY'S INTERNATIONAL REALTY CANADA

MEASURED ON: 08/04/18
 DRAWING FILE: 0251

NOTE: This floor plan is provided by Chris & Darlene Hobbs of Sotheby's International Realty Canada as a convenient reference only, and is not to be relied upon as accurate. Prospective Buyers must satisfy themselves not only of the actual measurements, but also to the status of any finished space shown on this floor plan, specifically in relation to minimum ceiling height for habitable rooms required by the BC Building Code, allowable finished floor area in relation to current zoning, and determination if space was developed with necessary municipal permits.