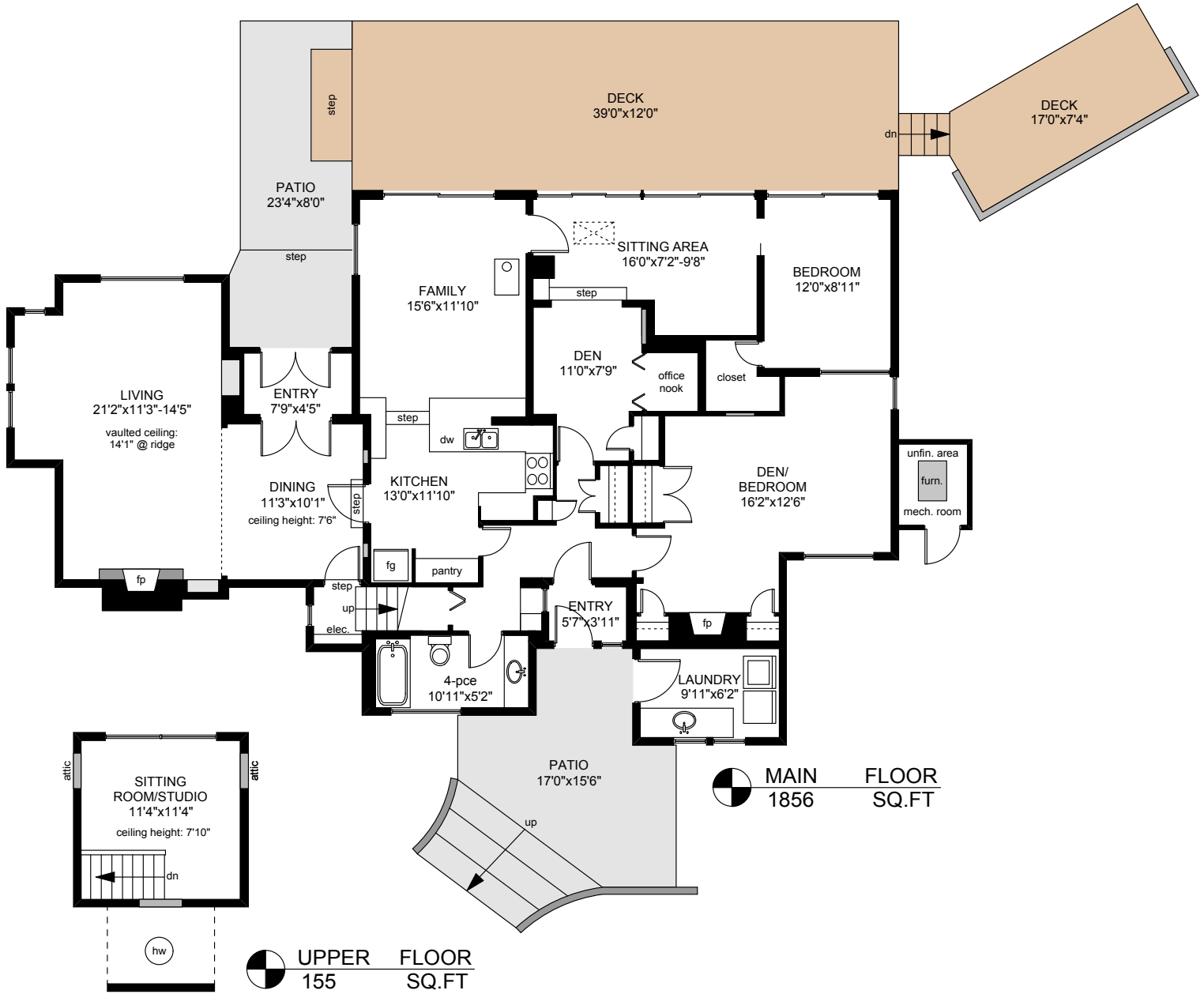
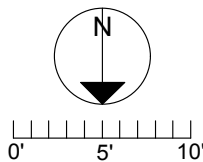


194 OLD SCOTT ROAD



	FINISHED SQ. FT.	UNFINISHED SQ. FT.	TOTAL SQ. FT.
MAIN	1822	34	1856
UPPER	155	0	155
TOTAL	1977	34	2011
DECKS	0	595	595
PATIOS	0	346	346
COTTAGE	496	0	496
DECK	0	287	287
GARAGE	0	696	696
UPPER	0	333	333
SHED	0	45	45



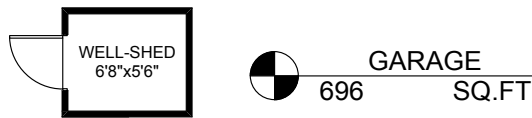
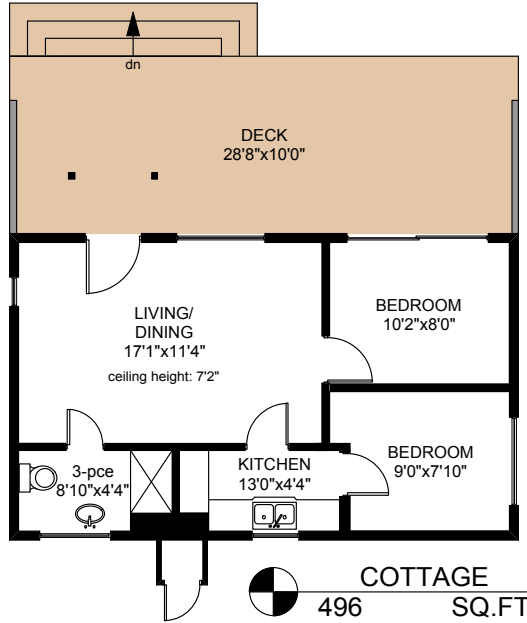
PREPARED FOR THE EXCLUSIVE USE OF
CHRIS & DARLENE HOBBS OF
SOTHEBY'S INTERNATIONAL REALTY CANADA

MEASURED ON: 01/07/15
DRAWING FILE: 12400

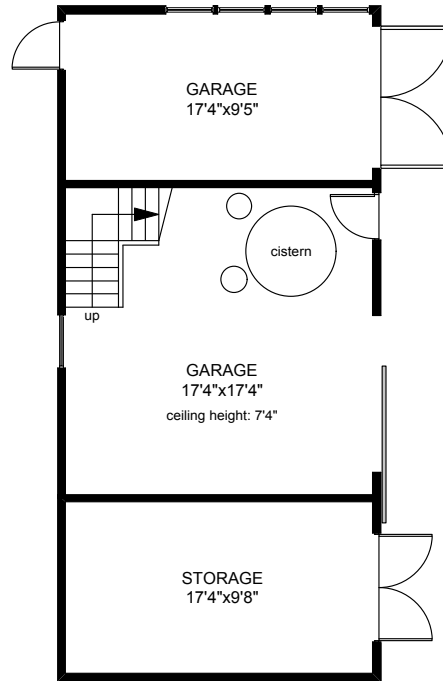
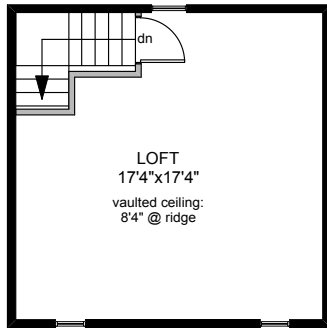
Tafe Measure VICTORIA, B.C.
Ph. 883.8894
www.tafemeasure.com

NOTE: This floor plan is provided by Chris & Darlene Hobbs of Sotheby's International Realty Canada as a convenient reference only, and is not to be relied upon as accurate. Prospective Buyers must satisfy themselves not only of the actual measurements, but also to the status of any finished space shown on this floor plan, specifically in relation to minimum ceiling height for habitable rooms required by the BC Building Code, allowable finished floor area in relation to current zoning, and determination if space was developed with necessary municipal permits.

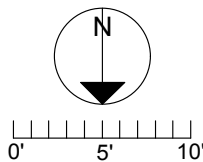
194 OLD SCOTT ROAD



UPPER FLOOR
333 SQ.FT



	FINISHED SQ. FT.	UNFINISHED SQ. FT.	TOTAL SQ. FT.
MAIN	1822	34	1856
UPPER	155	0	155
TOTAL	1977	34	2011
DECKS	0	595	595
PATIOS	0	346	346
COTTAGE	496	0	496
DECK	0	287	287
GARAGE	0	696	696
UPPER	0	333	333
SHED	0	45	45



PREPARED FOR THE EXCLUSIVE USE OF
CHRIS & DARLENE HOBBS OF
SOTHEBY'S INTERNATIONAL REALTY CANADA

MEASURED ON: 01/07/15
DRAWING FILE: 12400

Tafe Measure VICTORIA, B.C.
Ph. 883.8894
www.tafemeasure.com

NOTE: This floor plan is provided by Chris & Darlene Hobbs of Sotheby's International Realty Canada as a convenient reference only, and is not to be relied upon as accurate. Prospective Buyers must satisfy themselves not only of the actual measurements, but also to the status of any finished space shown on this floor plan, specifically in relation to minimum ceiling height for habitable rooms required by the BC Building Code, allowable finished floor area in relation to current zoning, and determination if space was developed with necessary municipal permits.