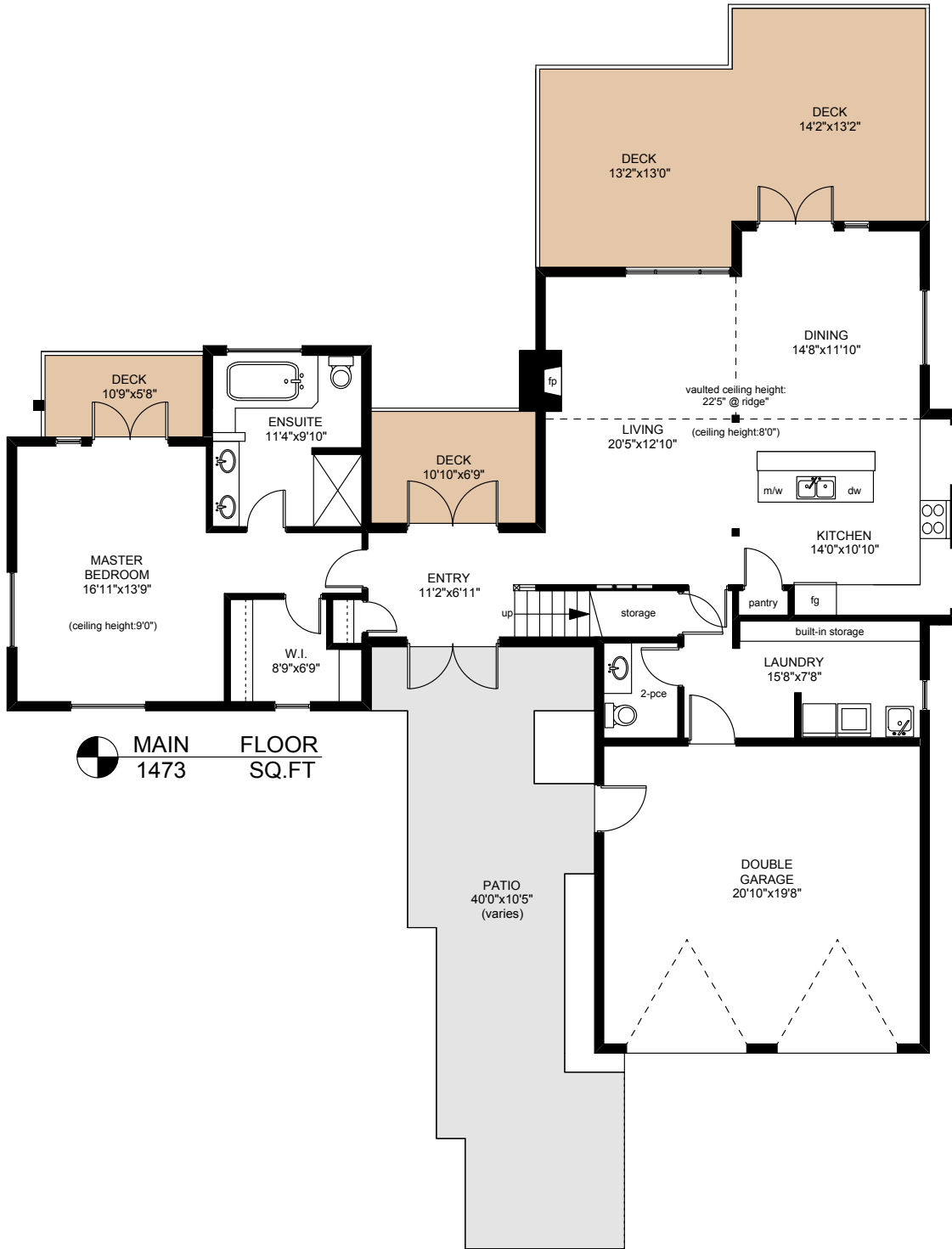

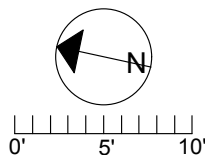


130 BISHOPS WALK ROAD




MAIN FLOOR
1473 SQ.FT

	FINISHED SQ. FT.	UNFINISHED SQ. FT.	TOTAL SQ. FT.
MAIN	1473	0	1473
UPPER	651	0	651
LOWER	0	511	511
TOTAL	2124	511	2635
GARAGE	0	454	454
DECKS	0	502	502
PATIOS	0	507	507



PREPARED FOR THE EXCLUSIVE USE OF
 CHRIS & DARLENE HOBBS OF
 SOTHEBY'S INTERNATIONAL REALTY CANADA

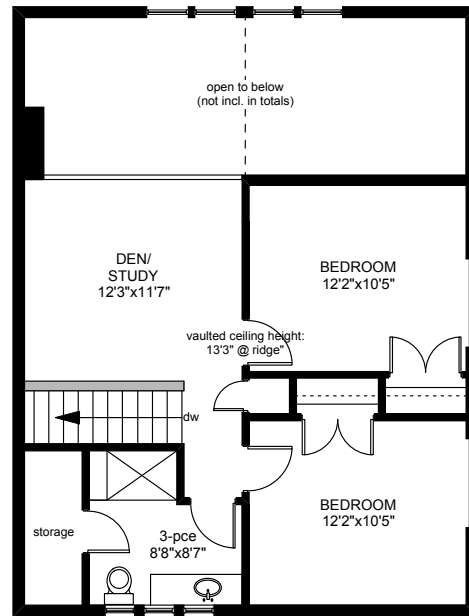
MEASURED ON: 06/07/12
 DRAWING FILE: 10404


Tafe Measure VICTORIA, B.C.
 Ph. 883.8894
 www.tafemeasure.com

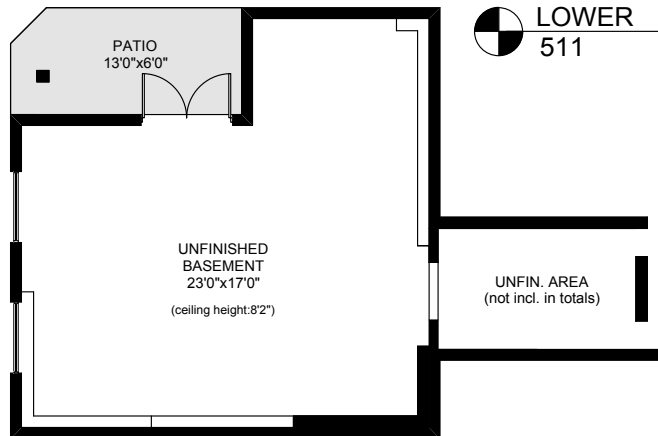
NOTE: This floor plan is provided by Chris & Darlene Hobbs of Sotheby's International Realty Canada as a convenient reference only, and is not to be relied upon as accurate. Prospective Buyers must satisfy themselves not only of the actual measurements, but also to the status of any finished space shown on this floor plan, specifically in relation to minimum ceiling height for habitable rooms required by the BC Building Code, allowable finished floor area in relation to current zoning, and determination if space was developed with necessary municipal permits.

130 BISHOPS WALK ROAD

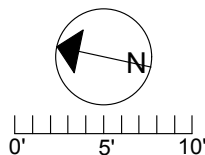

UPPER FLOOR
 651 SQ.FT




LOWER FLOOR
 511 SQ.FT



	FINISHED SQ. FT.	UNFINISHED SQ. FT.	TOTAL SQ. FT.
MAIN	1473	0	1473
UPPER	651	0	651
LOWER	0	511	511
TOTAL	2124	511	2635
GARAGE	0	454	454
DECKS	0	502	502
PATIOS	0	507	507



PREPARED FOR THE EXCLUSIVE USE OF
 CHRIS & DARLENE HOBBS OF
 SOTHEBY'S INTERNATIONAL REALTY CANADA

MEASURED ON: 06/07/12
 DRAWING FILE: 10404

Tafe Measure VICTORIA, B.C.
 Ph. 883.8894
 www.tafemeasure.com

NOTE: This floor plan is provided by Chris & Darlene Hobbs of Sotheby's International Realty Canada as a convenient reference only, and is not to be relied upon as accurate. Prospective Buyers must satisfy themselves not only of the actual measurements, but also to the status of any finished space shown on this floor plan, specifically in relation to minimum ceiling height for habitable rooms required by the BC Building Code, allowable finished floor area in relation to current zoning, and determination if space was developed with necessary municipal permits.