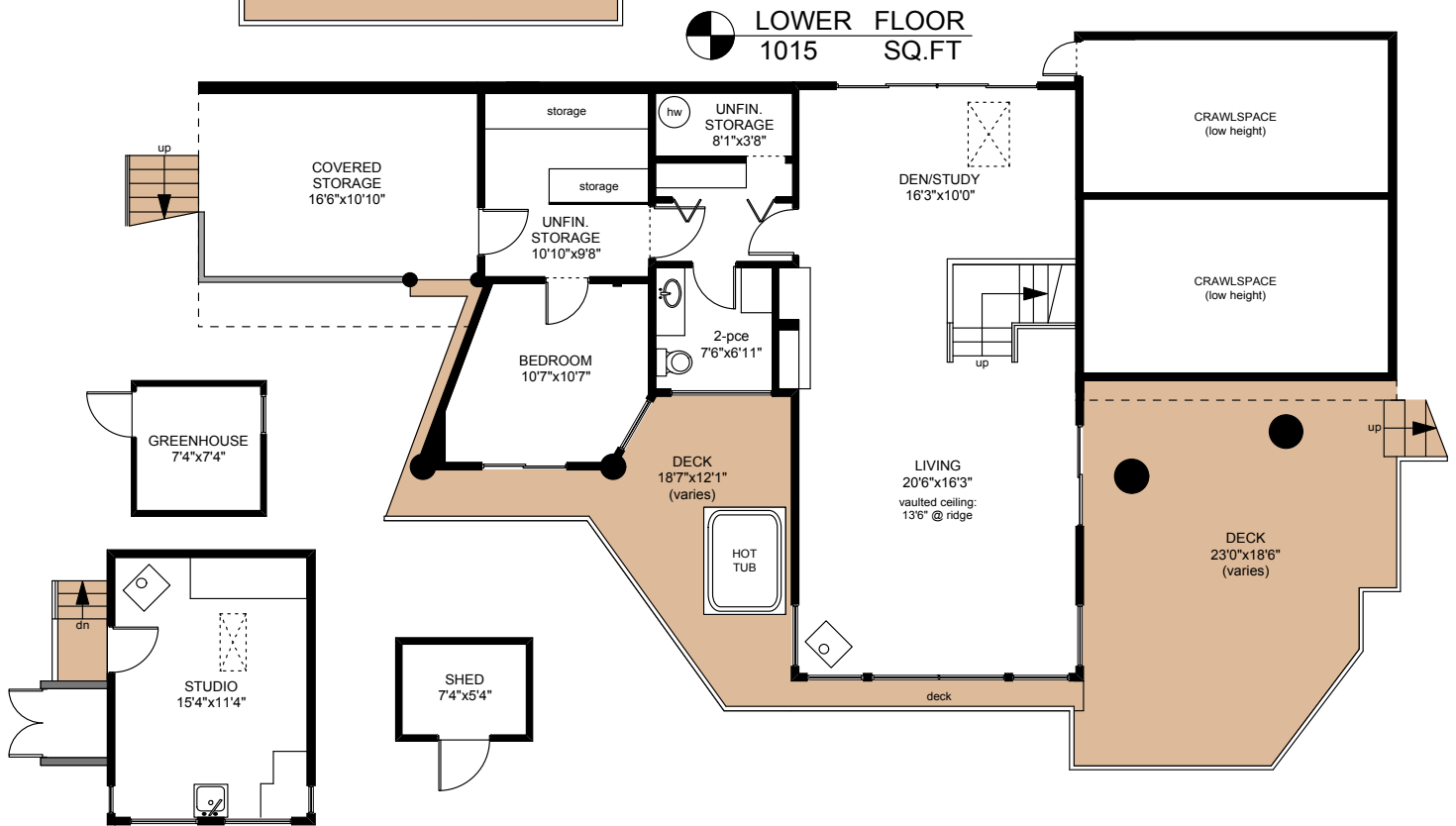
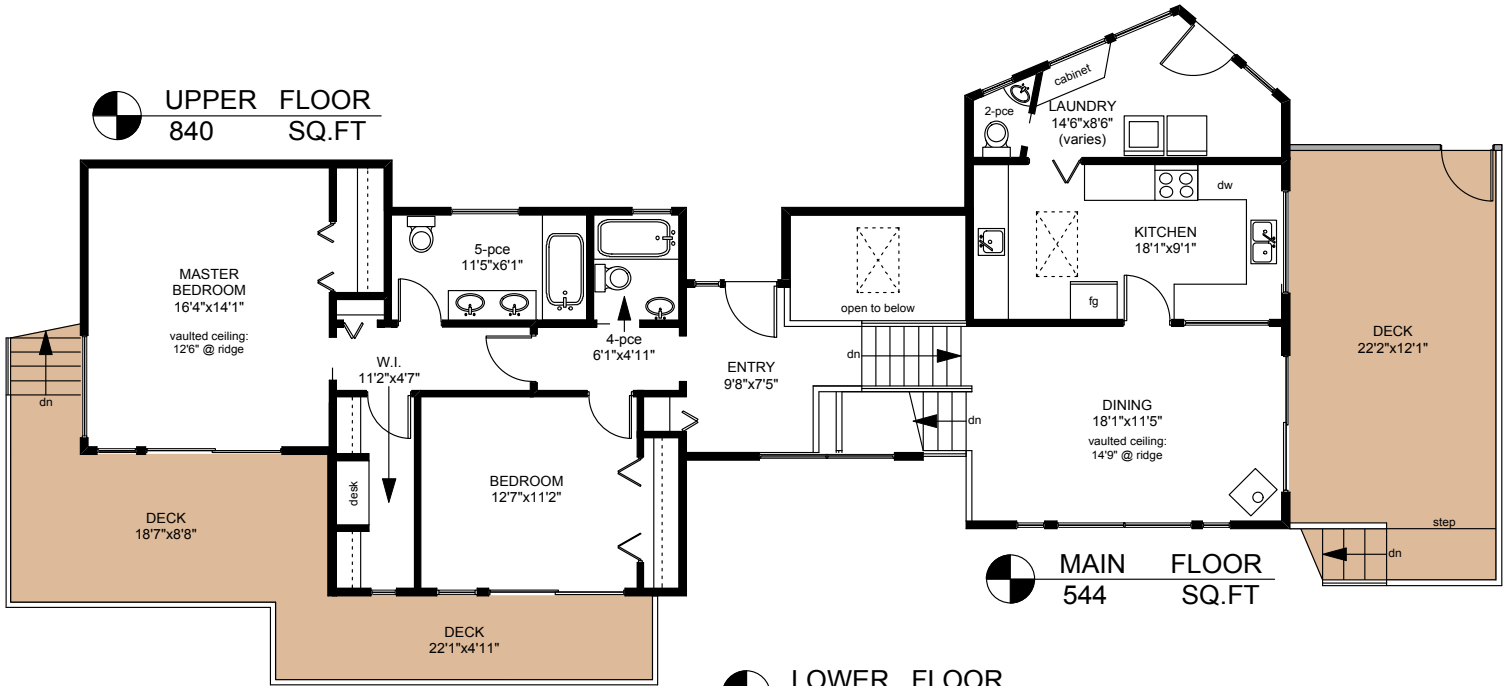
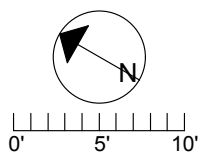


# 234 SCOTT POINT DRIVE



	FINISHED SQ. FT.	UNFINISHED SQ. FT.	TOTAL SQ. FT.
MAIN	544	0	544
UPPER	840	0	840
LOWER	857	158	1015
<b>TOTAL</b>	<b>2241</b>	<b>158</b>	<b>2399</b>
DECKS	0	1177	1177
STUDIO	0	200	200
G-HOUSE	0	64	64
SHED	0	49	49



PREPARED FOR THE EXCLUSIVE USE OF  
CHRIS & DARLENE HOBBS OF  
SOTHEBY'S INTERNATIONAL REALTY CANADA

MEASURED ON: 06/10/13  
DRAWING FILE: 11219

**Tafe Measure** VICTORIA, B.C.  
Ph. 883.8894  
www.tafemeasure.com

NOTE: This floor plan is provided by Chris & Darlene Hobbs of Sotheby's International Realty Canada as a convenient reference only, and is not to be relied upon as accurate. Prospective Buyers must satisfy themselves not only of the actual measurements, but also to the status of any finished space shown on this floor plan, specifically in relation to minimum ceiling height for habitable rooms required by the BC Building Code, allowable finished floor area in relation to current zoning, and determination if space was developed with necessary municipal permits.