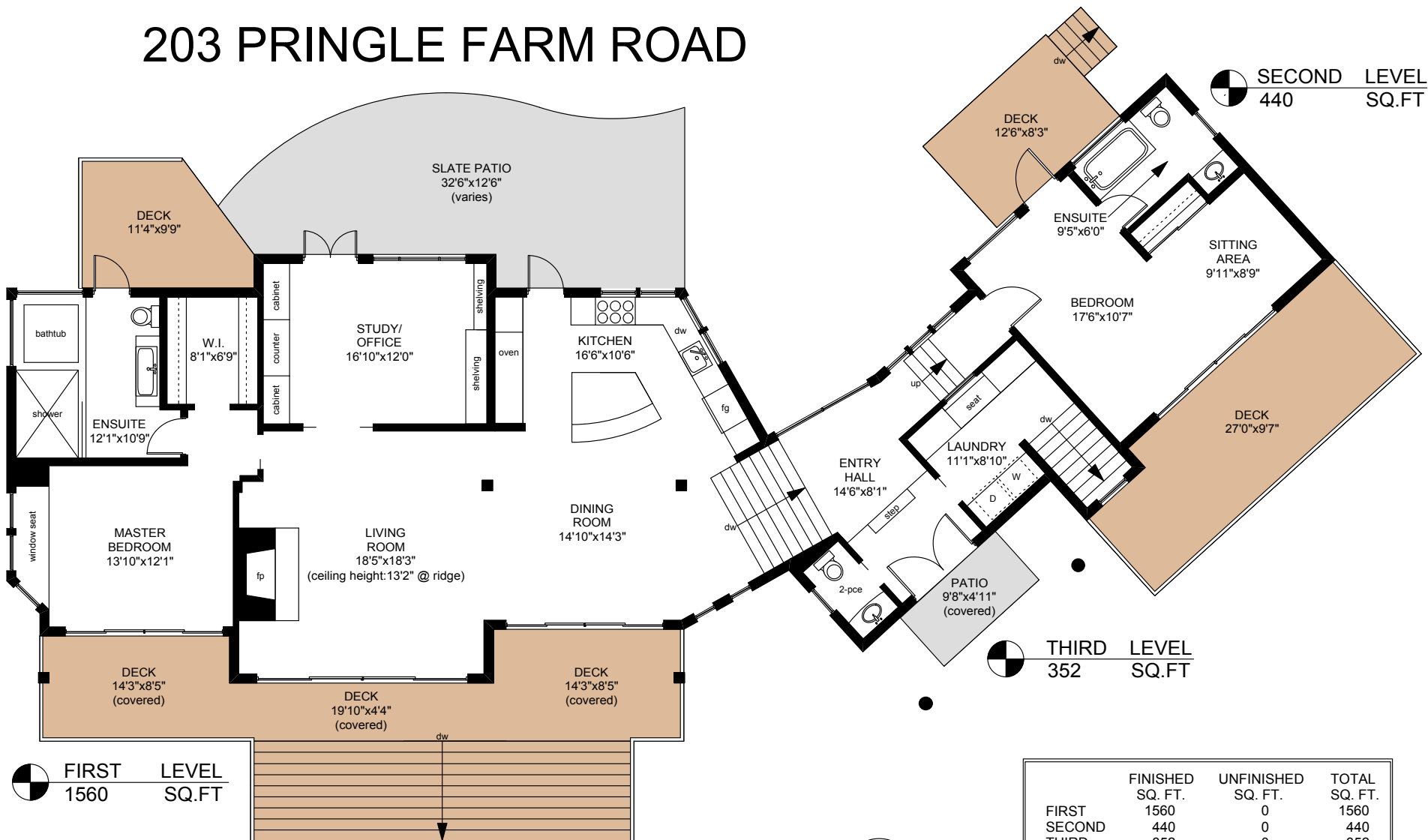


# 203 PRINGLE FARM ROAD



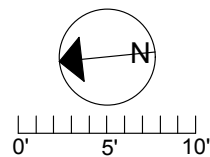
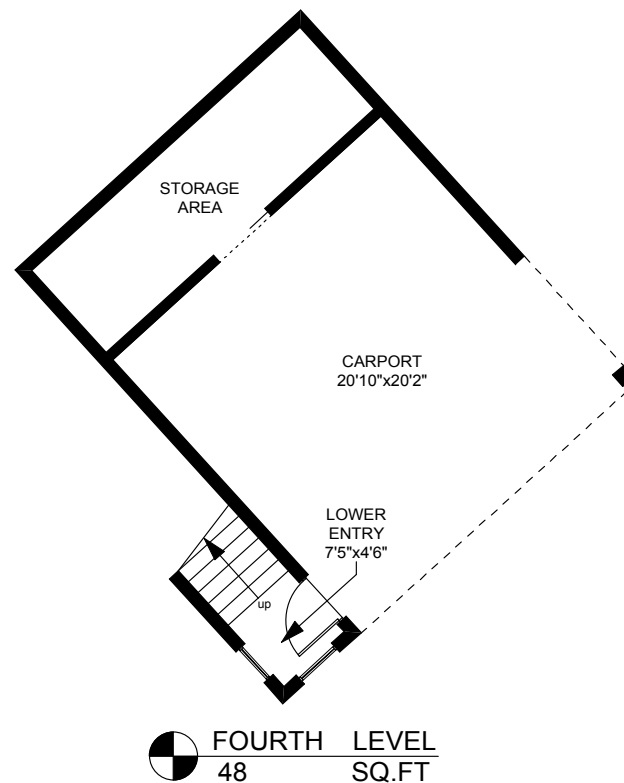
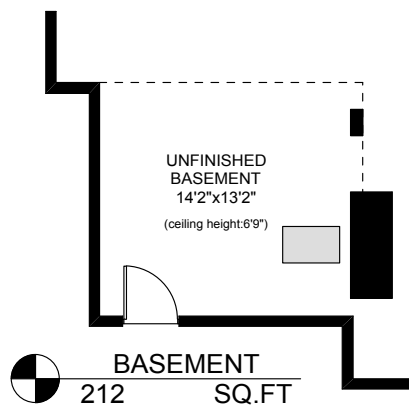
	FINISHED SQ. FT.	UNFINISHED SQ. FT.	TOTAL SQ. FT.
FIRST	1560	0	1560
SECOND	440	0	440
THIRD	352	0	352
FOURTH	48	0	48
BASEMENT	0	212	212
<b>TOTAL</b>	<b>2400</b>	<b>212</b>	<b>2612</b>
CARPORT	0	425	425
STORAGE	0	157	157
DECKS	0	793	793
PATIOS	0	440	440

PREPARED FOR THE EXCLUSIVE USE OF  
CHRIS & DARLENE HOBBS OF  
SOTHEBY'S INTERNATIONAL REALTY CANADA

MEASURED ON: 04/26/11  
DRAWING FILE: 09221

**Tafe Measure** VICTORIA, B.C.  
Ph. 883.8894  
www.tafemeasure.com

# 203 PRINGLE FARM ROAD



	FINISHED SQ. FT.	UNFINISHED SQ. FT.	TOTAL SQ. FT.
FIRST	1560	0	1560
SECOND	440	0	440
THIRD	352	0	352
FOURTH	48	0	48
BASEMENT	0	212	212
<b>TOTAL</b>	<b>2400</b>	<b>212</b>	<b>2612</b>
CARPORT	0	425	425
STORAGE	0	157	157
DECKS	0	793	793
PATIOS	0	440	440

PREPARED FOR THE EXCLUSIVE USE OF  
CHRIS & DARLENE HOBBS OF  
SOTHEBY'S INTERNATIONAL REALTY CANADA

MEASURED ON: 04/26/11  
DRAWING FILE: 09221

**Tafe** Measure VICTORIA, B.C.  
Ph. 883.8894  
www.tafemeasure.com