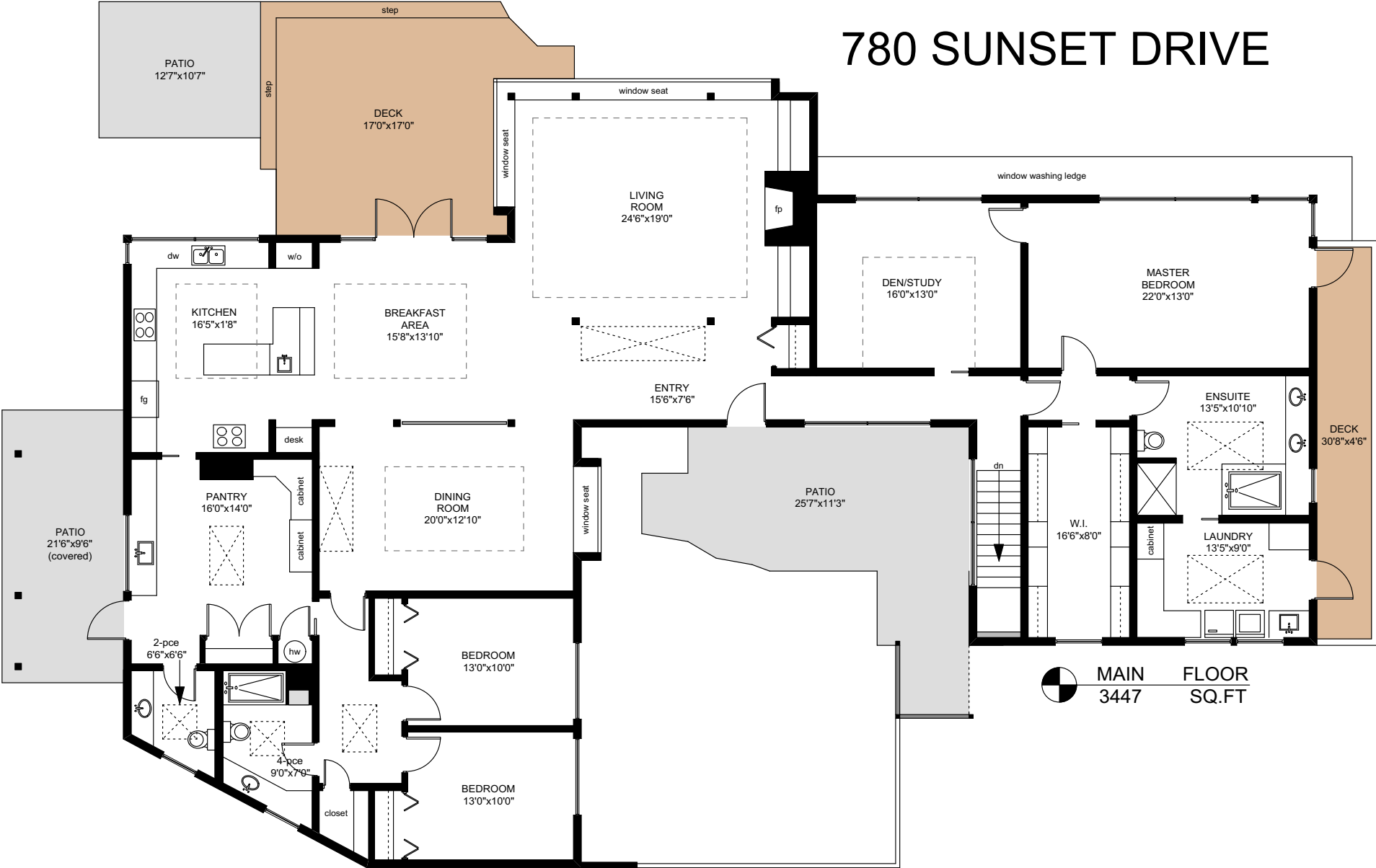
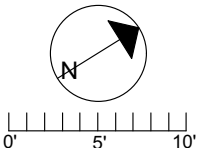


# 780 SUNSET DRIVE



MAIN FLOOR  
3447 SQ. FT.

	FINISHED SQ. FT.	UNFINISHED SQ. FT.	TOTAL SQ. FT.
MAIN	3447	0	3447
LOWER	340	0	340
TOTAL	3787	0	3787
GARAGE	0	464	464
PATIOS	0	668	668
DECKS	0	482	482
STUDIO	0	311	311

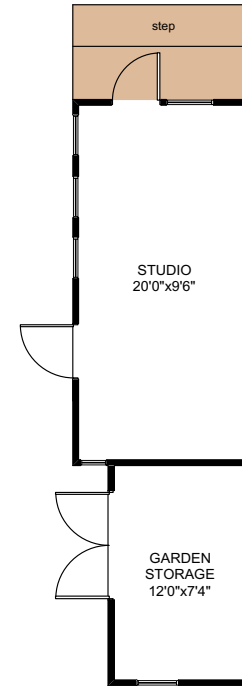
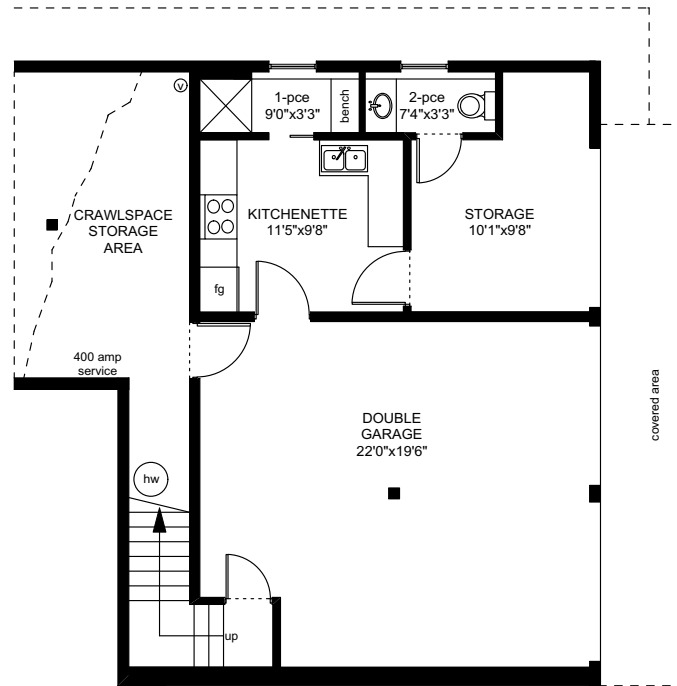



PREPARED FOR THE EXCLUSIVE USE OF  
CHRIS & DARLENE HOBBS OF  
SOTHEBY'S INTERNATIONAL REALTY CANADA

MEASURED ON: 05/08/18  
DRAWING FILE: 0240

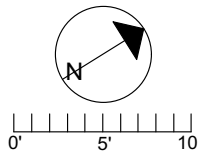
NOTE: This floor plan is provided by Chris & Darlene Hobbs of Sotheby's International Realty Canada as a convenient reference only, and is not to be relied upon as accurate. Prospective Buyers must satisfy themselves not only of the actual measurements, but also to the status of any finished space shown on this floor plan, specifically in relation to minimum ceiling height for habitable rooms required by the BC Building Code, allowable finished floor area in relation to current zoning, and determination if space was developed with necessary municipal permits.

# 780 SUNSET DRIVE



 LOWER FLOOR  
340 SQ.FT

	FINISHED SQ. FT.	UNFINISHED SQ. FT.	TOTAL SQ. FT.
MAIN	3447	0	3447
LOWER	340	0	340
TOTAL	3787	0	3787
GARAGE	0	464	464
PATIOS	0	668	668
DECKS	0	482	482
STUDIO	0	311	311



PREPARED FOR THE EXCLUSIVE USE OF  
CHRIS & DARLENE HOBBS OF  
SOTHEBY'S INTERNATIONAL REALTY CANADA

---

MEASURED ON: 05/08/18  
DRAWING FILE: 0240

NOTE: This floor plan is provided by Chris & Darlene Hobbs of Sotheby's International Realty Canada as a convenient reference only, and is not to be relied upon as accurate. Prospective Buyers must satisfy themselves not only of the actual measurements, but also to the status of any finished space shown on this floor plan, specifically in relation to minimum ceiling height for habitable rooms required by the BC Building Code, allowable finished floor area in relation to current zoning, and determination if space was developed with necessary municipal permits.