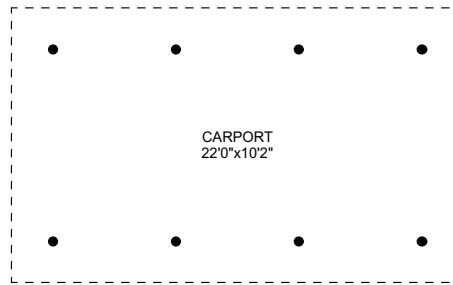
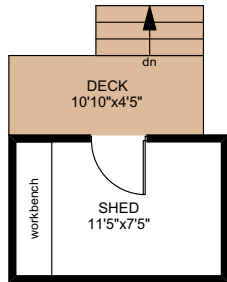
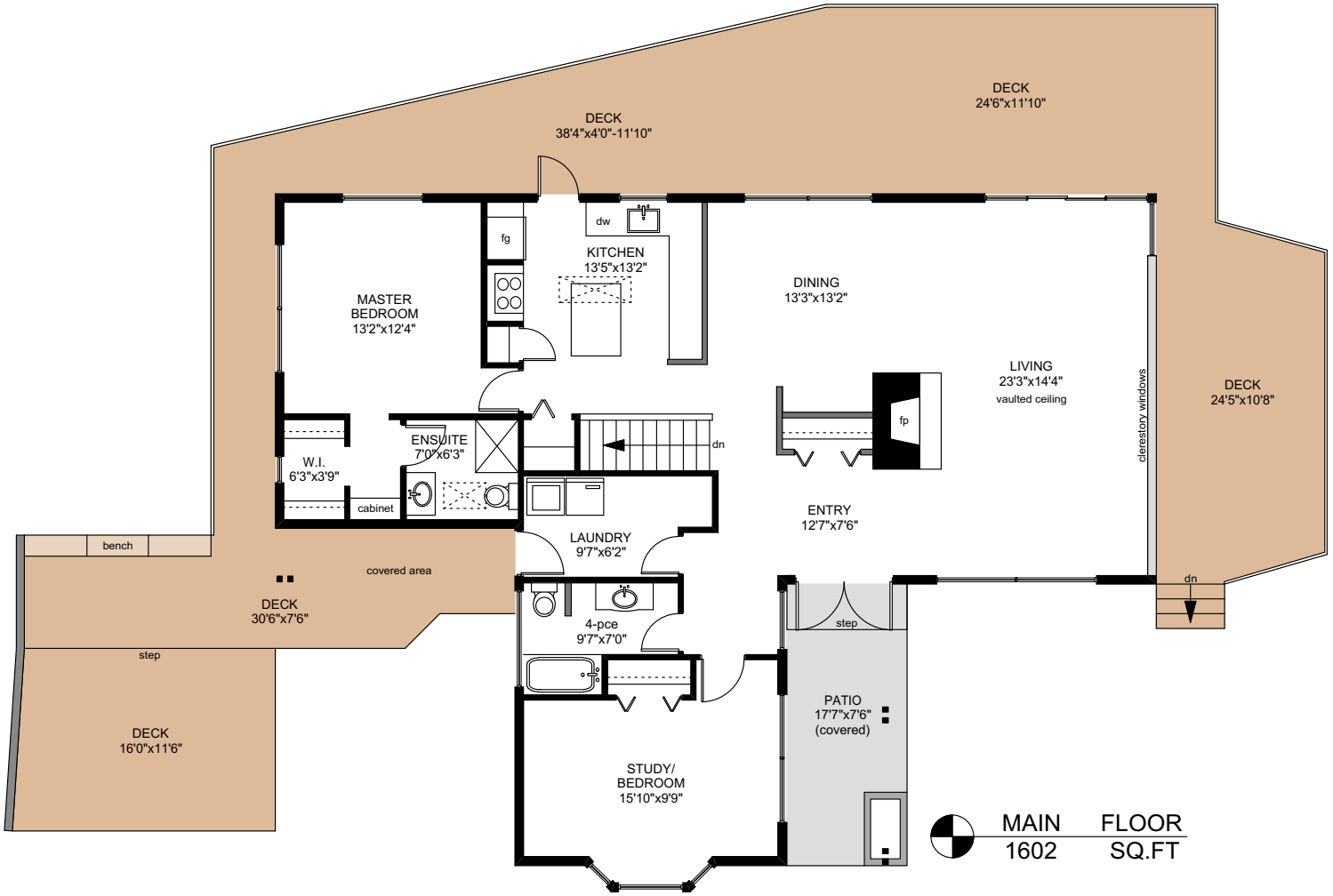
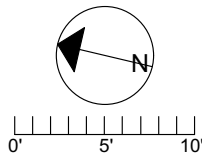


# 217 ISLE VIEW DRIVE



	FINISHED SQ. FT.	UNFINISHED SQ. FT.	TOTAL SQ. FT.
MAIN	1602	0	1602
LOWER	1126	171	1297
TOTAL	2728	171	2899
CARPORT	0	224	224
DECKS	0	1323	1323
PATIOS	0	657	657
SHED	0	100	100

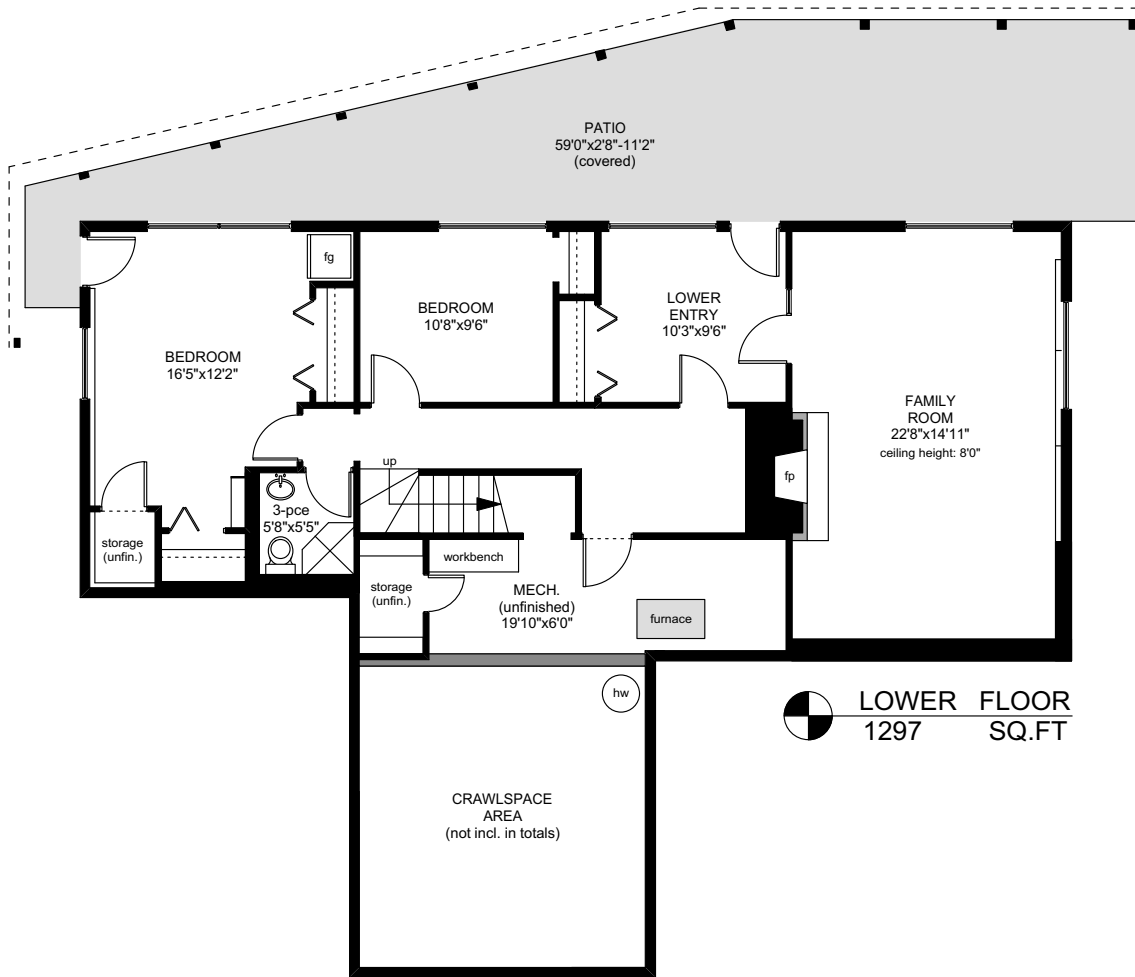


PREPARED FOR THE EXCLUSIVE USE OF  
CHRIS & DARLENE HOBBS OF  
SOTHEBY'S INTERNATIONAL REALTY CANADA

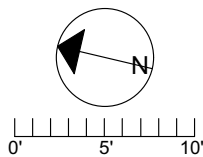
MEASURED ON: 06/23/17  
DRAWING FILE: 0220

NOTE: This floor plan is provided by Chris & Darlene Hobbs of Sotheby's International Realty Canada as a convenient reference only, and is not to be relied upon as accurate. Prospective Buyers must satisfy themselves not only of the actual measurements, but also to the status of any finished space shown on this floor plan, specifically in relation to minimum ceiling height for habitable rooms required by the BC Building Code, allowable finished floor area in relation to current zoning, and determination if space was developed with necessary municipal permits.

# 217 ISLE VIEW DRIVE



	FINISHED SQ. FT.	UNFINISHED SQ. FT.	TOTAL SQ. FT.
MAIN	1602	0	1602
LOWER	1126	171	1297
<b>TOTAL</b>	<b>2728</b>	<b>171</b>	<b>2899</b>
CARPORT	0	224	224
DECKS	0	1323	1323
PATIOS	0	657	657
SHED	0	100	100



PREPARED FOR THE EXCLUSIVE USE OF  
CHRIS & DARLENE HOBBS OF  
SOTHEBY'S INTERNATIONAL REALTY CANADA

MEASURED ON: 06/23/17  
DRAWING FILE: 0220

NOTE: This floor plan is provided by Chris & Darlene Hobbs of Sotheby's International Realty Canada as a convenient reference only, and is not to be relied upon as accurate. Prospective Buyers must satisfy themselves not only of the actual measurements, but also to the status of any finished space shown on this floor plan, specifically in relation to minimum ceiling height for habitable rooms required by the BC Building Code, allowable finished floor area in relation to current zoning, and determination if space was developed with necessary municipal permits.