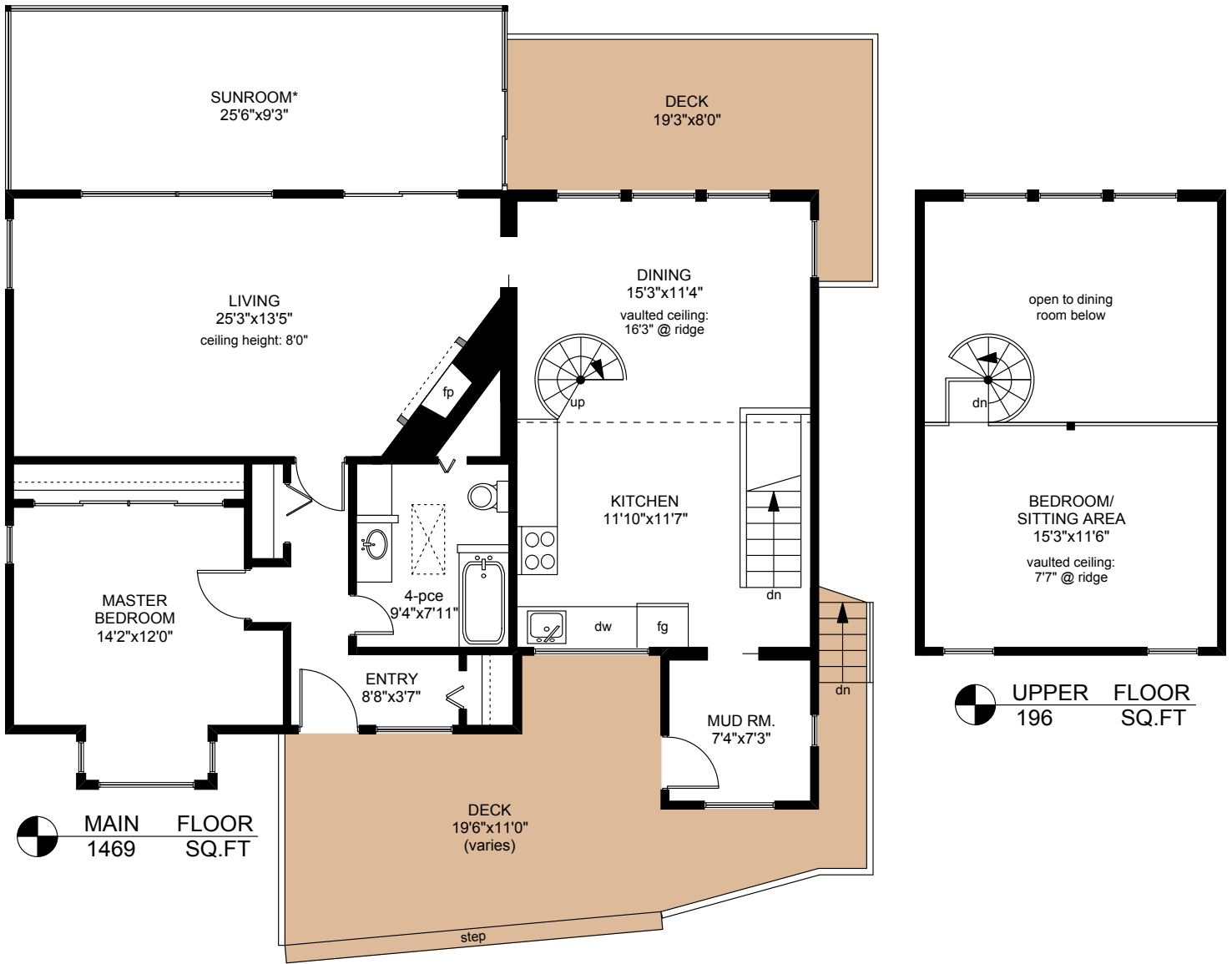



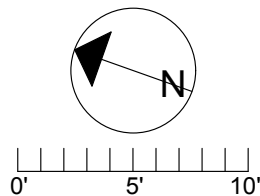
456 MT. BELCHER HEIGHTS




MAIN FLOOR
 1469 SQ.FT


UPPER FLOOR
 196 SQ.FT

	FINISHED SQ. FT.	UNFINISHED SQ. FT.	TOTAL SQ. FT.
MAIN	1220	249*	1469
UPPER	196	0	196
LOWER	1133	378	1511
TOTAL	2549	627	3176
CARPORT	0	274	274
DECKS	0	476	476
SHED	0	83	83



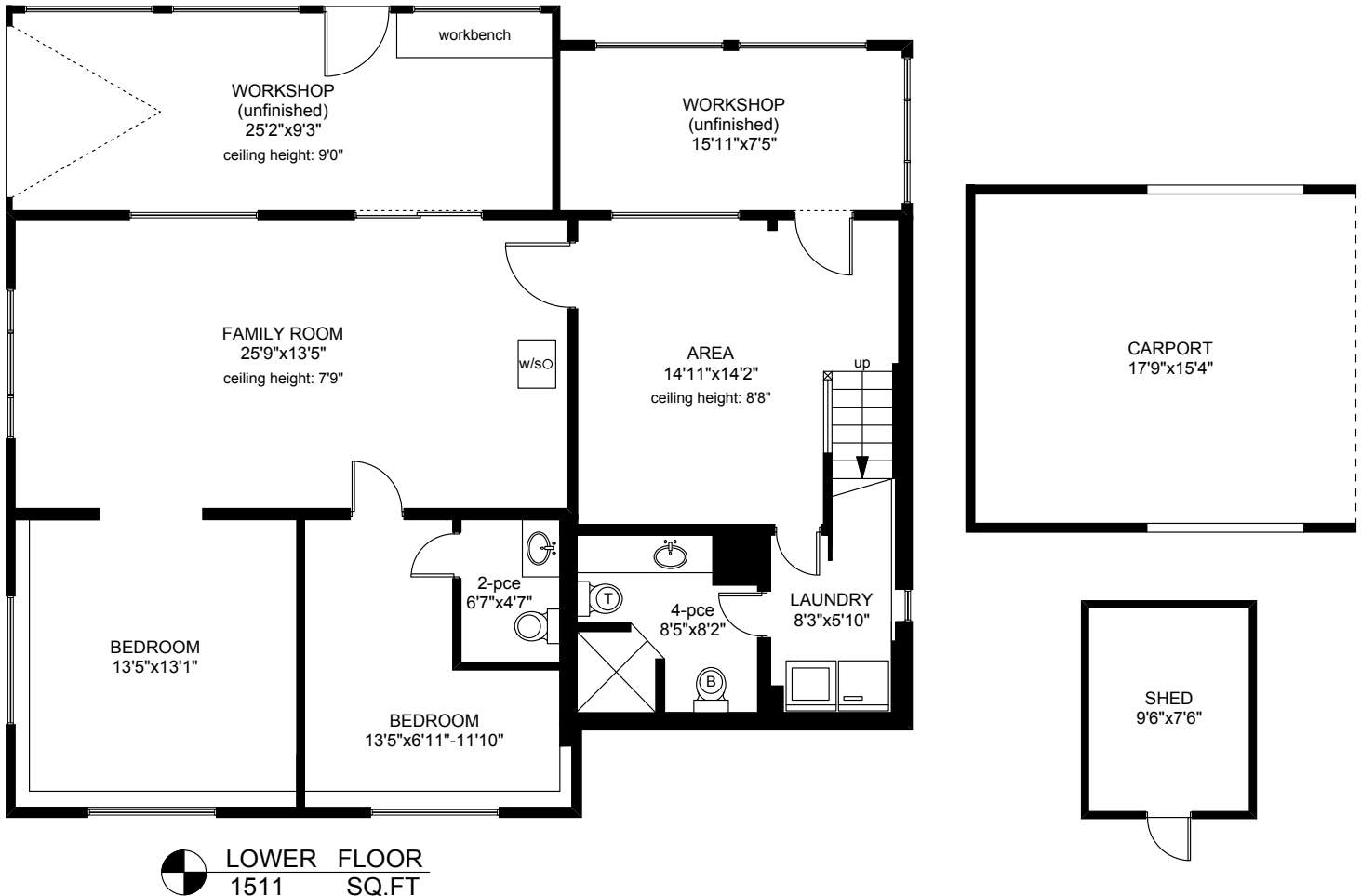
PREPARED FOR THE EXCLUSIVE USE OF
 CHRIS & DARLENE HOBBS OF
 SOTHEBY'S INTERNATIONAL REALTY CANADA

MEASURED ON: 05/17/17
 DRAWING FILE: 15085fm

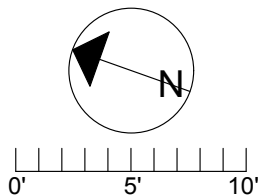
Tafe Measure VICTORIA, B.C.
 Ph. 883.8894
 www.tafemeasure.com

NOTE: This floor plan is provided by Chris & Darlene Hobbs of Sotheby's International Realty Canada as a convenient reference only, and is not to be relied upon as accurate. Prospective Buyers must satisfy themselves not only of the actual measurements, but also to the status of any finished space shown on this floor plan, specifically in relation to minimum ceiling height for habitable rooms required by the BC Building Code, allowable finished floor area in relation to current zoning, and determination if space was developed with necessary municipal permits.

456 MT. BELCHER HEIGHTS



	FINISHED SQ. FT.	UNFINISHED SQ. FT.	TOTAL SQ. FT.
MAIN	1220	249*	1469
UPPER	196	0	196
LOWER	1133	378	1511
TOTAL	2549	627	3176
CARPORT	0	274	274
DECKS	0	476	476
SHED	0	83	83



PREPARED FOR THE EXCLUSIVE USE OF
CHRIS & DARLENE HOBBS OF
SOTHEBY'S INTERNATIONAL REALTY CANADA

MEASURED ON: 05/17/17
DRAWING FILE: 15085fm

Tafmeasure VICTORIA, B.C.
Ph. 883.8894
www.tafemeasure.com

NOTE: This floor plan is provided by Chris & Darlene Hobbs of Sotheby's International Realty Canada as a convenient reference only, and is not to be relied upon as accurate. Prospective Buyers must satisfy themselves not only of the actual measurements, but also to the status of any finished space shown on this floor plan, specifically in relation to minimum ceiling height for habitable rooms required by the BC Building Code, allowable finished floor area in relation to current zoning, and determination if space was developed with necessary municipal permits.