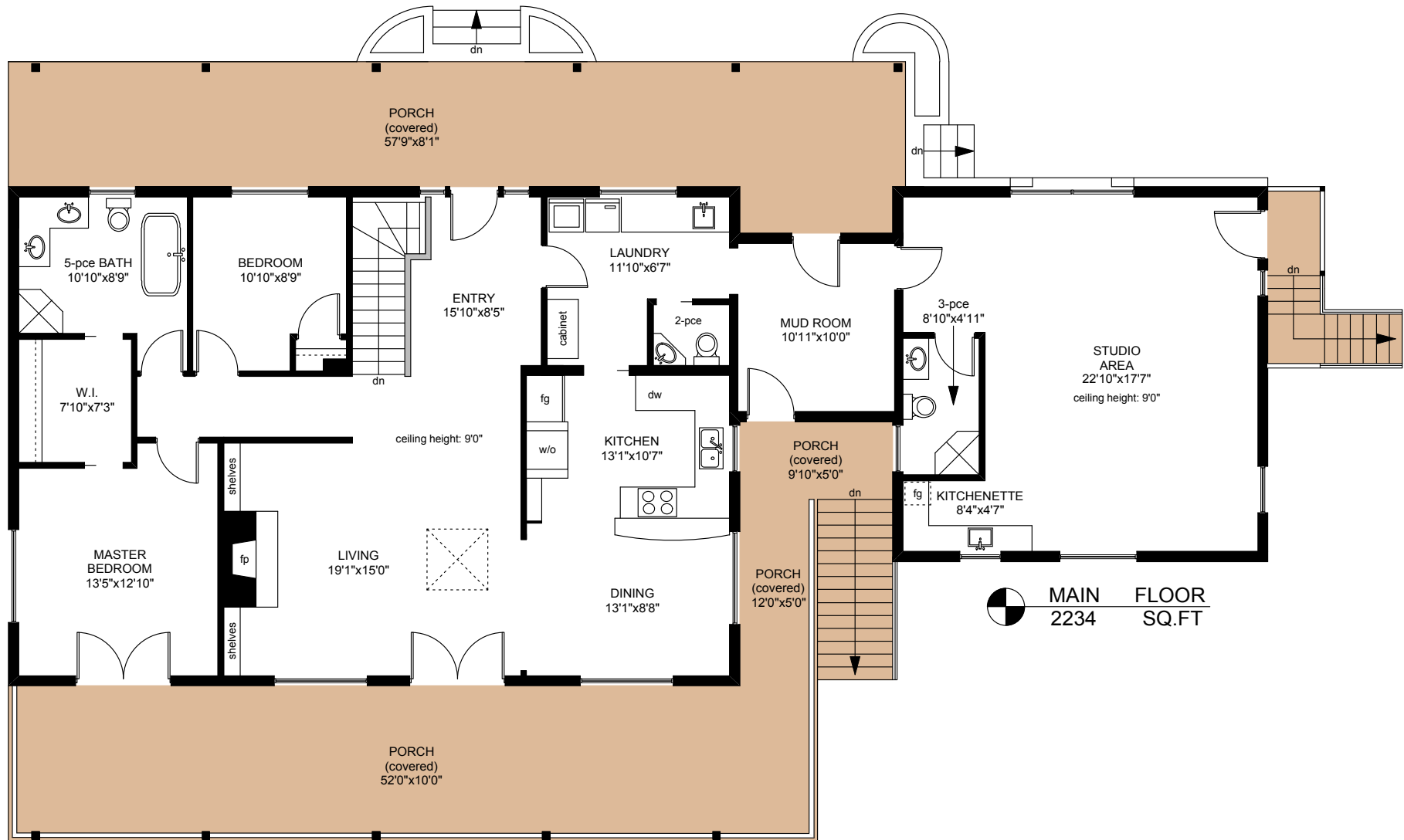

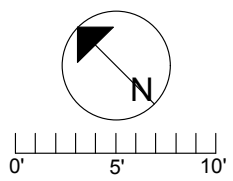


# 120 MANSELL ROAD




**MAIN FLOOR**  
 2234 SQ.FT

	FINISHED SQ. FT.	UNFINISHED SQ. FT.	TOTAL SQ. FT.
MAIN	2234	0	2234
LOWER	1654	0	1654
<b>TOTAL</b>	<b>3888</b>	<b>0</b>	<b>3888</b>
GARAGE	0	580	580
PORCHES	0	1133	1133
PATIO	0	776	776



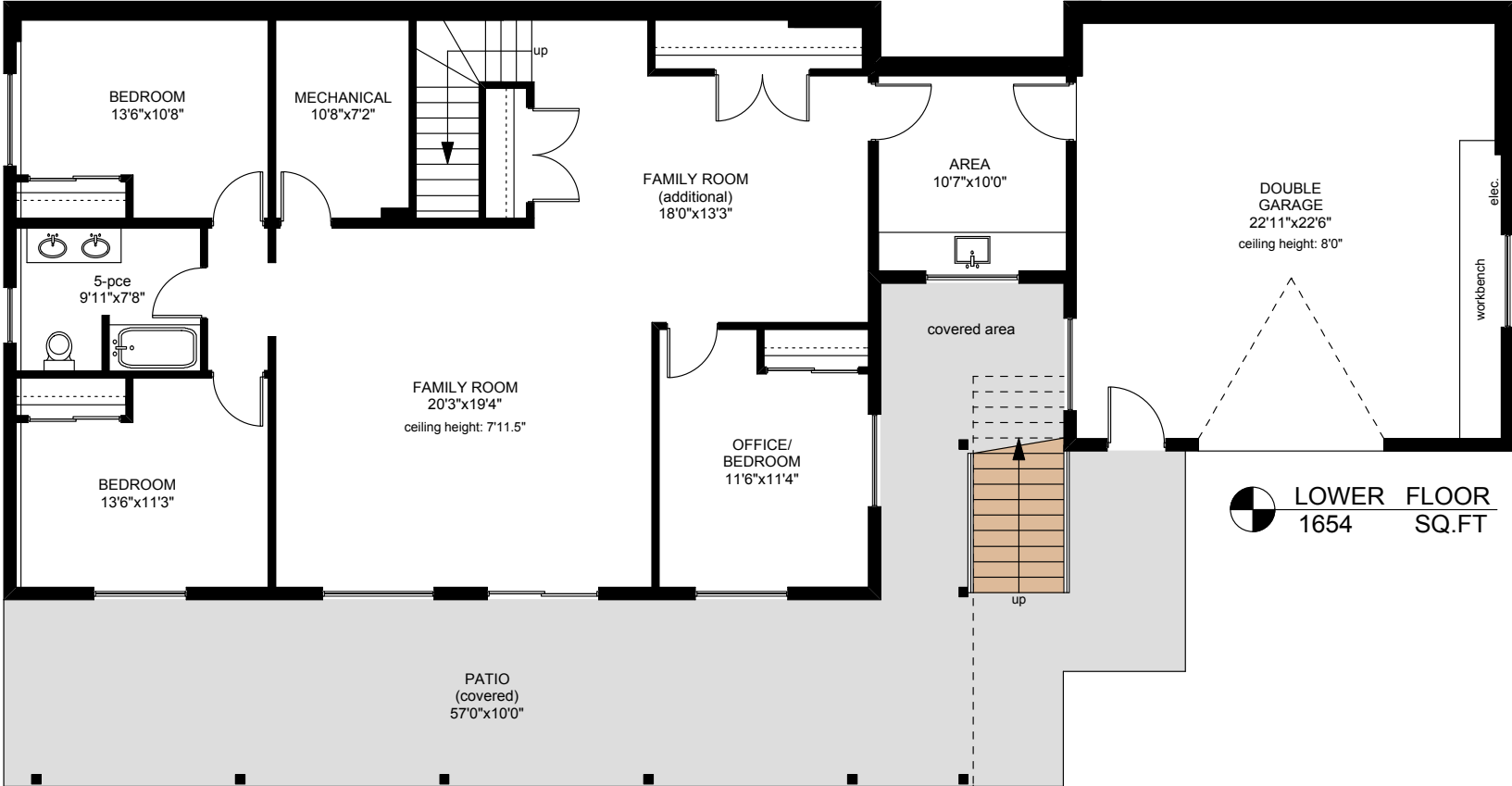
PREPARED FOR THE EXCLUSIVE USE OF  
 CHRIS & DARLENE HOBBS OF  
 SOTHEBY'S INTERNATIONAL REALTY CANADA

MEASURED ON: 02/16/17  
 DRAWING FILE: 13971fm

**Taf**measure VICTORIA, B.C.  
 Ph. 883.8894  
 www.tafmeasure.com

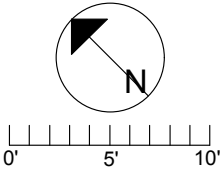
NOTE: This floor plan is provided by Chris & Darlene Hobbs of Sotheby's International Realty Canada as a convenient reference only, and is not to be relied upon as accurate. Prospective Buyers must satisfy themselves not only of the actual measurements, but also to the status of any finished space shown on this floor plan, specifically in relation to minimum ceiling height for habitable rooms required by the BC Building Code, allowable finished floor area in relation to current zoning, and determination if space was developed with necessary municipal permits.

# 120 MANSELL ROAD



LOWER FLOOR  
1654 SQ.FT

	FINISHED SQ. FT.	UNFINISHED SQ. FT.	TOTAL SQ. FT.
MAIN	2234	0	2234
LOWER	1654	0	1654
TOTAL	3888	0	3888
GARAGE	0	580	580
PORCHES	0	1133	1133
PATIO	0	776	776



PREPARED FOR THE EXCLUSIVE USE OF  
CHRIS & DARLENE HOBBS OF  
SOTHEBY'S INTERNATIONAL REALTY CANADA

MEASURED ON: 02/16/17  
DRAWING FILE: 13971fm

**Taf** Measure VICTORIA, B.C.  
Ph. 883.8894  
www.tafemeasure.com

NOTE: This floor plan is provided by Chris & Darlene Hobbs of Sotheby's International Realty Canada as a convenient reference only, and is not to be relied upon as accurate. Prospective Buyers must satisfy themselves not only of the actual measurements, but also to the status of any finished space shown on this floor plan, specifically in relation to minimum ceiling height for habitable rooms required by the BC Building Code, allowable finished floor area in relation to current zoning, and determination if space was developed with necessary municipal permits.