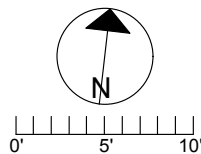
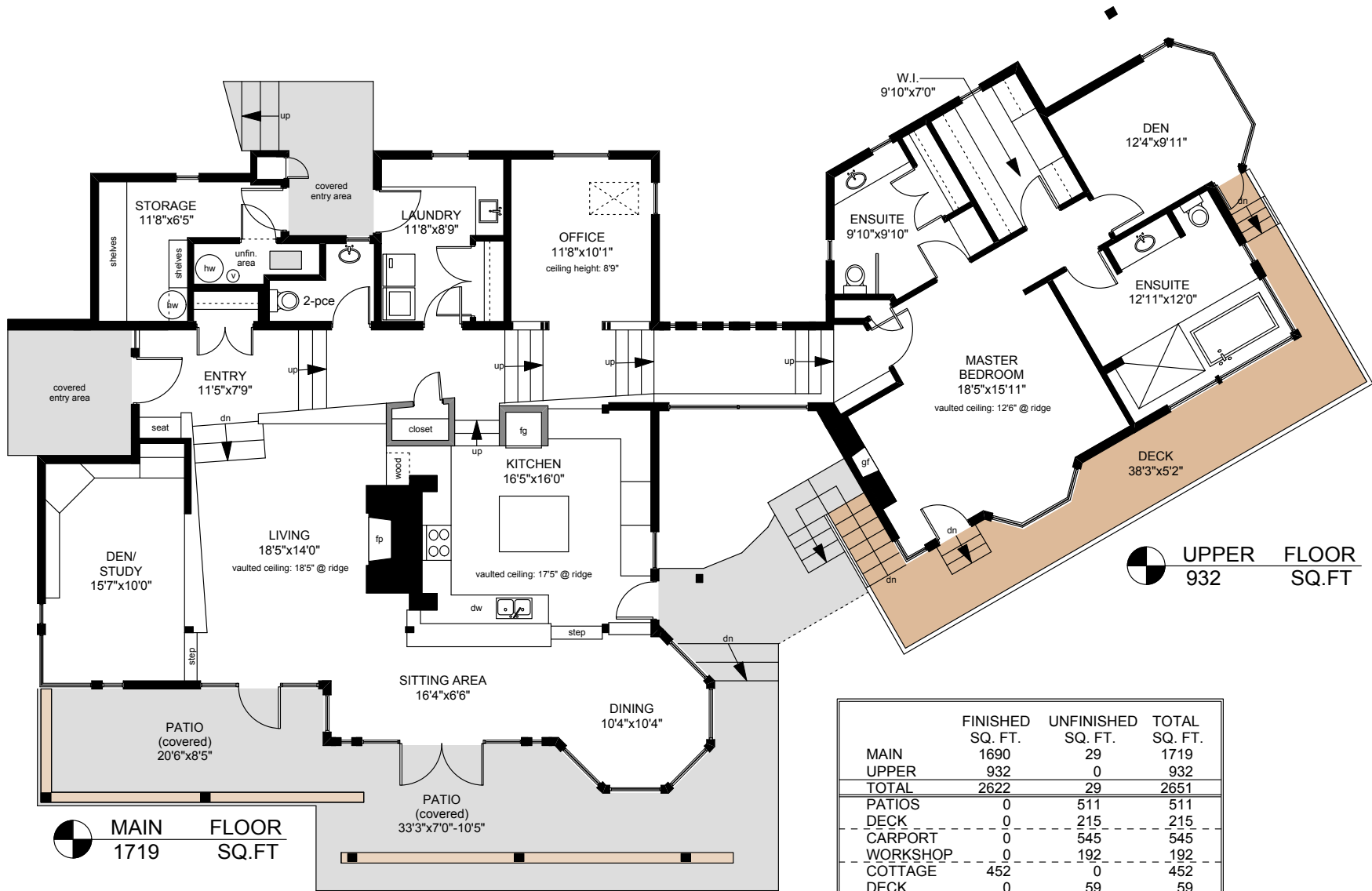


229 BAY RIDGE PLACE



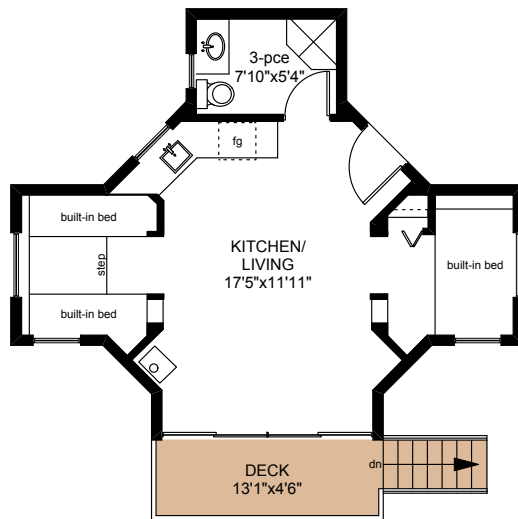
PREPARED FOR THE EXCLUSIVE USE OF
CHRIS & DARLENE HOBBS OF
SOTHEBY'S INTERNATIONAL REALTY CANADA

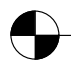
MEASURED ON: 10/31/16
DRAWING FILE: 13905fm

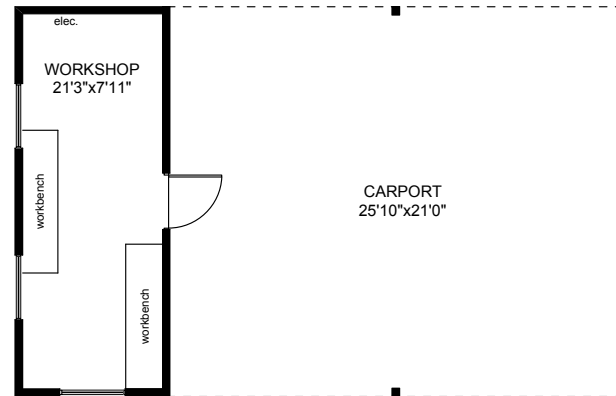
Tafmeasure VICTORIA, B.C.
Ph. 883.8894
www.tafmeasure.com

NOTE: This floor plan is provided by Chris & Darlene Hobbs of Sotheby's International Realty Canada as a convenient reference only, and is not to be relied upon as accurate. Prospective Buyers must satisfy themselves not only of the actual measurements, but also to the status of any finished space shown on this floor plan, specifically in relation to minimum ceiling height for habitable rooms required by the BC Building Code, allowable finished floor area in relation to current zoning, and determination if space was developed with necessary municipal permits.

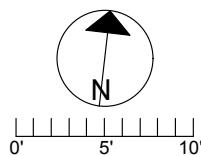
229 BAY RIDGE PLACE



 COTTAGE
452 SQ.FT



	FINISHED SQ. FT.	UNFINISHED SQ. FT.	TOTAL SQ. FT.
MAIN	1690	29	1719
UPPER	932	0	932
TOTAL	2622	29	2651
PATIOS	0	511	511
DECK	0	215	215
CARPORT	0	545	545
WORKSHOP	0	192	192
COTTAGE	452	0	452
DECK	0	59	59



PREPARED FOR THE EXCLUSIVE USE OF
CHRIS & DARLENE HOBBS OF
SOTHEBY'S INTERNATIONAL REALTY CANADA

MEASURED ON: 10/31/16
DRAWING FILE: 13905fm

Tafmeasure VICTORIA, B.C.
Ph. 883.8894
www.tafemeasure.com

NOTE: This floor plan is provided by Chris & Darlene Hobbs of Sotheby's International Realty Canada as a convenient reference only, and is not to be relied upon as accurate. Prospective Buyers must satisfy themselves not only of the actual measurements, but also to the status of any finished space shown on this floor plan, specifically in relation to minimum ceiling height for habitable rooms required by the BC Building Code, allowable finished floor area in relation to current zoning, and determination if space was developed with necessary municipal permits.