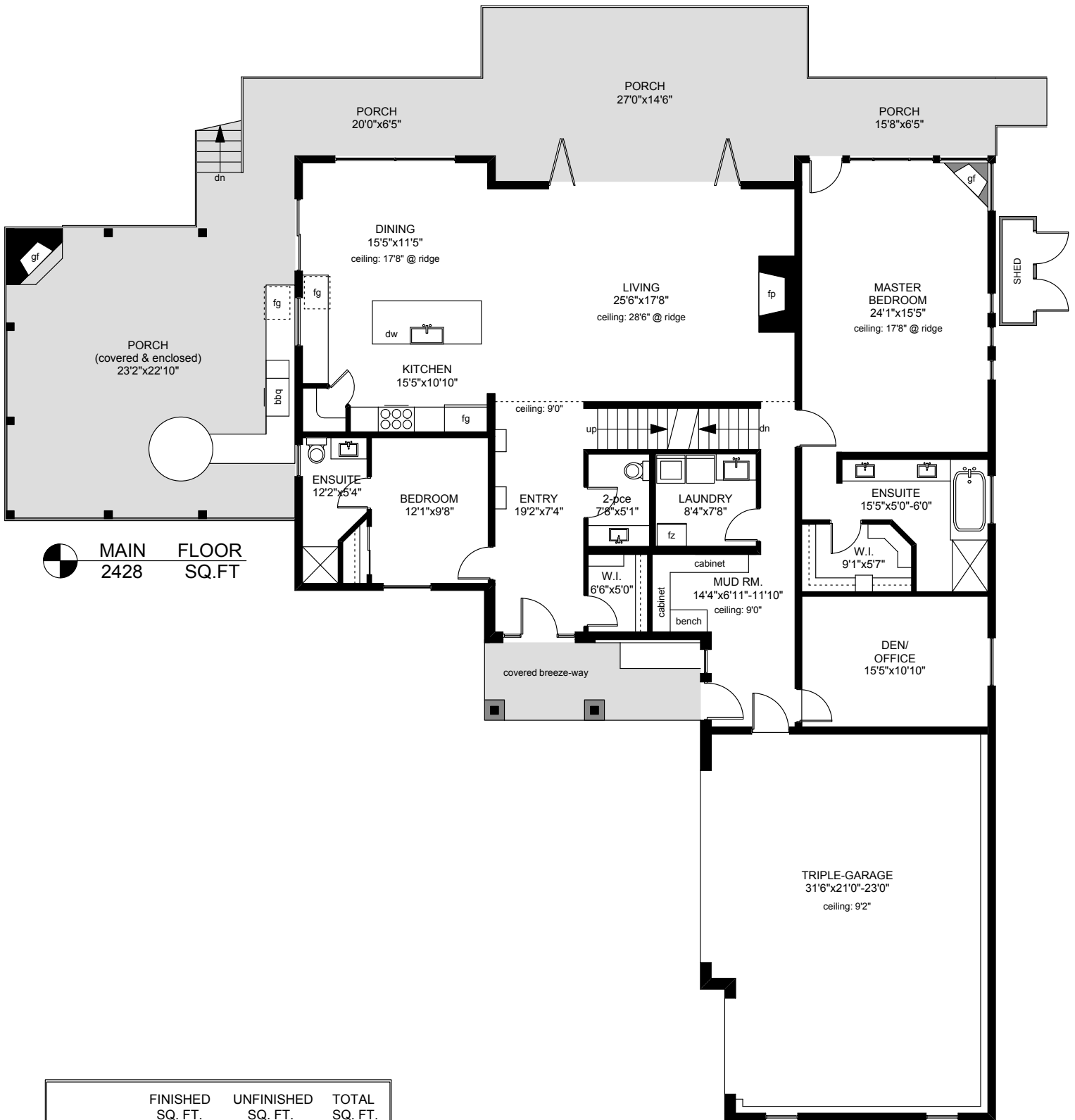

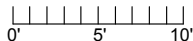
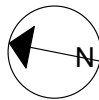


133 ALDERS ROAD




MAIN FLOOR
2428 SQ.FT

	FINISHED SQ. FT.	UNFINISHED SQ. FT.	TOTAL SQ. FT.
MAIN	2428	0	2428
UPPER	1474	0	1474
LOWER	2428	0	2428
TOTAL	6330	0	6330
GARAGE	0	768	768
GARAGE 2	0	581	581
PORCHES	0	1266	1266
PATIOS	0	670	670



PREPARED FOR THE EXCLUSIVE USE OF
 CHRIS & DARLENE HOBBS OF
 SOTHEBY'S INTERNATIONAL REALTY CANADA

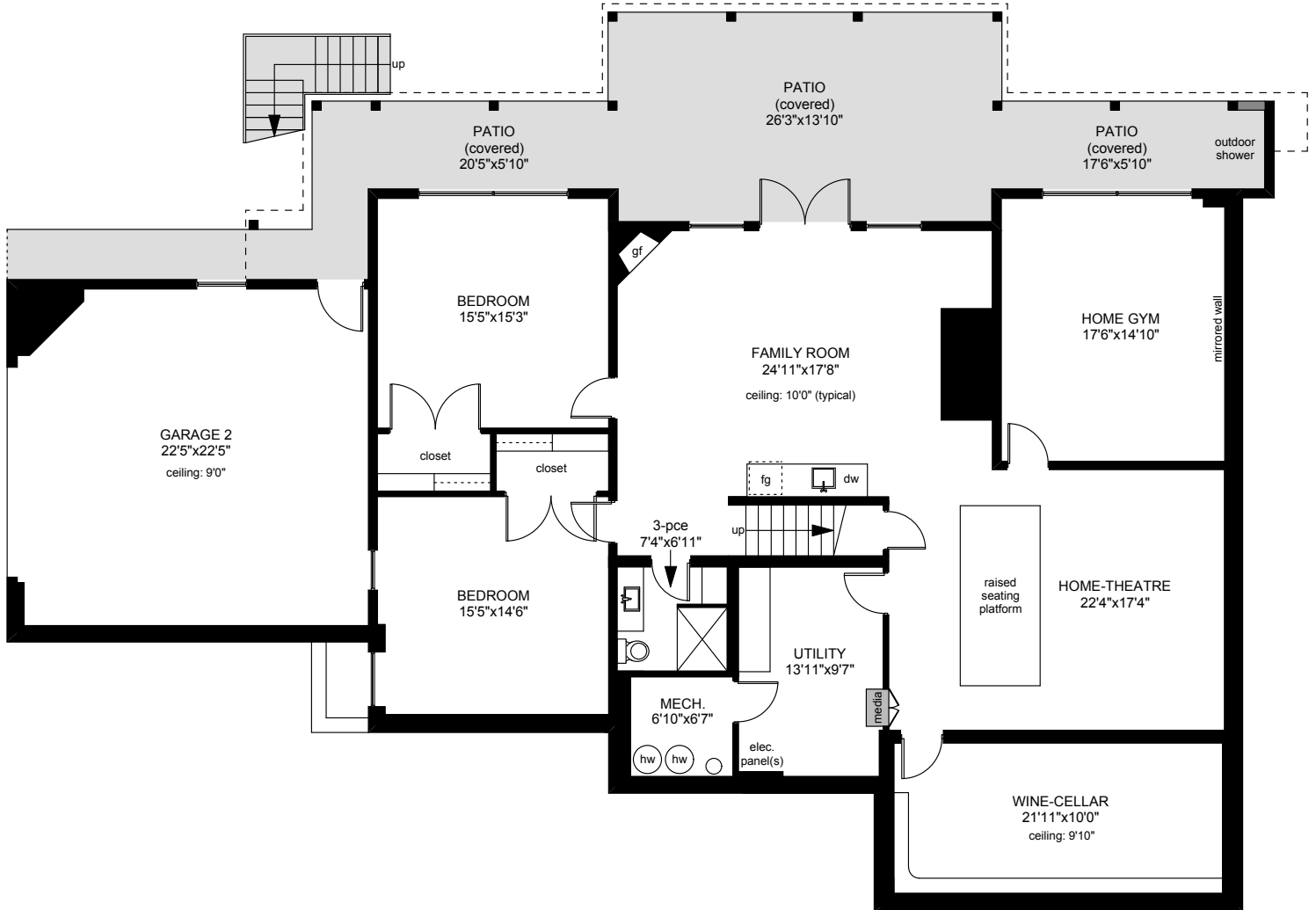
MEASURED ON: 06/21/16
 DRAWING FILE: 13782fm

Tafe Measure VICTORIA, B.C.
 Ph. 883.8894
 www.tafemeasure.com

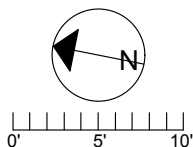
NOTE: This floor plan is provided by Chris & Darlene Hobbs of Sotheby's International Realty Canada as a convenient reference only, and is not to be relied upon as accurate. Prospective Buyers must satisfy themselves not only of the actual measurements, but also to the status of any finished space shown on this floor plan, specifically in relation to minimum ceiling height for habitable rooms required by the BC Building Code, allowable finished floor area in relation to current zoning, and determination if space was developed with necessary municipal permits.

133 ALDERS ROAD

LOWER FLOOR
2428 SQ.FT



	FINISHED SQ. FT.	UNFINISHED SQ. FT.	TOTAL SQ. FT.
MAIN	2428	0	2428
UPPER	1474	0	1474
LOWER	2428	0	2428
TOTAL	6330	0	6330
GARAGE	0	768	768
GARAGE 2	0	581	581
PORCHES	0	1266	1266
PATIOS	0	670	670



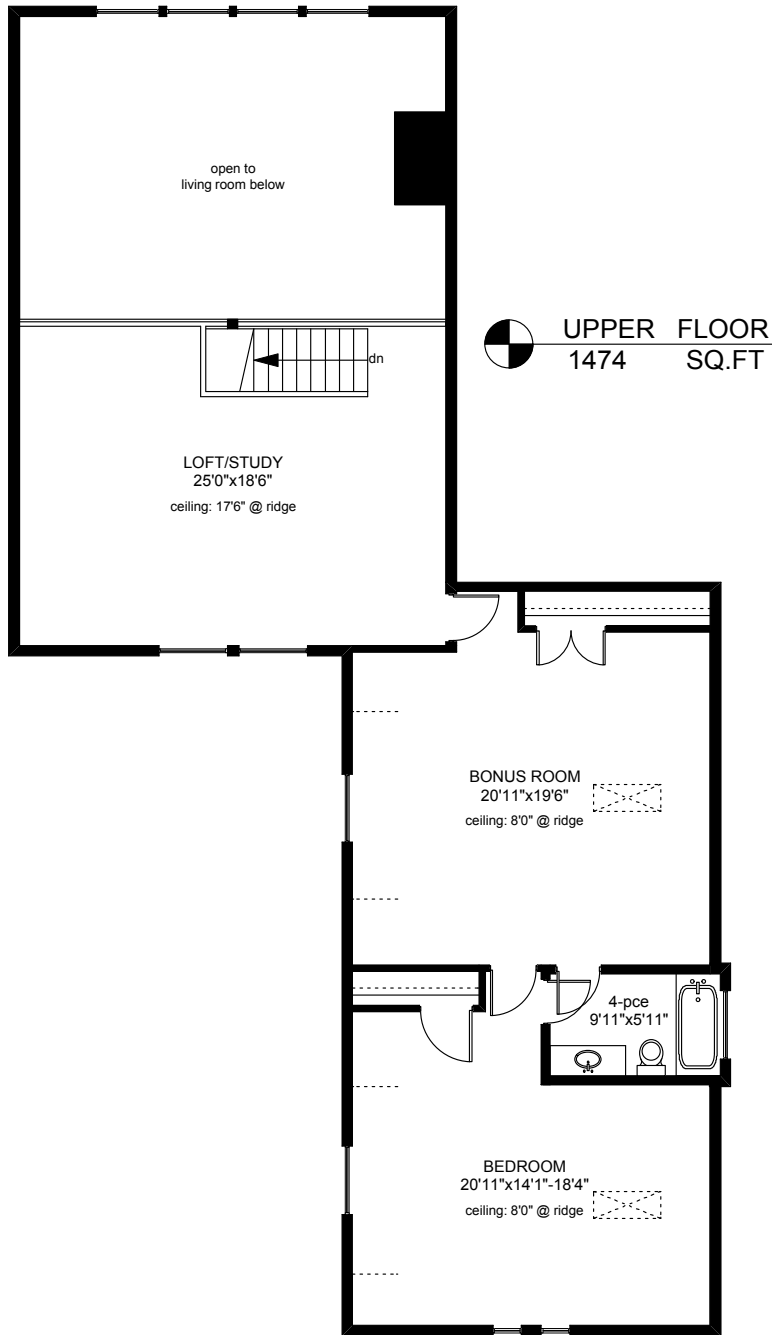
PREPARED FOR THE EXCLUSIVE USE OF
CHRIS & DARLENE HOBBS OF
SOTHEBY'S INTERNATIONAL REALTY CANADA

MEASURED ON: 06/21/16
DRAWING FILE: 13782fm

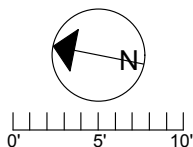
Tafe Measure VICTORIA, B.C.
Ph. 883.8894
www.tafemeasure.com

NOTE: This floor plan is provided by Chris & Darlene Hobbs of Sotheby's International Realty Canada as a convenient reference only, and is not to be relied upon as accurate. Prospective Buyers must satisfy themselves not only of the actual measurements, but also to the status of any finished space shown on this floor plan, specifically in relation to minimum ceiling height for habitable rooms required by the BC Building Code, allowable finished floor area in relation to current zoning, and determination if space was developed with necessary municipal permits.

133 ALDERS ROAD



	FINISHED SQ. FT.	UNFINISHED SQ. FT.	TOTAL SQ. FT.
MAIN	2428	0	2428
UPPER	1474	0	1474
LOWER	2428	0	2428
TOTAL	6330	0	6330
GARAGE	0	768	768
GARAGE 2	0	581	581
PORCHES	0	1266	1266
PATIOS	0	670	670



PREPARED FOR THE EXCLUSIVE USE OF
CHRIS & DARLENE HOBBS OF
SOTHEBY'S INTERNATIONAL REALTY CANADA

MEASURED ON: 06/21/16
DRAWING FILE: 13782fm

Tafe Measure VICTORIA, B.C.
Ph. 883.8894
www.tafemeasure.com

NOTE: This floor plan is provided by Chris & Darlene Hobbs of Sotheby's International Realty Canada as a convenient reference only, and is not to be relied upon as accurate. Prospective Buyers must satisfy themselves not only of the actual measurements, but also to the status of any finished space shown on this floor plan, specifically in relation to minimum ceiling height for habitable rooms required by the BC Building Code, allowable finished floor area in relation to current zoning, and determination if space was developed with necessary municipal permits.