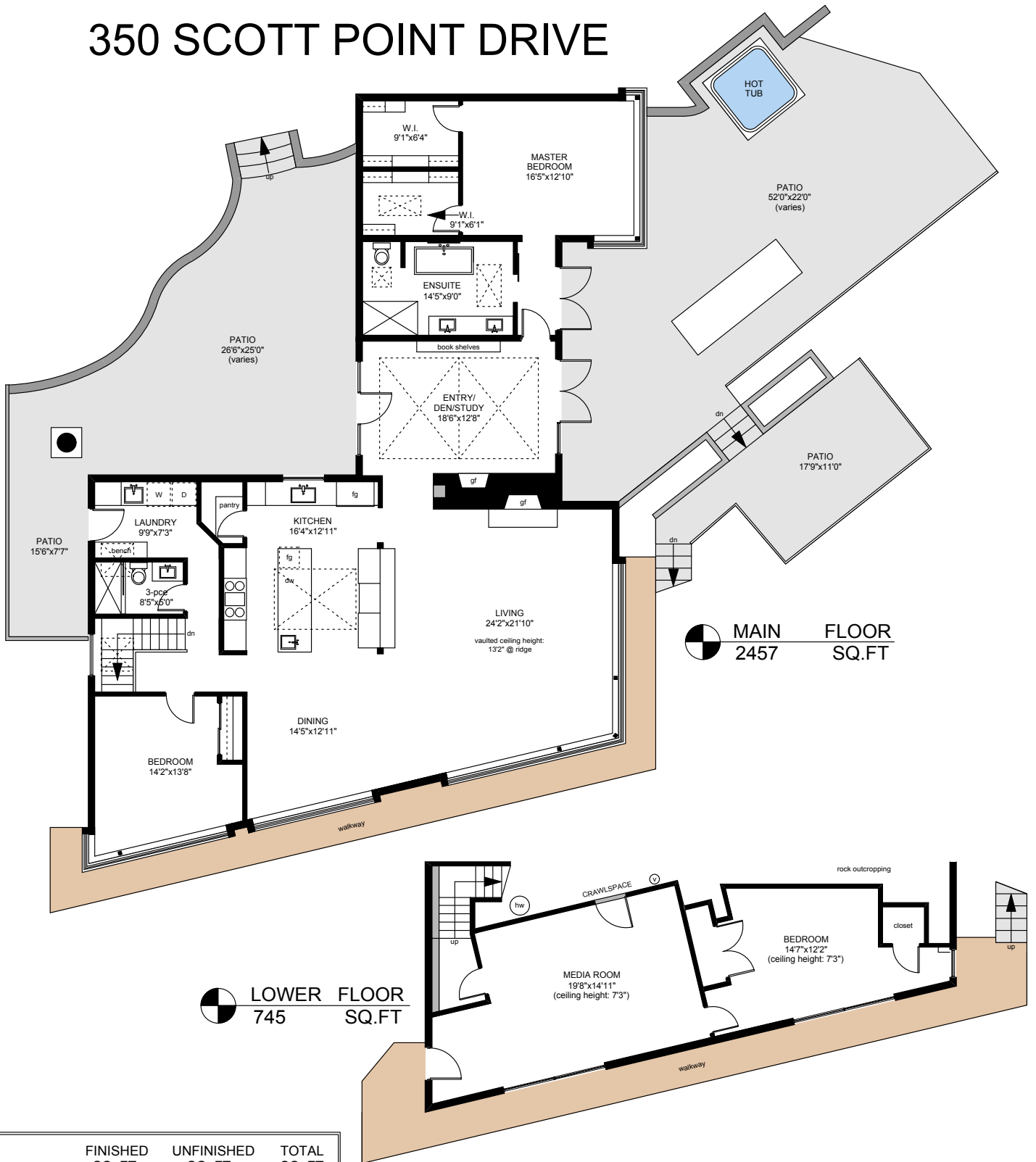
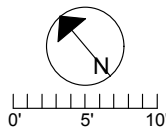


350 SCOTT POINT DRIVE



	FINISHED SQ. FT.	UNFINISHED SQ. FT.	TOTAL SQ. FT.
MAIN	2457	0	2457
LOWER	745	0	745
TOTAL	3202	0	3202
GARAGE	0	726	726
DECKS	0	550	550
PATIOS	0	2023	2023
MAIN	0	592	592
UPPER	0	391	391
TOTAL	0	983	983
DECKS	0	264	264



PREPARED FOR THE EXCLUSIVE USE OF
CHRIS & DARLENE HOBBS OF
SOTHEY'S INTERNATIONAL REALTY CANADA

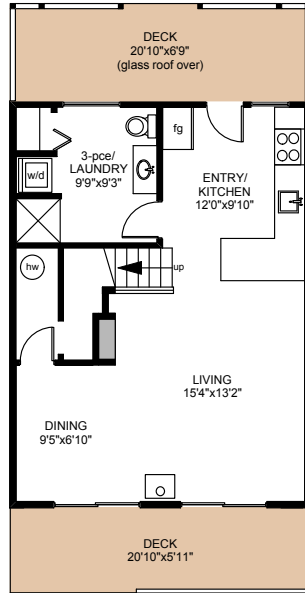
MEASURED ON: 01/26/12
09/11/14
DRAWING FILE: 12201

Tafe Measure VICTORIA, B.C.
Ph. 883.8894
www.tafemeasure.com

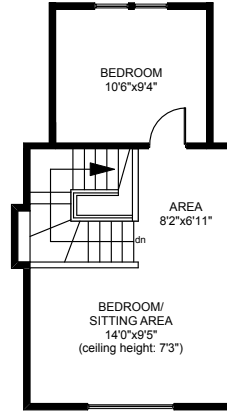
NOTE: This floor plan is provided by Chris & Darlene Hobbs of Sotheby's International Realty Canada as a convenient reference only, and is not to be relied upon as accurate. Prospective Buyers must satisfy themselves not only of the actual measurements, but also to the status of any finished space shown on this floor plan, specifically in relation to minimum ceiling height for habitable rooms required by the BC Building Code, allowable finished floor area in relation to current zoning, and determination if space was developed with necessary municipal permits.

350 SCOTT POINT DRIVE

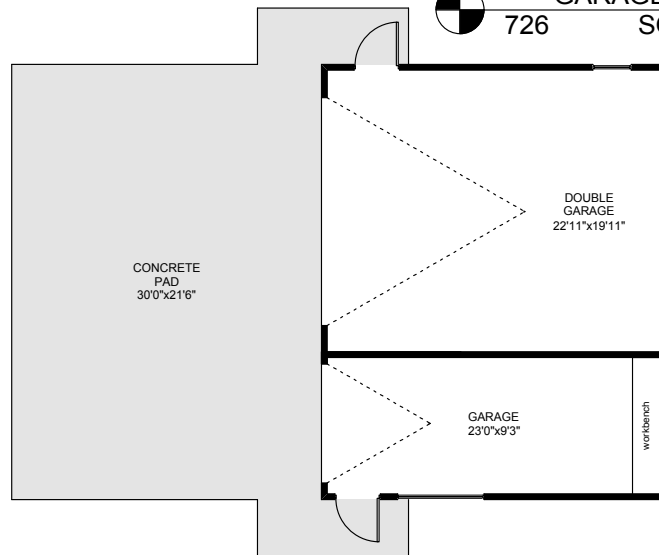
MAIN FLOOR
592 SQ.FT



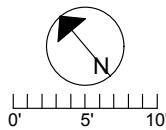
UPPER FLOOR
391 SQ.FT



GARAGE
726 SQ.FT



	FINISHED SQ. FT.	UNFINISHED SQ. FT.	TOTAL SQ. FT.
MAIN	2457	0	2457
LOWER	745	0	745
TOTAL	3202	0	3202
GARAGE	0	726	726
DECKS	0	550	550
PATIOS	0	2023	2023
MAIN	0	592	592
UPPER	0	391	391
TOTAL	0	983	983
DECKS	0	264	264



PREPARED FOR THE EXCLUSIVE USE OF
CHRIS & DARLENE HOBBS OF
SOTHEBY'S INTERNATIONAL REALTY CANADA

MEASURED ON: 01/26/12
09/11/14
DRAWING FILE: 12201

Tafe Measure VICTORIA, B.C.
Ph. 883.8894
www.tafemeasure.com

NOTE: This floor plan is provided by Chris & Darlene Hobbs of Sotheby's International Realty Canada as a convenient reference only, and is not to be relied upon as accurate. Prospective Buyers must satisfy themselves not only of the actual measurements, but also to the status of any finished space shown on this floor plan, specifically in relation to minimum ceiling height for habitable rooms required by the BC Building Code, allowable finished floor area in relation to current zoning, and determination if space was developed with necessary municipal permits.