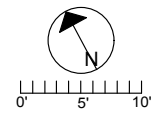
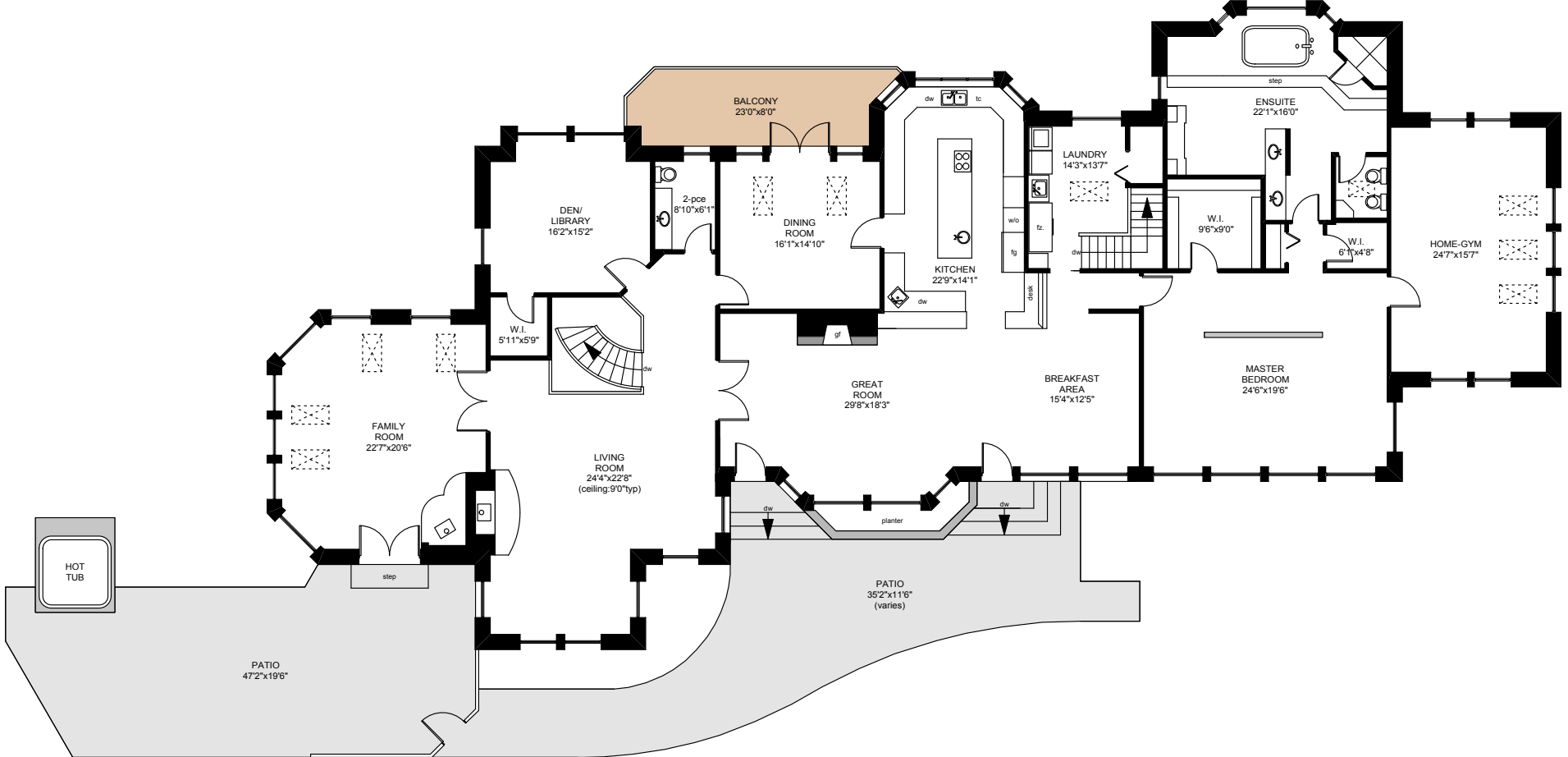


521 LONG HARBOUR ROAD

MAIN FLOOR
5021 SQ.FT



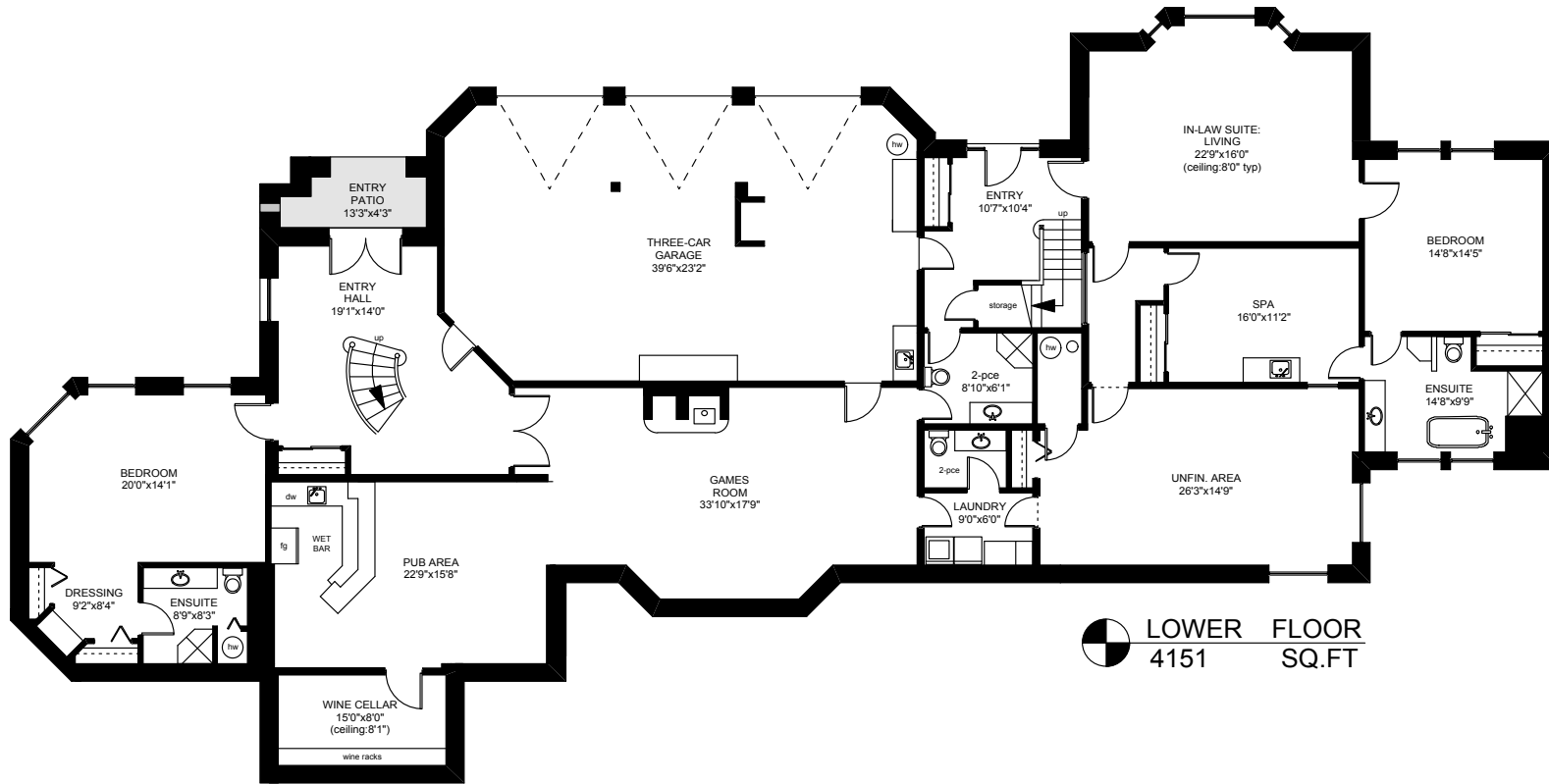
	FINISHED SQ. FT.	UNFINISHED SQ. FT.	TOTAL SQ. FT.
MAIN	5021	0	5021
LOWER	3705	446	4151
TOTAL	8726	446	9172
GARAGE	0	996	996
PATIOS	0	1601	1601
BALCONY	0	196	196

PREPARED FOR THE EXCLUSIVE USE OF
CHRIS & DARLENE HOBBS OF
SOTHEBY'S INTERNATIONAL REALTY CANADA

MEASURED ON: 07/21/11
DRAWING FILE: 09567

Tafe Measure VICTORIA, B.C.
Ph. 883.8894
www.tafemeasure.com

521 LONG HARBOUR ROAD



LOWER FLOOR
4151 SQ.FT

	FINISHED SQ. FT.	UNFINISHED SQ. FT.	TOTAL SQ. FT.
MAIN	5021	0	5021
LOWER	3705	446	4151
TOTAL	8726	446	9172
GARAGE	0	996	996
PATIOS	0	1601	1601
BALCONY	0	196	196

PREPARED FOR THE EXCLUSIVE USE OF
CHRIS & DARLENE HOBBS OF
SOTHEBY'S INTERNATIONAL REALTY CANADA

MEASURED ON: 07/21/11
DRAWING FILE: 09567

Tafe Measure VICTORIA, B.C.
Ph. 883.8894
www.tafemeasure.com