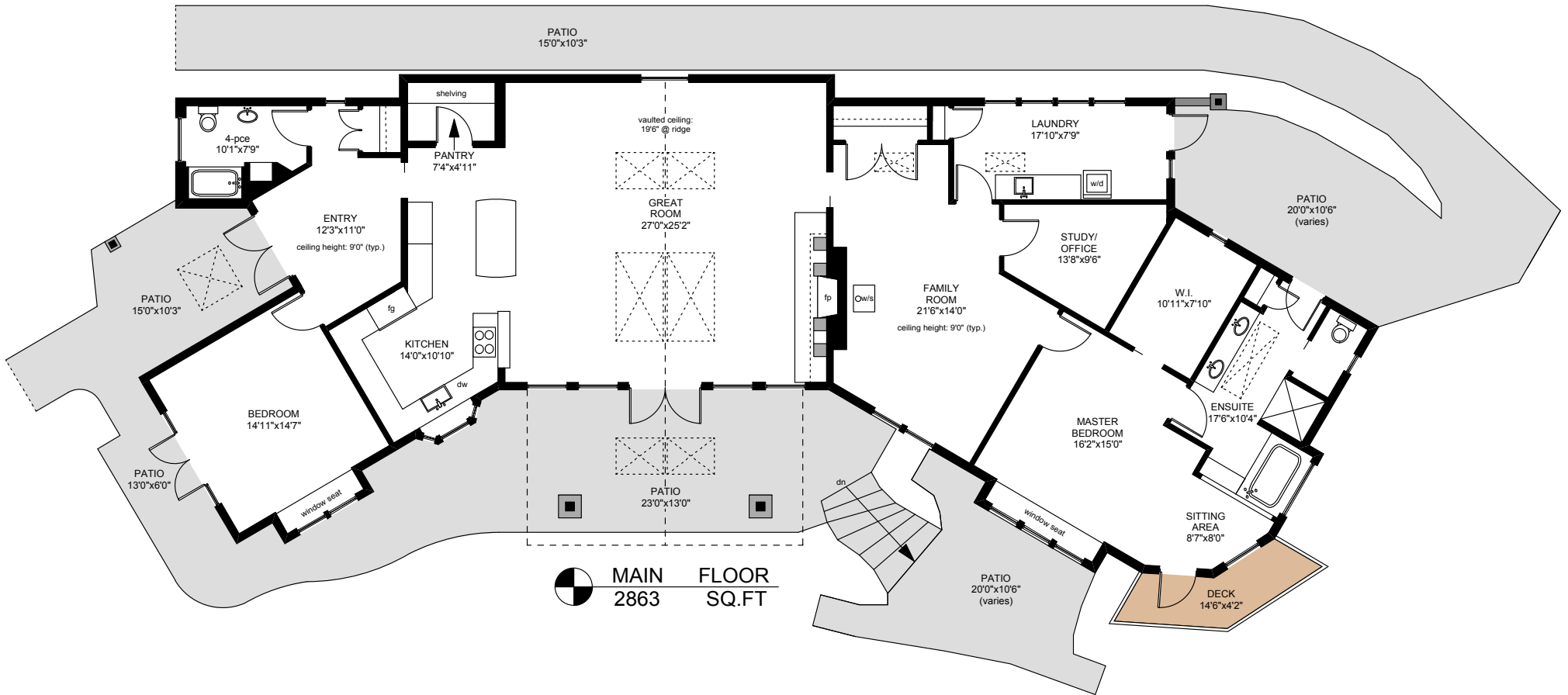
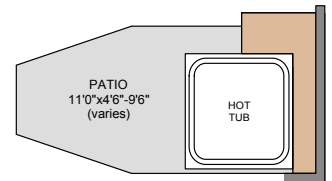
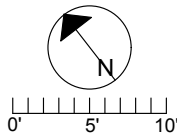


711 MANSELL ROAD



MAIN FLOOR
2863 SQ.FT

	FINISHED SQ. FT.	UNFINISHED SQ. FT.	TOTAL SQ. FT.
MAIN	2863	0	2863
BASEMENT	0	987	987
TOTAL	2863	987	3850
PATIOS	0	1364	1364
DECK	0	65	65
STUDIO:			
MAIN	694	0	694
LOFT	118	0	118
TOTAL	812	0	812
GARAGE	0	722	722
DECK	0	167	167
WOOD STOR.	0	227	227



PREPARED FOR THE EXCLUSIVE USE OF
CHRIS & DARLENE HOBBS OF
SOTHEY'S INTERNATIONAL REALTY CANADA

MEASURED ON: 05/24/13
DRAWING FILE: 11179

Tafmeasure VICTORIA, B.C.
Ph. 883.8894
www.tafemeasure.com

NOTE: This floor plan is provided by Chris & Darlene Hobbs of Sotheby's International Realty Canada as a convenient reference only, and is not to be relied upon as accurate. Prospective Buyers must satisfy themselves not only of the actual measurements, but also to the status of any finished space shown on this floor plan, specifically in relation to minimum ceiling height for habitable rooms required by the BC Building Code, allowable finished floor area in relation to current zoning, and determination if space was developed with necessary municipal permits.